

Recombinant Human Bim protein ab112387

[1 References](#) [画像数 1](#)

製品の詳細

製品名	Recombinant Human Bim protein
発現系	Wheat germ
アクセッション番号	<u>O43521</u>
タンパク質長	Full length protein
Animal free	No
由来	Recombinant
生物種	Human
配列	MAKQPSDVSSECDREGRQLQPAERPPQLRPGAPTSLQTEPQD RSPAPMSC DKSTQTPSPPCQAFNHYLSAMVVILEDIGDLSLFCFGFIFTGL DLYGHHHS QDTEQLNHHKDFS
予測される分子量	39 kDa including tags
領域	1 to 112
タグ	GST tag N-Terminus

特性

Our **Abpromise guarantee** covers the use of **ab112387** in the following tested applications.

The application notes include recommended starting dilutions; optimal dilutions/concentrations should be determined by the end user.

アプリケーション	SDS-PAGE ELISA Western blot
製品の状態	Liquid

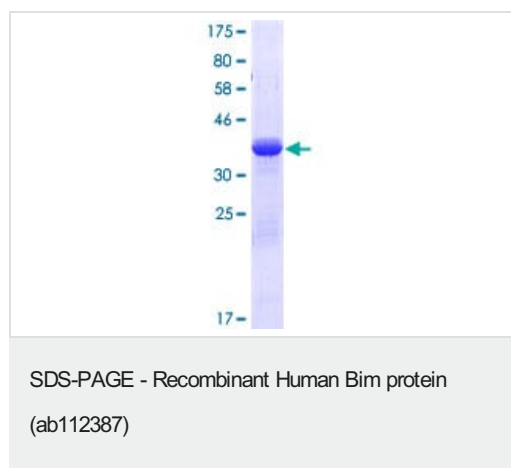
前処理および保存

保存方法および安定性	Shipped on dry ice. Upon delivery aliquot and store at -80°C. Avoid freeze / thaw cycles. pH: 8.00 Constituents: 0.31% Glutathione, 0.79% Tris HCl Glutathione is reduced
------------	--

関連情報

機能	Induces apoptosis. Isoform BimL is more potent than isoform BimEL. Isoform Bim-alpha1, isoform Bim-alpha2 and isoform Bim-alpha3 induce apoptosis, although less potent than the isoforms BimEL, BimL and BimS. Isoform Bim-gamma induces apoptosis.
組織特異性	Isoform BimEL, isoform BimL and isoform BimS are the predominant isoforms and are ubiquitously expressed with a tissue-specific variation. Isoform Bim-gamma is most abundantly expressed in small intestine and colon, and in lower levels in spleen, prostate, testis, heart, liver and kidney.
配列類似性	Belongs to the Bcl-2 family.
ドメイン	The BH3 motif is required for Bcl-2 binding and cytotoxicity.
細胞内局在	Mitochondrion and Endomembrane system. Associated with intracytoplasmic membranes.

画像



12.5% SDS-PAGE analysis of ab112387. Stained with Coomassie Blue

Please note: All products are "FOR RESEARCH USE ONLY. NOT FOR USE IN DIAGNOSTIC PROCEDURES"

Our Abpromise to you: Quality guaranteed and expert technical support

- Replacement or refund for products not performing as stated on the datasheet
- Valid for 12 months from date of delivery
- Response to your inquiry within 24 hours

- We provide support in Chinese, English, French, German, Japanese and Spanish
- Extensive multi-media technical resources to help you
- We investigate all quality concerns to ensure our products perform to the highest standards

If the product does not perform as described on this datasheet, we will offer a refund or replacement. For full details of the Abpromise, please visit <https://www.abcam.co.jp/abpromise> or contact our technical team.

Terms and conditions

-
- Guarantee only valid for products bought direct from Abcam or one of our authorized distributors