

# Recombinant Human beta Tubulin protein ab70187

3 References 画像数 2

### 製品の詳細

製品名	Recombinant Human beta Tubulin protein
精製度	> 70 % Densitometry. Purity is lot specific. Please contact our technical Support team for details.
発現系	Escherichia coli
アクセッション番号	<b>P07437</b>
タンパク質長	Full length protein
Animal free	No
由来	Recombinant
生物種	Human
予測される分子量	76 kDa including tags
領域	1 to 444
タグ	GST tag N-Terminus

### 特性

Our **Abpromise guarantee** covers the use of **ab70187** in the following tested applications.

The application notes include recommended starting dilutions; optimal dilutions/concentrations should be determined by the end user.

アプリケーション	Western blot
	SDS-PAGE
製品の状態	Liquid

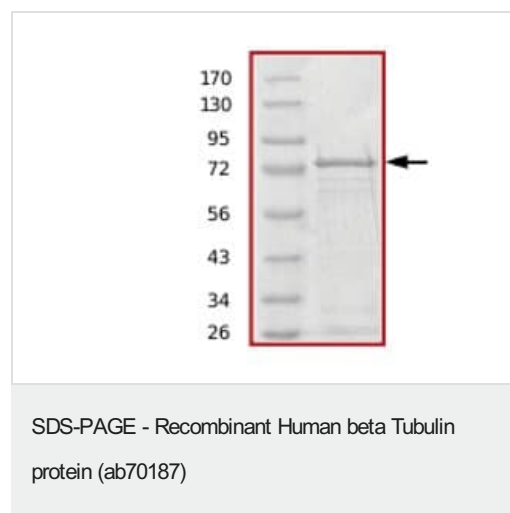
### 前処理および保存

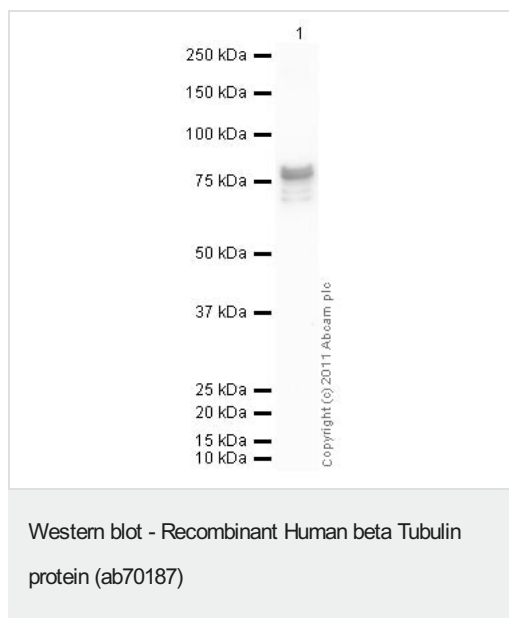
保存方法および安定性	Shipped on dry ice. Upon delivery aliquot and store at -80°C. Avoid freeze / thaw cycles. pH: 7.50 Constituents: 0.002% PMSF, 0.004% DTT, 0.79% Tris HCl, 25% Glycerol (glycerin, glycerine), 0.88% Sodium chloride, 0.31% Glutathione, 0.003% EDTA
------------	---

### 関連情報

機能	Tubulin is the major constituent of microtubules. It binds two moles of GTP, one at an exchangeable site on the beta chain and one at a non-exchangeable site on the alpha chain.
組織特異性	Ubiquitously expressed with highest levels in spleen, thymus and immature brain.
関連疾患	Cortical dysplasia, complex, with other brain malformations 6 Skin creases, congenital symmetric circumferential, 1
配列類似性	Belongs to the tubulin family.
ドメイン	The highly acidic C-terminal region may bind cations such as calcium.
翻訳後修飾	<p>Some glutamate residues at the C-terminus are polyglutamylated, resulting in polyglutamate chains on the gamma-carboxyl group (PubMed:26875866). Polyglutamylation plays a key role in microtubule severing by spastin (SPAST). SPAST preferentially recognizes and acts on microtubules decorated with short polyglutamate tails: severing activity by SPAST increases as the number of glutamates per tubulin rises from one to eight, but decreases beyond this glutamylation threshold (PubMed:26875866).</p> <p>Some glutamate residues at the C-terminus are monoglycylated but not polyglycylated due to the absence of functional TTLL10 in human. Monoglycylation is mainly limited to tubulin incorporated into axonemes (cilia and flagella). Both polyglutamylation and monoglycylation can coexist on the same protein on adjacent residues, and lowering glycylation levels increases polyglutamylation, and reciprocally. The precise function of monoglycylation is still unclear.</p> <p>Phosphorylated on Ser-172 by CDK1 during the cell cycle, from metaphase to telophase, but not in interphase. This phosphorylation inhibits tubulin incorporation into microtubules.</p>
細胞内局在	Cytoplasm, cytoskeleton.

## 画像





**Please note:** All products are "FOR RESEARCH USE ONLY. NOT FOR USE IN DIAGNOSTIC PROCEDURES"

### Our Abpromise to you: Quality guaranteed and expert technical support

---

- Replacement or refund for products not performing as stated on the datasheet
- Valid for 12 months from date of delivery
- Response to your inquiry within 24 hours
- We provide support in Chinese, English, French, German, Japanese and Spanish
- Extensive multi-media technical resources to help you
- We investigate all quality concerns to ensure our products perform to the highest standards

If the product does not perform as described on this datasheet, we will offer a refund or replacement. For full details of the Abpromise, please visit <https://www.abcam.co.jp/abpromise> or contact our technical team.

### Terms and conditions

---

- Guarantee only valid for products bought direct from Abcam or one of our authorized distributors