

Recombinant Human beta Synuclein protein ab48853

★★★★★ [1 Abreviews](#) [1 References](#) [画像数 1](#)

製品の詳細

製品名	Recombinant Human beta Synuclein protein
精製度	> 95 % SDS-PAGE.
発現系	Escherichia coli
アクセッション番号	<u>Q16143</u>
タンパク質長	Full length protein
Animal free	No
由来	Recombinant
生物種	Human
配列	MDVFMKGLSM AKEGVVAAAE KTKQGVTEAA EKTKEGVLYV GSKTREGVVQ GVASVAEKT EQASHLGGAV FSGAGNIAAA TGLVKREEFP TDLKPEEVAQ EAAEEPLIEP LMEPEGESYE DPPQEEYQEY EPEA
領域	1 to 134

特性

Our **Abpromise guarantee** covers the use of **ab48853** in the following tested applications.

The application notes include recommended starting dilutions; optimal dilutions/concentrations should be determined by the end user.

アプリケーション	Western blot
	SDS-PAGE

製品の状態	Liquid
-------	--------

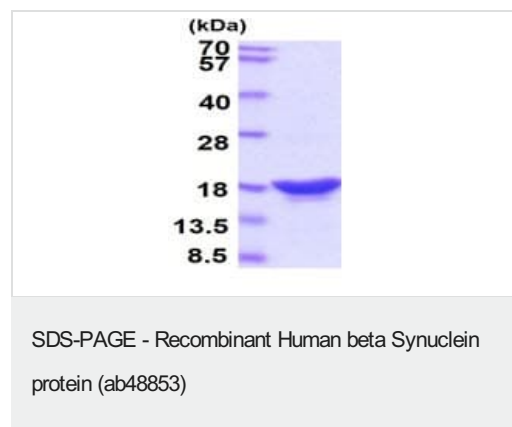
前処理および保存

保存方法および安定性	Shipped at 4°C. Upon delivery aliquot and store at -20°C. Avoid freeze / thaw cycles. pH: 7.50 Constituents: 0.0095% Magnesium chloride, 0.316% Tris HCl, 0.58% Sodium chloride
------------	---

関連情報

機能	Non-amyloid component of senile plaques found in Alzheimer disease. Could act as a regulator of SNCA aggregation process. Protects neurons from staurosporine and 6-hydroxy dopamine (6OHDA)-stimulated caspase activation in a p53/TP53-dependent manner. Contributes to restore the SNCA anti-apoptotic function abolished by 6OHDA. Not found in the Lewy bodies associated with Parkinson disease.
組織特異性	Expressed predominantly in brain; concentrated in presynaptic nerve terminals.
配列類似性	Belongs to the synuclein family.
翻訳後修飾	Phosphorylated. Phosphorylation by G-protein coupled receptor kinases (GRK) is more efficient than phosphorylation by CK1, CK2 and CaM-kinase II.
細胞内局在	Cytoplasm.

画像



ab48853 in 15%SDS-PAGE.

Please note: All products are "FOR RESEARCH USE ONLY. NOT FOR USE IN DIAGNOSTIC PROCEDURES"

Our Abpromise to you: Quality guaranteed and expert technical support

- Replacement or refund for products not performing as stated on the datasheet
- Valid for 12 months from date of delivery
- Response to your inquiry within 24 hours
- We provide support in Chinese, English, French, German, Japanese and Spanish
- Extensive multi-media technical resources to help you
- We investigate all quality concerns to ensure our products perform to the highest standards

If the product does not perform as described on this datasheet, we will offer a refund or replacement. For full details of the Abpromise, please visit <https://www.abcam.co.jp/abpromise> or contact our technical team.

Terms and conditions

- Guarantee only valid for products bought direct from Abcam or one of our authorized distributors