

Recombinant Human Bcl10 protein ab124575

画像数 1

製品の詳細

製品名	Recombinant Human Bcl10 protein
精製度	> 85 % SDS-PAGE. ab124575 is purified using conventional chromatography techniques.
発現系	Escherichia coli
アクセッション番号	<u>O95999</u>
タンパク質長	Full length protein
Animal free	No
由来	Recombinant
生物種	Human
配列	MGSSHHHHHH SGLVPRGSH MGSMEPTAP SLTEEDLTEV KKDALENLRV YLCEKIIAER HFDHLRAKKI LSREDTEEIS CRTSSRKRAG KLLDYLQENP KGLDTLVESI RREKTQNFLI QKITDEVKLL RNIKLEHLKG LKCSSCEPFP DGATNNLSRS NSDESNFSEK LRASTVMYHP EGESSTTPFF STNSSLNLPV LEVGRTEINTI FSSTTLPRPG DPGAPPLPPD LQLEEEGTCA NSSEMFLPLR SRTVSRQ
予測される分子量	29 kDa including tags
領域	1 to 233
タグ	His tag N-Terminus

特性

Our **Abpromise guarantee** covers the use of **ab124575** in the following tested applications.

The application notes include recommended starting dilutions; optimal dilutions/concentrations should be determined by the end user.

アプリケーション	SDS-PAGE Mass Spectrometry
質量分析	MALDI-TOF
製品の状態	Liquid

前処理および保存

保存方法および安定性

Shipped at 4°C. Store at +4°C short term (1-2 weeks). Upon delivery aliquot. Store at -20°C or -80°C. Avoid freeze / thaw cycle.

pH: 8.00

Constituents: 0.02% DTT, 0.32% Tris HCl, 10% Glycerol (glycerin, glycerine), 0.29% Sodium chloride

関連情報

機能

Promotes apoptosis, pro-caspase-9 maturation and activation of NF-kappa-B via NIK and IKK. May be an adapter protein between upstream TNFR1-TRADD-RIP complex and the downstream NIK-IKK-IKAP complex. Is a substrate for MALT1.

組織特異性

Ubiquitous.

関連疾患

Note=A chromosomal aberration involving BCL10 is recurrent in low-grade mucosa-associated lymphoid tissue (MALT lymphoma). Translocation t(1;14)(p22;q32). Although the BCL10/IgH translocation leaves the coding region of BCL10 intact, frequent BCL10 mutations could be attributed to the Ig somatic hypermutation mechanism resulting in nucleotide transitions.

Note=Defects in BCL10 are involved in various types of cancer.

配列類似性

Contains 1 CARD domain.

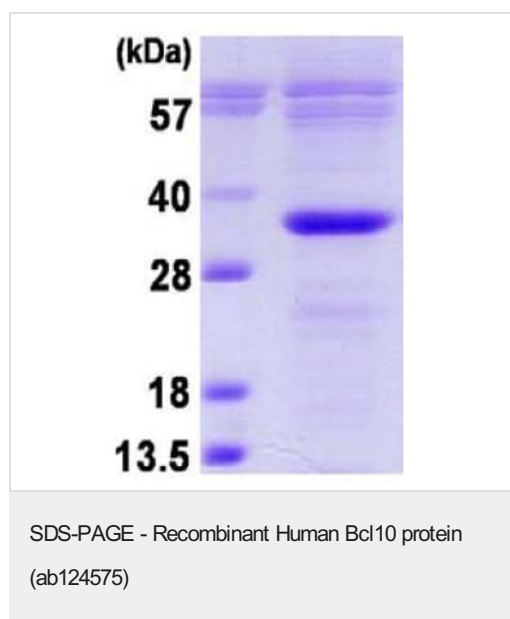
翻訳後修飾

Phosphorylated. Phosphorylation results in dissociation from TRAF2 and binding to BIRC2/c-IAP2.

細胞内局在

Cytoplasm > perinuclear region. Membrane raft. Appears to have a perinuclear, compact and filamentous pattern of expression. Also found in the nucleus of several types of tumor cells. Colocalized with DPP4 in membrane rafts.

画像



15% SDS-PAGE showing ab124575 at approximately 28.8kDa (3µg).

Note: (Molecular weight on SDS-PAGE will appear higher).

Our Abpromise to you: Quality guaranteed and expert technical support

- Replacement or refund for products not performing as stated on the datasheet
- Valid for 12 months from date of delivery
- Response to your inquiry within 24 hours

- We provide support in Chinese, English, French, German, Japanese and Spanish
- Extensive multi-media technical resources to help you
- We investigate all quality concerns to ensure our products perform to the highest standards

If the product does not perform as described on this datasheet, we will offer a refund or replacement. For full details of the Abpromise, please visit <https://www.abcam.co.jp/abpromise> or contact our technical team.

Terms and conditions

- Guarantee only valid for products bought direct from Abcam or one of our authorized distributors