

Product datasheet

Recombinant Human BARD1 protein ab114640

画像数 1

製品の詳細

製品名	Recombinant Human BARD1 protein
発現系	Wheat germ
アクセッション番号	Q99728
タンパク質長	Protein fragment
Animal free	No
由来	Recombinant
生物種	Human
配列	RRSRLNREQLLPKLFDCYFYLWGTFKHHPKDNLIKLVTAGG GQILSRKP KPDSVDTQTINTVAYHARPDSQRFCTQYIIYEDLCNYHPER VRQGKVKW
予測される分子量	37 kDa including tags
領域	658 to 757

特性

Our **Abpromise guarantee** covers the use of **ab114640** in the following tested applications.

The application notes include recommended starting dilutions; optimal dilutions/concentrations should be determined by the end user.

アプリケーション	Western blot ELISA SDS-PAGE
製品の状態	Liquid

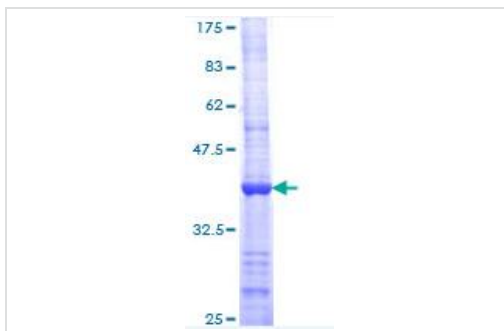
前処理および保存

保存方法および安定性	Shipped on dry ice. Upon delivery aliquot and store at -80°C. Avoid freeze / thaw cycles. pH: 8.00 Constituents: 0.3% Glutathione, 0.79% Tris HCl
------------	---

関連情報

機能	Probable E3 ubiquitin-protein ligase. The BRCA1-BARD1 heterodimer specifically mediates the formation of 'Lys-6'-linked polyubiquitin chains and coordinates a diverse range of cellular pathways such as DNA damage repair, ubiquitination and transcriptional regulation to maintain genomic stability. Plays a central role in the control of the cell cycle in response to DNA damage. Acts by mediating ubiquitin E3 ligase activity that is required for its tumor suppressor function. Also forms a heterodimer with CSTF1/CSTF-50 to modulate mRNA processing and RNAP II stability by inhibiting pre-mRNA 3' cleavage.
パスウェイ	Protein modification; protein ubiquitination.
配列類似性	Contains 4 ANK repeats. Contains 2 BRCT domains. Contains 1 RING-type zinc finger.
翻訳後修飾	Processed during apoptosis. The homodimer is more susceptible to proteolytic cleavage than the BARD1/BRCA1 heterodimer.
細胞内局在	Nucleus. During S phase of the cell cycle, colocalizes with BRCA1 into discrete subnuclear foci. Can translocate to the cytoplasm. Localizes at sites of DNA damage at double-strand breaks (DSBs); recruitment to DNA damage sites is mediated by the BRCA1-A complex.

画像



12.5% SDS-PAGE image showing ab114640 Stained with Coomassie Blue.

SDS-PAGE - Recombinant Human BARD1 protein (ab114640)

Please note: All products are "FOR RESEARCH USE ONLY. NOT FOR USE IN DIAGNOSTIC PROCEDURES"

Our Abpromise to you: Quality guaranteed and expert technical support

- Replacement or refund for products not performing as stated on the datasheet
- Valid for 12 months from date of delivery
- Response to your inquiry within 24 hours
- We provide support in Chinese, English, French, German, Japanese and Spanish
- Extensive multi-media technical resources to help you
- We investigate all quality concerns to ensure our products perform to the highest standards

If the product does not perform as described on this datasheet, we will offer a refund or replacement. For full details of the Abpromise, please visit <https://www.abcam.co.jp/abpromise> or contact our technical team.

Terms and conditions

- Guarantee only valid for products bought direct from Abcam or one of our authorized distributors