

### Recombinant human BAFF-R protein (Fc Chimera) ab83931

画像数 3

#### 製品の詳細

製品名	Recombinant human BAFF-R protein (Fc Chimera)
生理活性	The ED <sub>50</sub> of BAFF Receptor – Fc Chimera is typically 0.02-0.08 µg/ml as measured by its ability to neutralize BAFF-mediated proliferation of the RPMI 8226 cell line.
精製度	> 95 % SDS-PAGE.
発現系	HEK 293 cells
アクセッション番号	<b><u>Q96RJ3</u></b>
タンパク質長	Protein fragment
Animal free	No
由来	Recombinant
生物種	Human
配列	<p>Theoretical Sequence:</p> <p>SLRGRDAPAPTPCVPAECFDLLVRHCVACGLLRTPRKPAGASSPAPRTA</p> <p>LQPQESVGAGAGEAALPGSSNTKVDKKVEPKSCDKTHTCPPCPAPELLGG</p> <p>PSVFLFPPKPKDTLMISRTPEVTCVVVDVSHEDPEVKFNWYVDGVEVHNA</p> <p>KTKPREEQYNSTYRVVSVLTVLHQDWLNGKEYKCKVSNKALPAPIEKTIS</p> <p>KAKGQPREPQVYTLPPSRDELTKNQVSLTCLVKGFYPSDIAVEWESNGQP</p> <p>ENNYKTTTPVLDSDGSFFLYSKLTVDKSRWQQGNVFCFSVMHEALHNHYT QKSLSLSPGK</p>

**配列の追加情報** A fusion of the signal peptide of human GH receptor to the extracellular domain of human BAFF-R (aa 2-73), and the Fc region of human IgG1 (aa 93-330), expressed in modified human 293 cells.

#### 特性

Our **Abpromise guarantee** covers the use of **ab83931** in the following tested applications.

The application notes include recommended starting dilutions; optimal dilutions/concentrations should be determined by the end user.

**アプリケーション** SDS-PAGE

## 製品の状態

Lyophilized

## 前処理および保存

### 保存方法および安定性

Shipped at 4°C. After reconstitution store at -20°C. Avoid freeze / thaw cycles.

Constituents: 10% Trehalose, 1% Human serum albumin

This product is an active protein and may elicit a biological response in vivo, handle with caution.

### 再構成

It is recommended that 0.5 ml of sterile phosphate-buffered saline be added to the vial. Following reconstitution short-term storage at 4°C is recommended, with longer-term storage in aliquots at -18 to -20°C. Repeated freeze thawing is not recommended.

## 関連情報

### 機能

B-cell receptor specific for TNFSF13B/TALL1/BAFF/BLyS. Promotes the survival of mature B-cells and the B-cell response.

### 組織特異性

Highly expressed in spleen and lymph node, and in resting B-cells. Detected at lower levels in activated B-cells, resting CD4+ T-cells, in thymus and peripheral blood leukocytes.

### 関連疾患

Defects in TNFRSF13C are the cause of immunodeficiency common variable type 4 (CVID4) [MIM:613494]; also called antibody deficiency due to BAFFR defect. CVID4 is a primary immunodeficiency characterized by antibody deficiency, hypogammaglobulinemia, recurrent bacterial infections and an inability to mount an antibody response to antigen. The defect results from a failure of B-cell differentiation and impaired secretion of immunoglobulins; the numbers of circulating B cells is usually in the normal range, but can be low.

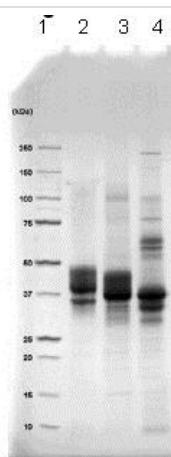
### 配列類似性

Contains 1 TNFR-Cys repeat.

### 細胞内局在

Membrane.

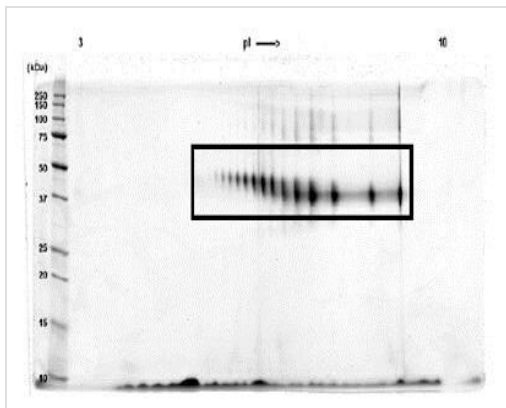
## 画像



SDS-PAGE - Recombinant human BAFF-R protein  
(Fc Chimera) (ab83931)

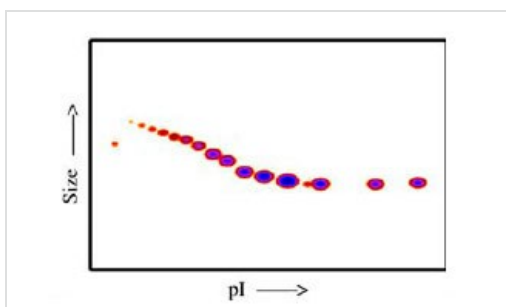
Lane 1 – MW markers; Lane 2 – ab83931; Lane 3 – ab83931 treated with PNGase F to remove potential N-linked glycans; Lane 4 – ab83931 treated with a glycosidase cocktail to remove potential N- and O-linked glycans. 3 µg of protein was loaded per lane. Gels were stained with Coomassie G250.

Drop in MW after treatment with PNGase F indicates the presence of N-linked glycans. A subsequent drop in MW after treatment with a glycosidase cocktail indicates O-linked glycans are also present. Additional high MW bands in lane 4 are glycosidase enzymes.



SDS-PAGE - Recombinant human BAFF-R protein  
(Fc Chimera) (ab83931)

A sample of ab83931 without carrier protein was reduced and alkylated. 40 µg of protein was loaded, focused on a 3-10 IPG strip then run on a 4-20% Tris-HCl 2D gel. Spot train (Deep Purple™ stained) indicates presence of multiple glycoforms of BAFF Receptor - Fc Chimera. Spots within the spot train were cut from the gel and identified by protein mass fingerprinting as BAFF Receptor - Fc Chimera.



Functional Studies - Recombinant human BAFF-R protein (Fc Chimera) (ab83931)

Post-translational modifications result in protein heterogeneity. The densitometry scan demonstrates the purified human cell expressed protein exists in multiple glycoforms, which differ according to their level of post-translational modification.

**Please note:** All products are "FOR RESEARCH USE ONLY. NOT FOR USE IN DIAGNOSTIC PROCEDURES"

### Our Abpromise to you: Quality guaranteed and expert technical support

- Replacement or refund for products not performing as stated on the datasheet
- Valid for 12 months from date of delivery
- Response to your inquiry within 24 hours
- We provide support in Chinese, English, French, German, Japanese and Spanish
- Extensive multi-media technical resources to help you
- We investigate all quality concerns to ensure our products perform to the highest standards

If the product does not perform as described on this datasheet, we will offer a refund or replacement. For full details of the Abpromise, please visit <https://www.abcam.co.jp/abpromise> or contact our technical team.

### Terms and conditions

- Guarantee only valid for products bought direct from Abcam or one of our authorized distributors