

Recombinant Human ASIC1 protein ab114681

画像数 1

製品の詳細

製品名	Recombinant Human ASIC1 protein
発現系	Wheat germ
アクセッション番号	<u>P78348</u>
タンパク質長	Full length protein
Animal free	No
由来	Recombinant
生物種	Human
配列	MELKAEVEEVGGVQPVSIQAFASSTLHGLAHIFS YERLSLK RALWALCF LGSLAVLLCVCTERVQYYFHYHHVTKLDEVAASQLTFPAVTL CNLNEFRF SQVSKNDLYHAGELLALLNNRYEIPDTQMADEKQLEILQDKA NFRSFKPK PFNMREFYDRAGHDIRDMLLSCHFRGEVCSAEDFKVVFTRYG KCYTFNSG RDGRPRLKTMKGGTGNGLEIMLDIQQDEYLPVWGETDETSFE AGIKVQIH SQDEPPFIDQLGFGVAPGFQTFVACQEQLIYLPPPWTCKA VTMDSLDL FFDSYSITACRIDCETRYLVENCNCRMVHMPGDAPYCTPEQY KECADPAL DFLVEKDQEYCVCEMPCNLTRYGKELSMVKIPSKASAKYLAK KFNKSEQY IGENILVLDIFFEVLNYETIEQKKAYEIAGLLDIGGQMGLF IGASILTV LELFDYAYEVIKHKLCRRGKCQKEAKRSSADKGVALLDDVK RHNPCESL RGHYPAGMTYAANILPHHPARGTFEDFTC
予測される分子量	84 kDa including tags
領域	1 to 528

特性

Our **Abpromise guarantee** covers the use of **ab114681** in the following tested applications.

The application notes include recommended starting dilutions; optimal dilutions/concentrations should be determined by the end user.

アプリケーション	Western blot SDS-PAGE ELISA
製品の状態	Liquid
備考	This product was previously labelled as ACCN2.

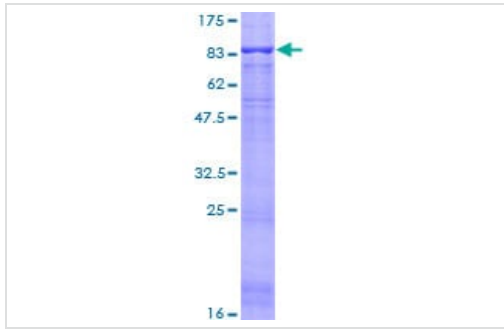
前処理および保存

保存方法および安定性	Shipped on dry ice. Upon delivery aliquot and store at -80°C. Avoid freeze / thaw cycles. pH: 8.00 Constituents: 0.3% Glutathione, 0.79% Tris HCl
-------------------	---

関連情報

機能	Cation channel with high affinity for sodium, which is gated by extracellular protons and inhibited by the diuretic amiloride. Also permeable for Ca(2+), Li(+) and K(+). Generates a biphasic current with a fast inactivating and a slow sustained phase. Mediates glutamate-independent Ca(2+) entry into neurons upon acidosis. This Ca(2+) overloading is toxic for cortical neurons and may be in part responsible for ischemic brain injury. Heteromeric channel assembly seems to modulate channel properties. Functions as a postsynaptic proton receptor that influences intracellular Ca(2+) concentration and calmodulin-dependent protein kinase II phosphorylation and thereby the density of dendritic spines. Modulates activity in the circuits underlying innate fear.
組織特異性	Expressed in most or all neurons.
配列類似性	Belongs to the amiloride-sensitive sodium channel (TC 1.A.6) family. ACCN2 subfamily.
翻訳後修飾	Phosphorylation by PKA regulates interaction with PRKCABP and subcellular location. Phosphorylation by PKC may regulate the channel.
細胞内局在	Cell membrane. Localizes in synaptosomes at dendritic synapses of neurons. Colocalizes with DLG4.

画像



ab114681 analyzed on a 12.5% SDS-PAGE gel stained with Coomassie Blue.

SDS-PAGE - Recombinant Human ASIC1 protein (ab114681)

Please note: All products are "FOR RESEARCH USE ONLY. NOT FOR USE IN DIAGNOSTIC PROCEDURES"

Our Abpromise to you: Quality guaranteed and expert technical support

- Replacement or refund for products not performing as stated on the datasheet
- Valid for 12 months from date of delivery
- Response to your inquiry within 24 hours

- We provide support in Chinese, English, French, German, Japanese and Spanish
- Extensive multi-media technical resources to help you
- We investigate all quality concerns to ensure our products perform to the highest standards

If the product does not perform as described on this datasheet, we will offer a refund or replacement. For full details of the Abpromise, please visit <https://www.abcam.co.jp/abpromise> or contact our technical team.

Terms and conditions

- Guarantee only valid for products bought direct from Abcam or one of our authorized distributors