

Recombinant Human ARL3 protein ab113590

画像数 1

製品の詳細

製品名	Recombinant Human ARL3 protein
精製度	> 95 % SDS-PAGE. ab113590 was purified using conventional chromatography.
発現系	Escherichia coli
アクセッション番号	<u>P36405</u>
タンパク質長	Full length protein
Animal free	No
由来	Recombinant
生物種	Human
配列	<p>MGSSHHHHHHSSGLVPRGSHMGSHMGLLSILRKLSAPDQ EVRILLGLD NAGKTTLLKQLASEDISHITPTQGFNIKSVQSQGFKLNVDI GGQRKIRP YWKNYFENTDILIIYVIDSADRKRFEEETGQELAELEEKLSC VPVLIFAN KQDLLTAAPASEIAEGLNLHTIRDRVWQIQSCSALTGEGVQD GMNWVCKN VNAKKK</p>
予測される分子量	23 kDa including tags
領域	1 to 182
タグ	His tag N-Terminus

特性

Our **Abpromise guarantee** covers the use of **ab113590** in the following tested applications.

The application notes include recommended starting dilutions; optimal dilutions/concentrations should be determined by the end user.

アプリケーション	SDS-PAGE
	Mass Spectrometry
質量分析	MALDI-TOF
製品の状態	Liquid

前処理および保存

保存方法および安定性

Shipped at 4°C. Store at +4°C short term (1-2 weeks). Upon delivery aliquot. Store at -20°C long term. Avoid freeze / thaw cycle.

pH: 8.00

Constituents: 0.002% PMSF, 0.02% DTT, 0.32% Tris HCl, 30% Glycerol (glycerin, glycerine), 0.58% Sodium chloride

関連情報

機能

Small GTP-binding protein which cycles between an inactive GDP-bound and an active GTP-bound form, and the rate of cycling is regulated by guanine nucleotide exchange factors (GEF) and GTPase-activating proteins (GAP). GTP-binding protein that does not act as an allosteric activator of the cholera toxin catalytic subunit. Requires assistance from GTPase-activating proteins (GAPs) like RP2 and PDE6D, in order to cycle between inactive GDP-bound and active GTP-bound forms. Required for normal cytokinesis and cilia signaling.

組織特異性

Expressed in the retina. Strongly expressed in connecting cilium, the myoid region of the inner segments (IS) and in cone photoreceptors (at protein level).

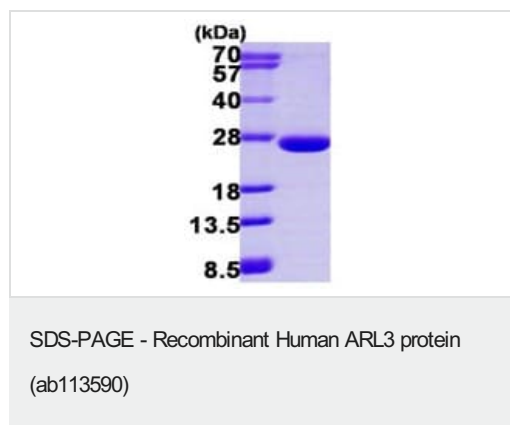
配列類似性

Belongs to the small GTPase superfamily. Arf family.

細胞内局在

Golgi apparatus membrane. Cytoplasm > cytoskeleton > spindle. Nucleus. Cytoplasm > cytoskeleton > centrosome. Cytoplasm. Cell projection > cilium. Detected predominantly in the photoreceptor connecting cilium. Present on the mitotic spindle. Centrosome-associated throughout the cell cycle. Not detected to interphase microtubules.

画像



15% SDS-PAGE analysis of ab113590 (3μg)

Please note: All products are "FOR RESEARCH USE ONLY. NOT FOR USE IN DIAGNOSTIC PROCEDURES"

Our Abpromise to you: Quality guaranteed and expert technical support

- Replacement or refund for products not performing as stated on the datasheet
- Valid for 12 months from date of delivery
- Response to your inquiry within 24 hours
- We provide support in Chinese, English, French, German, Japanese and Spanish

- Extensive multi-media technical resources to help you
- We investigate all quality concerns to ensure our products perform to the highest standards

If the product does not perform as described on this datasheet, we will offer a refund or replacement. For full details of the Abpromise, please visit <https://www.abcam.co.jp/abpromise> or contact our technical team.

Terms and conditions

- Guarantee only valid for products bought direct from Abcam or one of our authorized distributors