

# Recombinant Human ARL 1 protein ab99261

画像数 1

### 製品の詳細

製品名	Recombinant Human ARL 1 protein
精製度	> 95 % SDS-PAGE. ab99261 is purified using conventional chromatography techniques.
発現系	Escherichia coli
アクセッション番号	<b><u>P40616</u></b>
タンパク質長	Full length protein
Animal free	No
由来	Recombinant
生物種	Human
配列	<p>MGSSHHHHHHSSGLVPRGSHMGGFFSSIFSSLFGTREMRI            LILGLDGAGK            TTILYRLQVGEVVTTIPTIGFNVETVTYKNLKFQVWDLGGQT            SIRPYWRC            YYSNTDAVIYVVDSCDRDRIGISKSELVAMLEEEELRKAILV            VFANKQDM            EQAMTSSEMANSGLPALKDRKWQIFKTSATKGTGLDEAMEW            LVETLKSR Q</p>
予測される分子量	23 kDa including tags
領域	1 to 181
タグ	His tag N-Terminus

### 特性

Our **Abpromise guarantee** covers the use of **ab99261** in the following tested applications.

The application notes include recommended starting dilutions; optimal dilutions/concentrations should be determined by the end user.

アプリケーション	SDS-PAGE
	Mass Spectrometry
質量分析	MALDI-TOF
製品の状態	Liquid

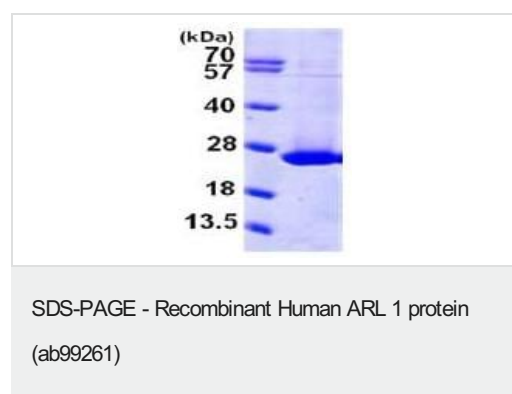
### 前処理および保存

<b>保存方法および安定性</b>	<p>Shipped at 4°C. Upon delivery aliquot and store at -20°C or -80°C. Avoid repeated freeze / thaw cycles.</p> <p>pH: 8.00</p> <p>Constituents: 0.0308% DTT, 0.316% Tris HCl, 40% Glycerol (glycerin, glycerine), 0.58% Sodium chloride</p>
-------------------	---

## 関連情報

<b>機能</b>	<p>GTP-binding protein that has very low efficiency as allosteric activator of the cholera toxin catalytic subunit, an ADP-ribosyltransferase. Can activate phospholipase D with very low efficiency. Important for normal function of the Golgi apparatus.</p>
<b>組織特異性</b>	<p>Detected in heart, liver, lung and liver (at protein level). Detected in fetal heart, lung, liver and kidney. Detected in adult heart, placenta, lung, liver, skeletal muscle, kidney and pancreas.</p>
<b>配列類似性</b>	<p>Belongs to the small GTPase superfamily. Arf family.</p>
<b>細胞内局在</b>	<p>Golgi apparatus membrane.</p>

## 画像



15% SDS-PAGE showing ab99261 at approximately 22.5kDa (3μg).

**Please note:** All products are "FOR RESEARCH USE ONLY. NOT FOR USE IN DIAGNOSTIC PROCEDURES"

## Our Abpromise to you: Quality guaranteed and expert technical support

- Replacement or refund for products not performing as stated on the datasheet
- Valid for 12 months from date of delivery
- Response to your inquiry within 24 hours
- We provide support in Chinese, English, French, German, Japanese and Spanish
- Extensive multi-media technical resources to help you
- We investigate all quality concerns to ensure our products perform to the highest standards

If the product does not perform as described on this datasheet, we will offer a refund or replacement. For full details of the Abpromise, please visit <https://www.abcam.co.jp/abpromise> or contact our technical team.

## Terms and conditions

---

- Guarantee only valid for products bought direct from Abcam or one of our authorized distributors