

Recombinant Human ARH protein ab123174

画像数 1

製品の詳細

製品名	Recombinant Human ARH protein
精製度	> 90 % SDS-PAGE. ab123174 is purified by using conventional chromatography techniques.
発現系	Escherichia coli
アクセッション番号	<u>Q5SW96</u>
タンパク質長	Full length protein
Animal free	No
由来	Recombinant
生物種	Human
配列	MGSSHHHHHH SSGLVPRGSH MDALKSAGRA LIRSPSLAKQ SWGGGGRHRK LPENWTDTRE TLLEGMLFSL KYLGMTLVEQ PKGEELSAAA IKRIVATAKA SGKKLQKVTI KVSPRGIILT DNLTNQLIEN VSIYRISYCT ADKMHDKVFA YIAQSQHNQS LECHAFLCTK RKMAQAVTLT VAQAFKVAFE FWQVSKEEKE KRDKASQEGG DVLGARQDCT PPLKSLVATG NLLDLEETAK APLSTVSANT TNMDEVPRPQ ALSGSSVVWE LDDGLDEAFS RLAQSRTNPQ VLDTGLTAQD MHYAQCLSPV DWDKPDSSGT EQDDLFSF
予測される分子量	36 kDa including tags
領域	1 to 308
タグ	His tag N-Terminus

特性

Our **Abpromise guarantee** covers the use of **ab123174** in the following tested applications.

The application notes include recommended starting dilutions; optimal dilutions/concentrations should be determined by the end user.

アプリケーション	SDS-PAGE Mass Spectrometry
質量分析	MALDI-TOF

製品の状態

Liquid

前処理および保存

保存方法および安定性

Shipped at 4°C. Store at +4°C short term (1-2 weeks). Upon delivery aliquot. Store at -20°C or -80°C. Avoid freeze / thaw cycle.

pH: 8.00

Constituents: 0.03% DTT, 0.32% Tris HCl, 10% Glycerol (glycerin, glycerine), 1.17% Sodium chloride

関連情報

機能

Adapter protein (clathrin-associated sorting protein (CLASP)) required for efficient endocytosis of the LDL receptor (LDLR) in polarized cells such as hepatocytes and lymphocytes, but not in non-polarized cells (fibroblasts). May be required for LDL binding and internalization but not for receptor clustering in coated pits. May facilitate the endocytosis of LDLR and LDLR-LDL complexes from coated pits by stabilizing the interaction between the receptor and the structural components of the pits. May also be involved in the internalization of other LDLR family members. Binds to phosphoinositides, which regulate clathrin bud assembly at the cell surface.

組織特異性

Expressed at high levels in the kidney, liver, and placenta, with lower levels detectable in brain, heart, muscle, colon, spleen, intestine, lung, and leukocytes.

関連疾患

Defects in LDLRAP1 are the cause of autosomal recessive hypercholesterolemia (ARH) [MIM:603813]. ARH is a disorder caused by defective internalization of LDL receptors (LDLR) in the liver. ARH has the clinical features of familial hypercholesterolemia (FH) [MIM:143890] homozygotes, including severely elevated plasma LDL cholesterol, tuberous and tendon xanthomata, and premature atherosclerosis. LDL receptor (LDLR) activity measured in skin fibroblasts is normal, as the LDL binding ability.

配列類似性

Contains 1 PID domain.

ドメイン

The [DE]-X(1,2)-F-X-X-[FL]-X-X-X-R motif mediates interaction the AP-2 complex subunit AP2B1.

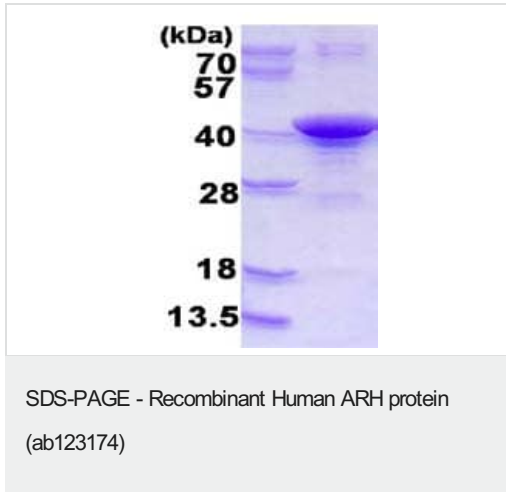
翻訳後修飾

Phosphorylated upon DNA damage, probably by ATM or ATR.

細胞内局在

Cytoplasm.

画像



15% SDS-PAGE analysis of 3ug ab123174.

Please note: All products are "FOR RESEARCH USE ONLY. NOT FOR USE IN DIAGNOSTIC PROCEDURES"

Our Abpromise to you: Quality guaranteed and expert technical support

- Replacement or refund for products not performing as stated on the datasheet
- Valid for 12 months from date of delivery
- Response to your inquiry within 24 hours

- We provide support in Chinese, English, French, German, Japanese and Spanish
- Extensive multi-media technical resources to help you
- We investigate all quality concerns to ensure our products perform to the highest standards

If the product does not perform as described on this datasheet, we will offer a refund or replacement. For full details of the Abpromise, please visit <https://www.abcam.co.jp/abpromise> or contact our technical team.

Terms and conditions

- Guarantee only valid for products bought direct from Abcam or one of our authorized distributors