

Recombinant Human alpha smooth muscle Actin protein ab134555

1 References 画像数 1

製品の詳細

製品名	Recombinant Human alpha smooth muscle Actin protein
精製度	> 85 % SDS-PAGE. ab134555 is purified using conventional chromatography techniques.
発現系	Escherichia coli
アクセッション番号	P62736
タンパク質長	Full length protein
Animal free	No
由来	Recombinant
生物種	Human
配列	MGSSHHHHHHSSGLVPRGSHMGSHMEEEDSTALVCDNGSGLC KAGFAGDD APRAVFPSIVGRPRHQGMVGMGQKDSYVGDEAQSKRGILT KYPIEHGI ITNWDDMEKIWHHSFYNELRVAPEEHPTLLTEAPLNPKANRE KMTQIMFE TFNVPAMYVAIQAVLSLYASGRTTGIVLDSGDGVTHNVPIYE GYALPHAI MRDLAGRDLTDYLMKILTERGYSFVTTAEREIVRDIKEKLC YVALDFEN EMATAASSSSLEKSYELPDGQVITIGNERFRCPETLFQPSFI GMESAGIH ETTYNSIMKCDIDIRKDLYANNVLSGGTTMYPGIADRMQKEI TALAPSTM KIKIIAPPERKYSVWIGGSILASLSTFQQMWISKQEYDEAGP SIVHRKCF
予測される分子量	44 kDa including tags
領域	3 to 377
タグ	His tag N-Terminus

特性

Our **Abpromise guarantee** covers the use of **ab134555** in the following tested applications.

The application notes include recommended starting dilutions; optimal dilutions/concentrations should be determined by the end user.

アプリケーション Mass Spectrometry

SDS-PAGE

質量分析 MALDI-TOF

製品の状態 Liquid

前処理および保存

保存方法および安定性 Shipped at 4°C. Store at +4°C short term (1-2 weeks). Upon delivery aliquot. Store at -20°C or -80°C. Avoid freeze / thaw cycle.

pH: 8.00

Constituents: 0.32% Tris HCl, 10% Glycerol (glycerin, glycerine), 0.88% Sodium chloride

関連情報

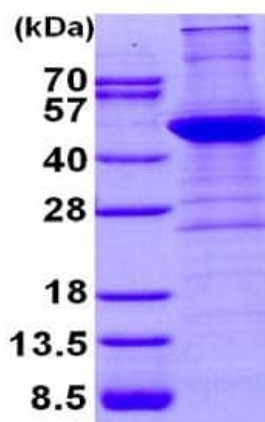
機能 Actins are highly conserved proteins that are involved in various types of cell motility and are ubiquitously expressed in all eukaryotic cells.

関連疾患 Defects in ACTA2 are the cause of aortic aneurysm familial thoracic type 6 (AAT6) [MIM:611788]. AATs are characterized by permanent dilation of the thoracic aorta usually due to degenerative changes in the aortic wall. They are primarily associated with a characteristic histologic appearance known as 'medial necrosis' or 'Erdheim cystic medial necrosis' in which there is degeneration and fragmentation of elastic fibers, loss of smooth muscle cells, and an accumulation of basophilic ground substance.

配列類似性 Belongs to the actin family.

細胞内局在 Cytoplasm > cytoskeleton.

画像



15% SDS-PAGE analysis of 3 µg ab134555.

SDS-PAGE - Recombinant Human alpha smooth muscle Actin protein (ab134555)

Please note: All products are "FOR RESEARCH USE ONLY. NOT FOR USE IN DIAGNOSTIC PROCEDURES"

Our Abpromise to you: Quality guaranteed and expert technical support

- Replacement or refund for products not performing as stated on the datasheet
- Valid for 12 months from date of delivery
- Response to your inquiry within 24 hours
- We provide support in Chinese, English, French, German, Japanese and Spanish
- Extensive multi-media technical resources to help you
- We investigate all quality concerns to ensure our products perform to the highest standards

If the product does not perform as described on this datasheet, we will offer a refund or replacement. For full details of the Abpromise, please visit <https://www.abcam.co.jp/abpromise> or contact our technical team.

Terms and conditions

- Guarantee only valid for products bought direct from Abcam or one of our authorized distributors