

Recombinant human AKT3 protein ab79799

画像数 2

製品の詳細

製品名	Recombinant human AKT3 protein
生理活性	Specific Activity: 14 pmol/min/μg.
精製度	> 95 % SDS-PAGE. Affinity purified.
発現系	Baculovirus infected Sf9 cells
アクセッション番号	<u>Q9Y243</u>
タンパク質長	Full length protein
Animal free	No
由来	Recombinant
生物種	Human
配列	MSPIDPMGHHHHHHGRRRASVAAGILVPRGSPGLDGICIEE FSDVTIVK EGWVQKRGEYIKNWRPRYFLLKTDGSGFIGYKEKPDVDLPYP LNNFSVAK CQLMKTERPKPNTFIIRCLQWTTVIERTFHVDTPEEREWTE AIQAVADR LQRQEEERMNCSPTSQIDNIGEEEMDASTTHHKRKTMNDFDY LKLLGKGT FGKVILVREKASGKYAMKILKKEVIAKDEVAHTLTESRVL KNTRHPFL TSLKYSFQTKDRLCFVMEYVNGGELFFHLSRERVFSEDRTRF YGAEIVSA LDYLHSGKIVYRDLKLENLMLDKDGHKIDTFGLCKEGITDA ATMKTFCG TPEYLAPEVLEDNDYGRAVDWWGLGVVMYEMMCGRLPFYNQD HEKLFELI LMEDIKFPRTLSSDAKSLLSGLLIKDPNKRLGGGPDDAKEIM RHSFFSGV NWQDVYDKKLVPFPKQVTSETDTRYFDEEFTAQTITITPPE KYDEDGMD CMDNERRPHFPQFSYSASGRE
予測される分子量	60 kDa
領域	2 to 479
タグ	His tag N-Terminus

配列の追加情報

Sequence includes His tag and linker (with the Thrombin cleavage site)

特性

Our **Abpromise guarantee** covers the use of **ab79799** in the following tested applications.

The application notes include recommended starting dilutions; optimal dilutions/concentrations should be determined by the end user.

アプリケーション	SDS-PAGE Functional Studies
製品の状態	Liquid

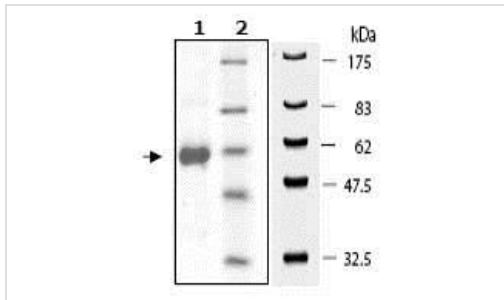
前処理および保存

保存方法および安定性	Shipped on Dry Ice. Upon delivery aliquot. Store at -80°C. Avoid freeze / thaw cycle. pH: 8.00 Constituents: 0.395% Tris HCl, 0.05% Tween, 10% Glycerol (glycerin, glycerine), 0.8004% Sodium chloride This product is an active protein and may elicit a biological response in vivo, handle with caution.
------------	--

関連情報

機能	IGF-1 leads to the activation of AKT3, which may play a role in regulating cell survival. Capable of phosphorylating several known proteins. Truncated isoform 2/PKB gamma 1 without the second serine phosphorylation site could still be stimulated but to a lesser extent.
組織特異性	In adult tissues, it is highly expressed in brain, lung and kidney, but weakly in heart, testis and liver. In fetal tissues, it is highly expressed in heart, liver and brain and not at all in kidney.
配列類似性	Belongs to the protein kinase superfamily. AGC Ser/Thr protein kinase family. RAC subfamily. Contains 1 AGC-kinase C-terminal domain. Contains 1 PH domain. Contains 1 protein kinase domain.
ドメイン	Binding of the PH domain to the phosphatidylinositol 3-kinase alpha (PI(3)K) results in its targeting to the plasma membrane.
翻訳後修飾	Phosphorylation on Thr-305 and Ser-472 is required for full activity (By similarity). Phosphorylated upon DNA damage, probably by ATM or ATR. Ubiquitinated. When fully phosphorylated and translocated into the nucleus, undergoes 'Lys-48'-polyubiquitination catalyzed by TTC3, leading to its degradation by the proteasome.
細胞内局在	Cytoplasm. Membrane. Membrane-associated after cell stimulation leading to its translocation.

画像

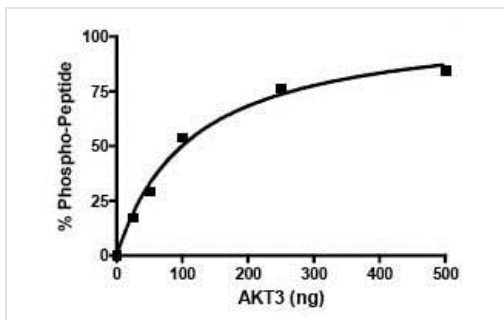


10% SDS-PAGE, Coomassie staining.

Lane 1: ab79799 5 μ g.

Lane 2: Protein marker.

SDS-PAGE - Recombinant human AKT3 protein (ab79799)



Kinase Assay: Specific Activity 10 pmol/min/ μ g.

Functional Studies - Recombinant human AKT3 protein (ab79799)

Please note: All products are "FOR RESEARCH USE ONLY. NOT FOR USE IN DIAGNOSTIC PROCEDURES"

Our Abpromise to you: Quality guaranteed and expert technical support

- Replacement or refund for products not performing as stated on the datasheet
- Valid for 12 months from date of delivery
- Response to your inquiry within 24 hours
- We provide support in Chinese, English, French, German, Japanese and Spanish
- Extensive multi-media technical resources to help you
- We investigate all quality concerns to ensure our products perform to the highest standards

If the product does not perform as described on this datasheet, we will offer a refund or replacement. For full details of the Abpromise, please visit <https://www.abcam.co.jp/abpromise> or contact our technical team.

Terms and conditions

- Guarantee only valid for products bought direct from Abcam or one of our authorized distributors