

Recombinant human AKT2 protein ab60322

画像数 5

製品の詳細

| | |
|-------------|--|
| 製品名 | Recombinant human AKT2 protein |
| 精製度 | > 90 % SDS-PAGE. Purity: >90% as determined by densitometry. Affinity purified. |
| 発現系 | Baculovirus infected Sf9 cells |
| タンパク質長 | Full length protein |
| Animal free | No |
| 由来 | Recombinant |
| 生物種 | Human |

特性

Our **Abpromise guarantee** covers the use of **ab60322** in the following tested applications.

The application notes include recommended starting dilutions; optimal dilutions/concentrations should be determined by the end user.

| | |
|----------|--|
| アプリケーション | SDS-PAGE Functional Studies |
| 製品の状態 | Liquid |
| 備考 | ab204851 (AKT peptide) can be utilized as a substrate for assessing kinase activity |

前処理および保存

| | |
|------------|--|
| 保存方法および安定性 | Shipped on dry ice. Upon delivery aliquot and store at -80°C. Avoid freeze / thaw cycles. pH: 7.50 Constituents: 0.0038% EGTA, 0.00174% PMSF, 0.00385% DTT, 0.79% Tris HCl, 0.00292% EDTA, 25% Glycerol (glycerin, glycerine), 0.87% Sodium chloride This product is an active protein and may elicit a biological response in vivo, handle with caution. |
|------------|--|

関連情報

| | |
|-------|---|
| 機能 | General protein kinase capable of phosphorylating several known proteins. |
| 組織特異性 | Expressed in all human cell types so far analyzed. |

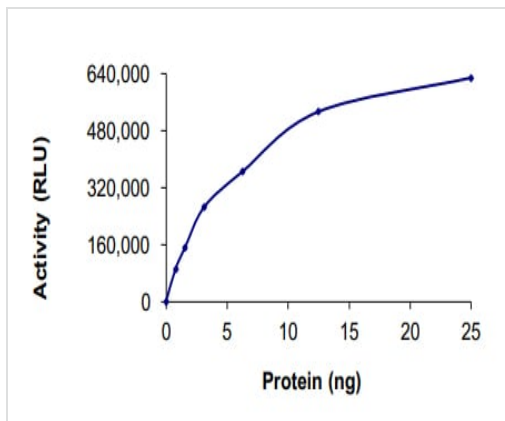
配列類似性

Belongs to the protein kinase superfamily. AGC Ser/Thr protein kinase family. RAC subfamily.
Contains 1 AGC-kinase C-terminal domain.
Contains 1 PH domain.
Contains 1 protein kinase domain.

翻訳後修飾

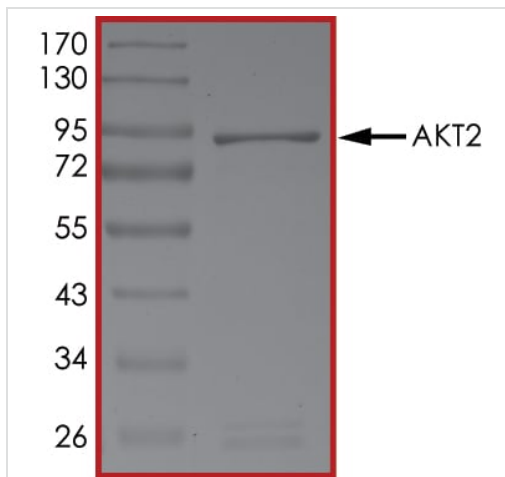
Phosphorylation on Thr-309 and Ser-474 is required for full activity.
Ubiquitinated; undergoes both 'Lys-48'- and 'Lys-63'-linked polyubiquitination. TRAF6-induced 'Lys-63'-linked AKT2 ubiquitination. When fully phosphorylated and translocated into the nucleus, undergoes 'Lys-48'-polyubiquitination catalyzed by TTC3, leading to its degradation by the proteasome.

画像



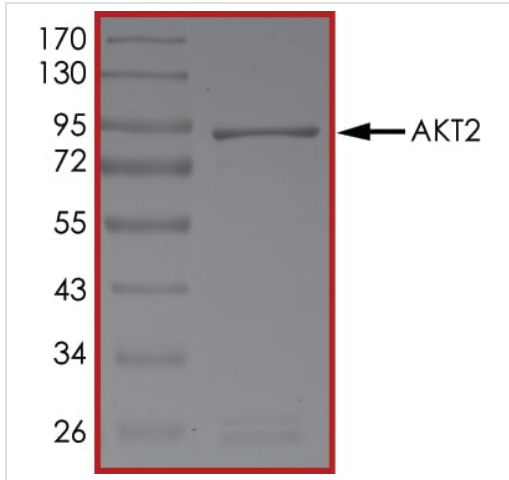
The specific activity of AKT2 (ab60322) was determined to be 80 nmol/min/mg as per activity assay protocol and was equivalent to 52 nmol/min/mg as per radiometric assay

Functional Studies - Recombinant human AKT2 protein (ab60322)



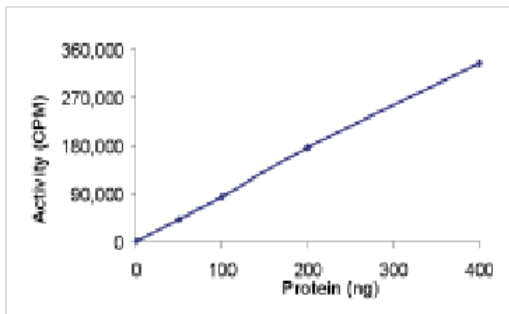
SDS PAGE analysis of ab60322

SDS-PAGE - Recombinant human AKT2 protein (ab60322)



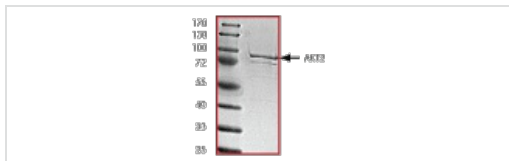
SDS PAGE analysis of ab60322

SDS-PAGE - Recombinant human AKT2 protein (ab60322)



Sample Kinase Activity Plot.

Functional Studies - Recombinant human AKT2 protein (ab60322)



ab60322 on SDS-PAGE, MW ~85kDa.

SDS-PAGE - Recombinant human AKT2 protein (ab60322)

Please note: All products are "FOR RESEARCH USE ONLY. NOT FOR USE IN DIAGNOSTIC PROCEDURES"

Our Abpromise to you: Quality guaranteed and expert technical support

- Replacement or refund for products not performing as stated on the datasheet
- Valid for 12 months from date of delivery

- Response to your inquiry within 24 hours
- We provide support in Chinese, English, French, German, Japanese and Spanish
- Extensive multi-media technical resources to help you
- We investigate all quality concerns to ensure our products perform to the highest standards

If the product does not perform as described on this datasheet, we will offer a refund or replacement. For full details of the Abpromise, please visit <https://www.abcam.co.jp/abpromise> or contact our technical team.

Terms and conditions

- Guarantee only valid for products bought direct from Abcam or one of our authorized distributors