

### Recombinant Human ACY-1 protein ab99247

画像数 1

#### 製品の詳細

製品名	Recombinant Human ACY-1 protein
精製度	> 90 % SDS-PAGE. ab99247 is purified using conventional chromatography techniques.
発現系	Escherichia coli
アクセッション番号	<b><u>Q03154</u></b>
タンパク質長	Full length protein
Animal free	No
由来	Recombinant
生物種	Human
配列	<p>MGSSHHHHHSSGLVPRGSHMTSKGP EEEHPSVT LFRQYL  RIRTVQPKPD  YGA AVAFFEETARQLGLGCQKVEVAPGYVVTVLTPGNTPTL  SSILLNSH  TDVVPVFKEHWSHDPFEAFKDSEGYIYARGAQDMKCVSIQYL  EAVRRLKV  EGHRFPRTIHM T FVPDEEVGGHQGMELFVQRPEFHALRAGFA  LDEGIANP  TDAFTVFYSERSPPWWVRVTSTGRPGHASRFMEDTAAEKLHKV  VNSILAFR  EKEWQRLQSNPHLKEG SVTSVNLTKLEGGVAYNVIPATMSAS  FDFRVAPD  VDFKAFEEQLQSWCQAAGEGV TLEFAQKWMHPQVTPTDDSNP  WWAAFSRV  CKDMNLTLEPEIMPAATDNRYIRAVGV PALGFSPMNRTPVLL  HDHDERLH EAVFLRGVDIYTRLLPALASVPALPSDS</p>
予測される分子量	48 kDa including tags
領域	1 to 408
タグ	His tag N-Terminus

#### 特性

Our **Abpromise guarantee** covers the use of **ab99247** in the following tested applications.

The application notes include recommended starting dilutions; optimal dilutions/concentrations should be determined by the end user.

アプリケーション	SDS-PAGE
	Mass Spectrometry
質量分析	MALDI-TOF
製品の状態	Liquid

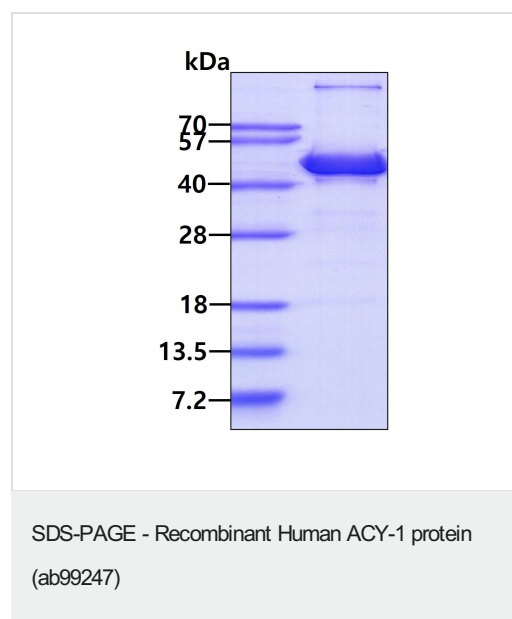
#### 前処理および保存

保存方法および安定性	Shipped at 4°C. Upon delivery aliquot and store at -20°C or -80°C. Avoid repeated freeze / thaw cycles. pH: 7.40 Constituents: 10% Glycerol (glycerin, glycerine), PBS
------------	--

#### 関連情報

機能	Involved in the hydrolysis of N-acylated or N-acetylated amino acids (except L-aspartate).
組織特異性	Expression is highest in kidney, strong in brain and weaker in placenta and spleen.
関連疾患	Defects in ACY1 are the cause of aminoacylase-1 deficiency (ACY1D) [MIM:609924]. ACY1D results in a metabolic disorder manifesting with encephalopathy, unspecific psychomotor delay, psychomotor delay with atrophy of the vermis and syringomyelia, marked muscular hypotonia or normal clinical features. Epileptic seizures are a frequent feature. All affected individuals exhibit markedly increased urinary excretion of several N-acetylated amino acids.
配列類似性	Belongs to the peptidase M20A family.
細胞内局在	Cytoplasm.

#### 画像



15% SDS-PAGE using ab99247 (3μg).

**Please note:** All products are "FOR RESEARCH USE ONLY. NOT FOR USE IN DIAGNOSTIC PROCEDURES"

### **Our Abpromise to you: Quality guaranteed and expert technical support**

---

- Replacement or refund for products not performing as stated on the datasheet
- Valid for 12 months from date of delivery
- Response to your inquiry within 24 hours
- We provide support in Chinese, English, French, German, Japanese and Spanish
- Extensive multi-media technical resources to help you
- We investigate all quality concerns to ensure our products perform to the highest standards

If the product does not perform as described on this datasheet, we will offer a refund or replacement. For full details of the Abpromise, please visit <https://www.abcam.co.jp/abpromise> or contact our technical team.

### **Terms and conditions**

---

- Guarantee only valid for products bought direct from Abcam or one of our authorized distributors