

# Recombinant Human Activin Receptor Type IIB/ACVR2B protein ab114488

画像数 1

### 製品の詳細

製品名	Recombinant Human Activin Receptor Type IIB/ACVR2B protein
発現系	Wheat germ
アクセッション番号	<b><u>Q13705</u></b>
タンパク質長	Protein fragment
Animal free	No
由来	Recombinant
生物種	Human
配列	RGEAETRECIYYNANWELERTNQSGLERCEGEQDKRLHCYAS WANSSGTI ELVKKGCWLDDFNCYDRQECVATEENPQVYFCCCEGNFCNER FTHLPEAG
予測される分子量	37 kDa including tags
領域	21 to 120
タグ	GST tag N-Terminus

### 特性

Our **Abpromise guarantee** covers the use of **ab114488** in the following tested applications.

The application notes include recommended starting dilutions; optimal dilutions/concentrations should be determined by the end user.

アプリケーション	ELISA SDS-PAGE Western blot
製品の状態	Liquid
備考	This product was previously labelled as Activin Receptor Type IIB.

### 前処理および保存

保存方法および安定性	Shipped on dry ice. Upon delivery aliquot and store at -80°C. Avoid freeze / thaw cycles.
------------	---

pH: 8.00

Constituents: 0.3% Glutathione, 0.79% Tris HCl

## 関連情報

### 機能

On ligand binding, forms a receptor complex consisting of two type II and two type I transmembrane serine/threonine kinases. Type II receptors phosphorylate and activate type I receptors which autophosphorylate, then bind and activate SMAD transcriptional regulators. Receptor for activin A, activin B and inhibin A.

### 関連疾患

Defects in ACVR2B are the cause of visceral heterotaxy autosomal type 4 (HTX4) [MIM:613751]. A form of visceral heterotaxy, a complex disorder due to disruption of the normal left-right asymmetry of the thoracoabdominal organs. It results in an abnormal arrangement of visceral organs, and a wide variety of congenital defects. Clinical features of visceral heterotaxy type 4 include dextrocardia, right aortic arch and a right-sided spleen, anomalies of the inferior and the superior vena cava, atrial ventricular canal defect with dextro-transposed great arteries, pulmonary stenosis, polysplenia and midline liver.

### 配列類似性

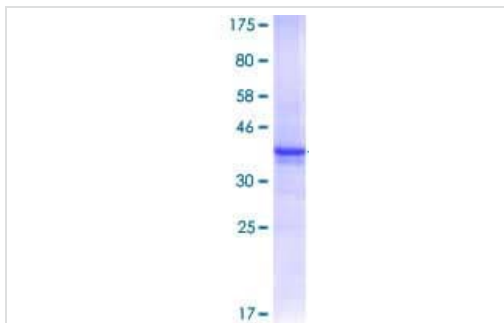
Belongs to the protein kinase superfamily. TKL Ser/Thr protein kinase family. TGFB receptor subfamily.

Contains 1 protein kinase domain.

### 細胞内局在

Membrane.

## 画像



SDS-PAGE - Recombinant Human Activin Receptor  
Type IIB/ACVR2B protein (ab114488)

12.5% SDS-PAGE showing ab114488 at approximately 36.63kDa stained with Coomassie Blue.

**Please note:** All products are "FOR RESEARCH USE ONLY. NOT FOR USE IN DIAGNOSTIC PROCEDURES"

## Our Abpromise to you: Quality guaranteed and expert technical support

- Replacement or refund for products not performing as stated on the datasheet
- Valid for 12 months from date of delivery
- Response to your inquiry within 24 hours
- We provide support in Chinese, English, French, German, Japanese and Spanish

- Extensive multi-media technical resources to help you
- We investigate all quality concerns to ensure our products perform to the highest standards

If the product does not perform as described on this datasheet, we will offer a refund or replacement. For full details of the Abpromise, please visit <https://www.abcam.co.jp/abpromise> or contact our technical team.

#### **Terms and conditions**

---

- Guarantee only valid for products bought direct from Abcam or one of our authorized distributors