

Product datasheet

Recombinant Human 14-3-3 Theta + Tau protein ab116444

画像数 1

製品の詳細

製品名	Recombinant Human 14-3-3 Theta + Tau protein
精製度	> 80 % Purified via His tag. ab116444 was purified via Ni ²⁺ -NTA agarose columns.
発現系	Escherichia coli
アクセッション番号	P27348
タンパク質長	Full length protein
Animal free	No
由来	Recombinant
生物種	Human
配列	MGSSHHHHHHSSGLVPRGSHMASMTGGQQMGRGSMEKTELIQ KAKLAEQA ERYDDMATCMKAVTEQGAELSNEERNLLSVAYKNVVGRRSA WRVISSIE QKTDTSKQLLIKDYREKVESELRSICTTVLELLDKYLIAN ATNPESKV FYLKMKGDYFRYLAEVACGDDRKQTIDNSQGAYQEAFDISKK EMQPTHPI RLGLALNFSVFYYEILNPELACTLAKTAFDEAIAELDTLNE DSYKDSTL IMQLLRDNLTLWTSDSAGEECDAAEGAEN
予測される分子量	31 kDa including tags
領域	1 to 245
タグ	His tag N-Terminus

特性

Our **Abpromise guarantee** covers the use of **ab116444** in the following tested applications.

The application notes include recommended starting dilutions; optimal dilutions/concentrations should be determined by the end user.

アプリケーション	Mass Spectrometry SDS-PAGE
質量分析	MALDI-TOF-TOF
製品の状態	Liquid

備考 ab116444 was alkylated, digested with trypsin and the mass of the resultant peptides determined by MADLI-TOF/TOF mass spectrometry. The peptides obtained gave 64 % sequence coverage of 14-3-3 tau + theta. Theoretical pI: 5.2

前処理および保存

保存方法および安定性 Shipped on dry ice. Upon delivery aliquot and store at -20°C. Avoid freeze / thaw cycles.
pH: 7.50
Constituents: 0.012% Benzamidine, 0.004% PMSF, 0.02% DTT, 0.6% HEPES, 50% Glycerol

関連情報

機能 Adapter protein implicated in the regulation of a large spectrum of both general and specialized signaling pathways. Binds to a large number of partners, usually by recognition of a phosphoserine or phosphothreonine motif. Binding generally results in the modulation of the activity of the binding partner.

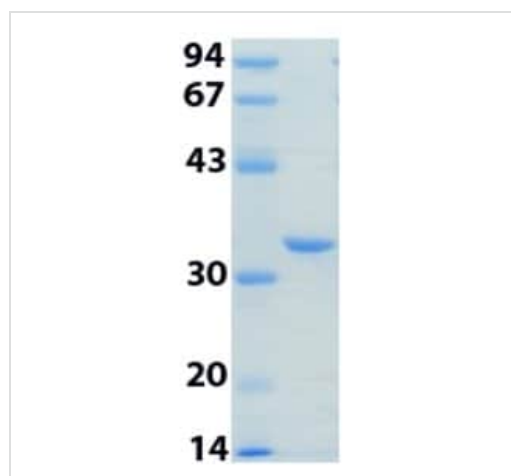
組織特異性 Abundantly expressed in brain, heart and pancreas, and at lower levels in kidney and placenta. Up-regulated in the lumbar spinal cord from patients with sporadic amyotrophic lateral sclerosis (ALS) compared with controls, with highest levels of expression in individuals with predominant lower motor neuron involvement.

配列類似性 Belongs to the 14-3-3 family.

翻訳後修飾 Ser-232 is probably phosphorylated by CK1.

細胞内局在 Cytoplasm. In neurons, axonally transported to the nerve terminals.

画像



12% SDS-PAGE gel showing ab116444.

SDS-PAGE - Recombinant Human 14-3-3 Theta +
Tau protein (ab116444)

Please note: All products are "FOR RESEARCH USE ONLY. NOT FOR USE IN DIAGNOSTIC PROCEDURES"

Our Abpromise to you: Quality guaranteed and expert technical support

- Replacement or refund for products not performing as stated on the datasheet
- Valid for 12 months from date of delivery
- Response to your inquiry within 24 hours

- We provide support in Chinese, English, French, German, Japanese and Spanish
- Extensive multi-media technical resources to help you
- We investigate all quality concerns to ensure our products perform to the highest standards

If the product does not perform as described on this datasheet, we will offer a refund or replacement. For full details of the Abpromise, please visit <https://www.abcam.co.jp/abpromise> or contact our technical team.

Terms and conditions

- Guarantee only valid for products bought direct from Abcam or one of our authorized distributors