

Recombinant Human 14-3-3 eta/YWHAH protein ab116442

画像数 1

製品の詳細

製品名	Recombinant Human 14-3-3 eta/YWHAH protein
精製度	> 80 % Purified via His tag. ab116442 was purified by Ni ²⁺ -NTA agarose
発現系	Escherichia coli
アクセッション番号	<u>Q04917</u>
タンパク質長	Full length protein
Animal free	No
由来	Recombinant
生物種	Human
配列	MGSSHHHHHHSSGLVPRGSHMASMTGGQQMGRGSMGDREQLL QRARLAEQ AERYDDMASAMKAVTELNEPLSNEDRNLLSVAYKNVVGARRS SWRVISSI EQKTMADGNEKKLEKVKAYREKIEKELETVCNDVLSLLDKFL IKNCNDFQ YESKVFYLMKGDYYRYLAEVASGEKKNSVVEASEAAYKEAF EISKEQMQ PTHPIRLGLALNFSVFYYEIQNAPEQACLLAKQAFDDAIAEL DTLNEDSY KDSTLIMQLLRDNLTLWTSDQQDEEAGEGN
予測される分子量	32 kDa including tags
領域	1 to 246
タグ	His tag N-Terminus

特性

Our **Abpromise guarantee** covers the use of **ab116442** in the following tested applications.

The application notes include recommended starting dilutions; optimal dilutions/concentrations should be determined by the end user.

アプリケーション	SDS-PAGE Mass Spectrometry
質量分析	MALDI-TOF-TOF
製品の状態	Liquid

備考	<p>ab116442 was alkylated, digested with trypsin and the mass of the resultant peptides determined by MADLI-TOF/TOF. The peptides obtained gave 67% sequence coverage of 14-3-3 eta/YWHAH. Theoretical pI: 5.3</p> <p>This product was previously labelled as 14-3-3 eta</p>
-----------	--

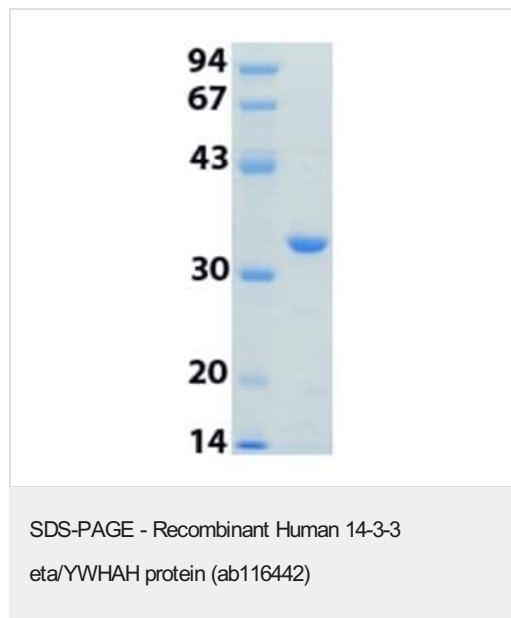
前処理および保存

保存方法および安定性	<p>Shipped on dry ice. Upon delivery aliquot and store at -80°C. Avoid freeze / thaw cycles.</p> <p>pH: 7.50</p> <p>Constituents: 0.012% Benzamidine, 0.003% PMSF, 0.02% DTT, 0.6% HEPES, 50% Glycerol</p>
-------------------	--

関連情報

機能	<p>Adapter protein implicated in the regulation of a large spectrum of both general and specialized signaling pathways. Binds to a large number of partners, usually by recognition of a phosphoserine or phosphothreonine motif. Binding generally results in the modulation of the activity of the binding partner.</p>
組織特異性	<p>Expressed mainly in the brain and present in other tissues albeit at lower levels.</p>
配列類似性	<p>Belongs to the 14-3-3 family.</p>

画像



12 % SDS-PAGE gel showing ab116442.

Please note: All products are "FOR RESEARCH USE ONLY. NOT FOR USE IN DIAGNOSTIC PROCEDURES"

Our Abpromise to you: Quality guaranteed and expert technical support

- Replacement or refund for products not performing as stated on the datasheet

- Valid for 12 months from date of delivery
- Response to your inquiry within 24 hours
- We provide support in Chinese, English, French, German, Japanese and Spanish
- Extensive multi-media technical resources to help you
- We investigate all quality concerns to ensure our products perform to the highest standards

If the product does not perform as described on this datasheet, we will offer a refund or replacement. For full details of the Abpromise, please visit <https://www.abcam.co.jp/abpromise> or contact our technical team.

Terms and conditions

- Guarantee only valid for products bought direct from Abcam or one of our authorized distributors