

Native rabbit Plasmin protein ab92786

画像数 1

製品の詳細

製品名	Native rabbit Plasmin protein
精製度	> 95 % SDS-PAGE. ab92786 is prepared from plasminogen by activation with immobilized Human uPA.
発現系	Native
タンパク質長	Full length protein
Animal free	No
由来	Native
生物種	Rabbit

特性

Our **Abpromise guarantee** covers the use of **ab92786** in the following tested applications.

The application notes include recommended starting dilutions; optimal dilutions/concentrations should be determined by the end user.

アプリケーション	SDS-PAGE
製品の状態	Liquid
備考	Plasmin will undergo rapid autolysis in the absence of Protease inhibitors such as benzamide, and should be used quickly after thawing before significant activity losses occur.

前処理および保存

保存方法および安定性	Shipped on dry ice. Upon delivery aliquot and store at -80°C. Avoid freeze / thaw cycles. pH: 7.40 Constituents: 2.38% HEPES, 0.58% Sodium chloride This product is an active protein and may elicit a biological response in vivo, handle with caution.
------------	---

関連情報

機能	Plasmin dissolves the fibrin of blood clots and acts as a proteolytic factor in a variety of other processes including embryonic development, tissue remodeling, tumor invasion, and inflammation. In ovulation, weakens the walls of the Graafian follicle. It activates the urokinase-type plasminogen activator, collagenases and several complement zymogens, such as C1 and C5.
----	--

Cleavage of fibronectin and laminin leads to cell detachment and apoptosis. Also cleaves fibrin, thrombospondin and von Willebrand factor. Its role in tissue remodeling and tumor invasion may be modulated by CSPG4. Binds to cells.

Angiostatin is an angiogenesis inhibitor that blocks neovascularization and growth of experimental primary and metastatic tumors in vivo.

組織特異性

Present in plasma and many other extracellular fluids. It is synthesized in the liver.

関連疾患

Plasminogen deficiency

配列類似性

Belongs to the peptidase S1 family. Plasminogen subfamily.

Contains 5 kringle domains.

Contains 1 PAN domain.

Contains 1 peptidase S1 domain.

ドメイン

Kringle domains mediate interaction with CSPG4.

翻訳後修飾

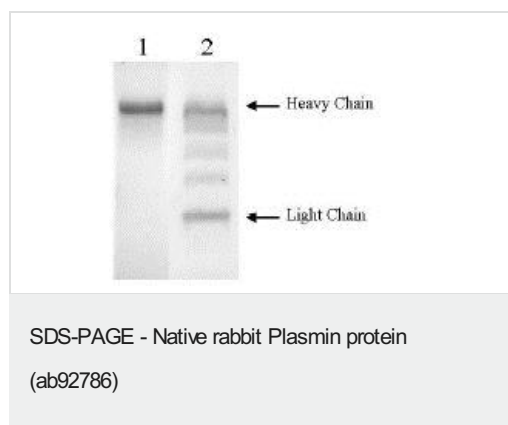
N-linked glycan contains N-acetylglucosamine and sialic acid. O-linked glycans consist of Gal-GalNAc disaccharide modified with up to 2 sialic acid residues (microheterogeneity).

In the presence of the inhibitor, the activation involves only cleavage after Arg-580, yielding two chains held together by two disulfide bonds. In the absence of the inhibitor, the activation involves additionally the removal of the activation peptide.

細胞内局在

Secreted. Locates to the cell surface where it is proteolytically cleaved to produce the active plasmin. Interaction with HRG tethers it to the cell surface.

画像



10% SDS-PAGE

Lane 1: Plasmin (Non-reduced)

Lane 2: Plasmin (Reduced)

Please note: All products are "FOR RESEARCH USE ONLY. NOT FOR USE IN DIAGNOSTIC PROCEDURES"

Our Abpromise to you: Quality guaranteed and expert technical support

- Replacement or refund for products not performing as stated on the datasheet
- Valid for 12 months from date of delivery
- Response to your inquiry within 24 hours
- We provide support in Chinese, English, French, German, Japanese and Spanish
- Extensive multi-media technical resources to help you
- We investigate all quality concerns to ensure our products perform to the highest standards

If the product does not perform as described on this datasheet, we will offer a refund or replacement. For full details of the Abpromise, please visit <https://www.abcam.co.jp/abpromise> or contact our technical team.

Terms and conditions

- Guarantee only valid for products bought direct from Abcam or one of our authorized distributors