

Native Human Vitronectin/S-Protein (Biotin) ab92639

画像数 2

製品の詳細

製品名	Native Human Vitronectin/S-Protein (Biotin)
精製度	> 95 % SDS-PAGE. ab92639 is prepared from fresh Human plasma using non-denaturing chromatography, then biotin labeled at primary amines. Purity is > 98% pure by SDS-PAGE.
発現系	Native
タンパク質長	Full length protein
Animal free	No
由来	Native
生物種	Human
標識	Biotin

特性

Our **Abpromise guarantee** covers the use of **ab92639** in the following tested applications.

The application notes include recommended starting dilutions; optimal dilutions/concentrations should be determined by the end user.

アプリケーション	Western blot
	SDS-PAGE

製品の状態	Liquid
-------	--------

前処理および保存

保存方法および安定性	Shipped on dry ice. Upon delivery aliquot and store at -80°C. Avoid freeze / thaw cycles. pH: 7.40 Constituents: 0.82% Sodium phosphate, 0.58% Sodium chloride
------------	--

関連情報

機能	Vitronectin is a cell adhesion and spreading factor found in serum and tissues. Vitronectin interact with glycosaminoglycans and proteoglycans. Is recognized by certain members of the integrin family and serves as a cell-to-substrate adhesion molecule. Inhibitor of the membrane-damaging effect of the terminal cytolytic complement pathway.
----	--

組織特異性

Somatomedin-B is a growth hormone-dependent serum factor with protease-inhibiting activity.

配列類似性

Plasma.

Contains 4 hemopexin repeats.

Contains 1 SMB (somatomedin-B) domain.

ドメイン

The SMB domain mediates interaction with SERPINE1/PAI1. The heparin-binding domain mediates interaction with insulin.

翻訳後修飾

Sulfated on 2 tyrosine residues.

N- and O-glycosylated.

Phosphorylation on Thr-69 and Thr-76 favors cell adhesion and spreading.

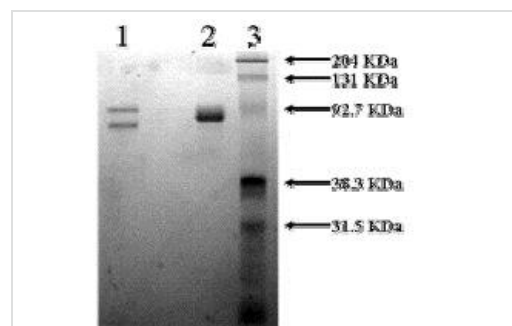
It has been suggested that the active SMB domain may be permitted considerable disulfide bond heterogeneity or variability, thus two alternate disulfide patterns based on 3D structures are described with 1 disulfide bond conserved in both.

Phosphorylation sites are present in the extracellular medium.

細胞内局在

Secreted, extracellular space.

画像



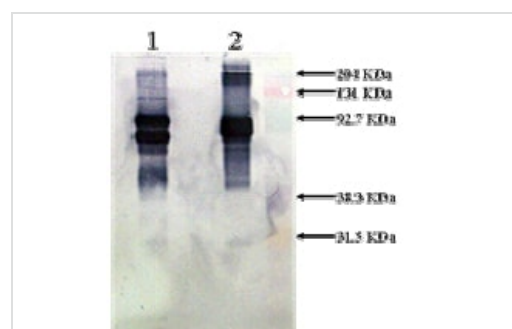
SDS-PAGE - Native Human Vitronectin/S-Protein
(Biotin) (ab92639)

10% SDS-PAGE

Lane 1: Vitronectin/S-Protein(2 ug) Reduced

Lane 2: Vitronectin/S-Protein (2 ug) Non-Reduced

Lane 3: Prestained Standard



Western blot - Native Human Vitronectin/S-Protein
(Biotin) (ab92639)

Lane 1 : anti-Vitronectin/S-Protein Avidin-AP at 1/3000 dilution

Lane 2 : anti-Vitronectin/S-Protein Avidin-AP at 1/3000 dilution

Lane 1 : ab92639 (Reduced)

Lane 2 : ab92639 (Non-reduced)

Lysates/proteins at 2 µg per lane.

Observed band size: 75 kDa

Please note: All products are "FOR RESEARCH USE ONLY. NOT FOR USE IN DIAGNOSTIC PROCEDURES"

Our Abpromise to you: Quality guaranteed and expert technical support

- Replacement or refund for products not performing as stated on the datasheet
- Valid for 12 months from date of delivery
- Response to your inquiry within 24 hours

- We provide support in Chinese, English, French, German, Japanese and Spanish
- Extensive multi-media technical resources to help you
- We investigate all quality concerns to ensure our products perform to the highest standards

If the product does not perform as described on this datasheet, we will offer a refund or replacement. For full details of the Abpromise, please visit <https://www.abcam.co.jp/abpromise> or contact our technical team.

Terms and conditions

- Guarantee only valid for products bought direct from Abcam or one of our authorized distributors