

Native Human Serum Albumin protein (Biotin) ab8033

1 References [画像数 1](#)

製品の詳細

製品名	Native Human Serum Albumin protein (Biotin)
発現系	Native
アクセッション番号	<u>P02768</u>
タンパク質長	Full length protein
Animal free	No
由来	Native
生物種	Human
予測される分子量	69 kDa
標識	Biotin
製品の詳細	Native Human Human Serum Albumin protein (Biotin)

特性

Our **Abpromise guarantee** covers the use of **ab8033** in the following tested applications.

The application notes include recommended starting dilutions; optimal dilutions/concentrations should be determined by the end user.

アプリケーション	Dot blot ELISA Immunomicroscopy Western blot
製品の状態	Lyophilized
備考	Disclaimer Note-Human No test method can provide total assurance that the hepatitis B virus, hepatitis C virus, human immunodeficiency virus, or any other infectious agents are absent. Thus, all blood products, including purified proteins derived from human blood sources, should be handled at Biosafety Level 2 as recommended by the CDC\NIH manual entitled Biosafety in Microbiological and Biomedical Laboratories for potentially infectious human serum, blood specimens or proteins derived from same. Source material for the human blood product supplied to your facility has been tested for the detection of HIV antibody, Hepatitis B surface antigen, antibody to Hepatitis C, HIV 1 antigen(s), antibody to HTLV - I/II, and syphilis by FDA guidelines. All units were found to be non-reactive/negative for these tests. All human blood source material is collected in FDA licensed centers and is tested with FDA approved test kits.

Purification Technique:

This product was prepared from normal serum delipidation a multi-stage process including selective precipitation. Assay by immunoelectrophoresis resulted in a single precipitin arc against anti-biotin, anti-Human Albumin and anti-Human Serum.

前処理および保存

保存方法および安定性

Shipped at 4°C. Store at +4°C short term (1-2 weeks). Upon delivery aliquot. Store at -20°C or -80°C. Avoid freeze / thaw cycle.

Constituents: 0.42% Potassium phosphate, 0.87% Sodium chloride

再構成

Restore with 1.0 ml of deionized water (or equivalent). aliquot contents and freeze at -20° C or below. Avoid cycles of freezing and thawing. Centrifuge product if not completely clear after standing at room temperature. This product is stable for several weeks at 4° C as an undiluted liquid. Dilute only prior to immediate use. Stabiliser: 10 mg/ml Polyethylene Glycol (PEG-8000). Preservative: 0.01% (w/v) Sodium Azide.

関連情報

機能

Serum albumin, the main protein of plasma, has a good binding capacity for water, Ca(2+), Na(+), K(+), fatty acids, hormones, bilirubin and drugs. Its main function is the regulation of the colloidal osmotic pressure of blood. Major zinc transporter in plasma, typically binds about 80% of all plasma zinc.

組織特異性

Plasma.

関連疾患

Defects in ALB are a cause of familial dysalbuminemic hyperthyroxinemia (FDH) [MIM:103600]. FDH is a form of euthyroid hyperthyroxinemia that is due to increased affinity of ALB for T(4). It is the most common cause of inherited euthyroid hyperthyroxinemia in Caucasian population.

配列類似性

Belongs to the ALB/AFP/VDB family.
Contains 3 albumin domains.

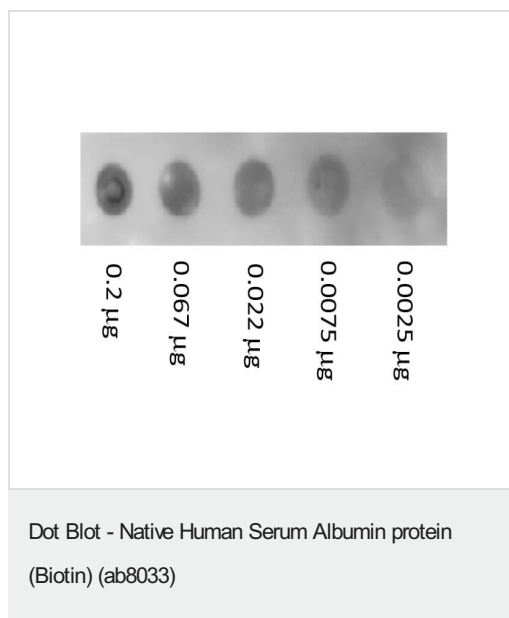
翻訳後修飾

Kenitra variant is partially O-glycosylated at Thr-620. It has two new disulfide bonds Cys-600 to Cys-602 and Cys-601 to Cys-606.
Glycated in diabetic patients.
Phosphorylation sites are present in the extracellular medium.
Acetylated on Lys-223 by acetylsalicylic acid.

細胞内局在

Secreted.

画像



Dot Blot - Native Human Serum Albumin protein (Biotin) (ab8033).

A three-fold serial dilution of ab8033 starting at 200ng was spotted onto 0.45 µm nitrocellulose and blocked in 1% BSA-TTBS for 30 min at 20°C. An HRP conjugated Streptavidin was incubated at 1/40,000 for 30 min at 20°C and imaged using the Bio-Rad VersaDoc® 4000 MP.

Please note: All products are "FOR RESEARCH USE ONLY. NOT FOR USE IN DIAGNOSTIC PROCEDURES"

Our Abpromise to you: Quality guaranteed and expert technical support

- Replacement or refund for products not performing as stated on the datasheet
- Valid for 12 months from date of delivery
- Response to your inquiry within 24 hours
- We provide support in Chinese, English, French, German, Japanese and Spanish
- Extensive multi-media technical resources to help you
- We investigate all quality concerns to ensure our products perform to the highest standards

If the product does not perform as described on this datasheet, we will offer a refund or replacement. For full details of the Abpromise, please visit <https://www.abcam.co.jp/abpromise> or contact our technical team.

Terms and conditions

- Guarantee only valid for products bought direct from Abcam or one of our authorized distributors