

# Native human Prethrombin 2 protein ab62535

## 1 References [画像数 1](#)

### 製品の詳細

---

製品名	Native human Prethrombin 2 protein
生理活性	Activity was measured by clotting and/or chromogenic substrate assay, following conversion of prothrombin to thrombin.
精製度	> 95 % Ion Exchange Chromatography. Prepared from fresh frozen human plasma. Purity was determined by SDS-PAGE analysis.
発現系	Native
タンパク質長	Full length protein
Animal free	No
由来	Native
生物種	Human

### 特性

---

Our **Abpromise guarantee** covers the use of **ab62535** in the following tested applications.

The application notes include recommended starting dilutions; optimal dilutions/concentrations should be determined by the end user.

アプリケーション	Functional Studies SDS-PAGE
----------	--------------------------------

製品の状態	Liquid
-------	--------

### 前処理および保存

---

保存方法および安定性	Shipped at 4°C. Upon delivery aliquot and store at -20°C. Avoid freeze / thaw cycles. Constituents: 50% Glycerol, 50% Water  50% H2O  This product is an active protein and may elicit a biological response in vivo, handle with caution.
------------	---

### 関連情報

---

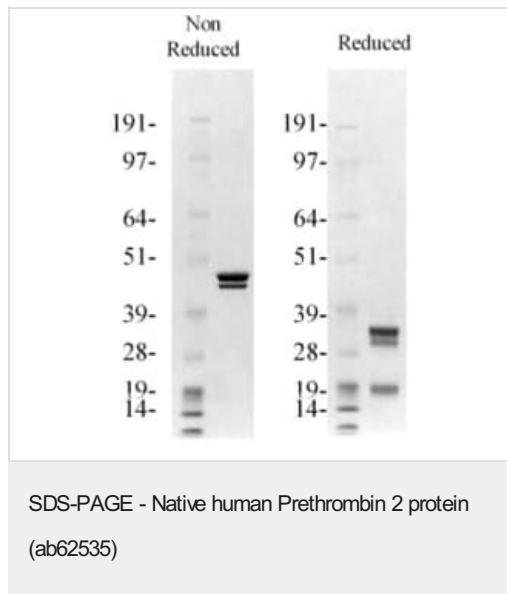
関連性	Prethrombin 2, the smallest single-chain immediate precursor of a-thrombin (corresponding to
-----	--

residues Thr272 to Glu579 in prothrombin), has one glycosylation site at Asn373 and four disulfide bonds, Cys293-Cys439, Cys348-Cys364, Cys493-Cys507, and Cys521-Cys551. alpha-Thrombin can be derived from prothrombin by two pathways, each of which generates different intermediate products. In one pathway, human prothrombin is converted relatively slowly to alpha-thrombin in the presence of factor Xa and Ca<sup>2+</sup> ions by initial cleavage at residue (Arg) 271/(Thr) 272 with consequent production of fragment 1.2 and prethrombin 2. Prethrombin 2 is then cleaved at R 320 with consequent generation of alpha-thrombin. In the other pathway, initial cleavage at R 320 yields an intermediate product, meizothrombin.

細胞内局在

Secreted, extra cellular space

## 画像



Novex 4-12% Bis-Tris

1 µg per lane

MOPS

**Please note:** All products are "FOR RESEARCH USE ONLY. NOT FOR USE IN DIAGNOSTIC PROCEDURES"

## Our Abpromise to you: Quality guaranteed and expert technical support

- Replacement or refund for products not performing as stated on the datasheet
- Valid for 12 months from date of delivery
- Response to your inquiry within 24 hours
- We provide support in Chinese, English, French, German, Japanese and Spanish
- Extensive multi-media technical resources to help you
- We investigate all quality concerns to ensure our products perform to the highest standards

If the product does not perform as described on this datasheet, we will offer a refund or replacement. For full details of the Abpromise, please visit <https://www.abcam.co.jp/abpromise> or contact our technical team.

## Terms and conditions

- Guarantee only valid for products bought direct from Abcam or one of our authorized distributors