

Native human Plasminogen protein (Active) ab92924

2 References 画像数 1

製品の詳細

製品名	Native human Plasminogen protein (Active)
生理活性	No plasmin activity detected with the chromogenic substrate S-2251. >98% conversion to plasmin is observed upon activation with uPA.
精製度	> 95 % SDS-PAGE.
発現系	Native
アクセッション番号	<u>P00747</u>
タンパク質長	Full length protein
Animal free	No
由来	Native
生物種	Human
配列	

EPLDDYVNTQ GASLFSVTKK QLGAGSIEEC
AAKCEEDEEF TCRAFQYHSK EQQCVIMAEN
RKSSIIIRMV DVVLFEEKVY LSECKTGNGK
NYRGTMSTTK NGITCQKWSS TSPHRPRFSP
ATHPSEGLEE NYCRNPDNDP QGPWCYTDDP
EKRYDYCDIL ECEEECMHCS GENYDGKISK
TMSGLECAW DSQSPHAGY IPSKFVNKNL
KKNYCRNPDR ELRPWCFTTD PNKRWELCDI
PRCTTPPPSS GPTYQCLKGT GENYRGNVAV
TVSGHTCQHW SAQTPHTHNR TPENFPCKNL
DENYCRNPDG KRAPWCHTTN SQVRWEYCKI
PSCDSSPVST EQLAPTAPPE LTPVVQDCYH
GDGQSYRGTS STTTTGKKCQ SWSSMTPHRH
QKTPENYPNA GLTMNYCRNP DADKGPWCFT
TDPSVRWEYC NLKKCSGTEA SVVAPPPVVL
LPDVETPSEE DCMFGNGKGY RGKRATTVTG
TPCQDWAAQE PHRHSIFTPE TNPRAGLEKN
YCRNPDGDVG GPWCYTTPNR KLYDYCDVPQ
CAAPSFDCGK PQVEPKKCPG RVVGGCVAHP
HWPWQVSLR TRFGMHFCGG TLISPEWVLT
AAHCLEKSPR PSSYKVILGA HQEVNLEPHV
QEIEVSRLFL EPTRKDIALL KLSSPAVITD

KVIPACLPSP NYVVADRTEC FITGWGETQG
TFGAGLLKEA QLPVIENKVC NRYEFLNGRV
QSTELCAGHL AGGTDSCQGD SGGPLVCFEK
DKYILQGVTS WGLGCARPKNK PGVYVRVSRF
VTWIEGVMRN N

予測される分子量 92 kDa
領域 20 to 810
配列の追加情報 (Gene ID: 5340) Full length mature protein, without the signal peptide.

特性

Our **Abpromise guarantee** covers the use of **ab92924** in the following tested applications.

The application notes include recommended starting dilutions; optimal dilutions/concentrations should be determined by the end user.

アプリケーション SDS-PAGE
製品の状態 Liquid
備考 ab92924 is purified from Human plasma that is tested and found negative for all communicable diseases, including HIV1, HIV2, Hepatitis Surface antigen and HCV.
Solubility: > 2 mg/mL
Extinction coefficient: Epsilon^{0.1%}= 1.69
Prepared from fresh human plasma by immobilized lysine chromatography.
Ultraviolet: Absorbance (280nm) = 16.56

前処理および保存

保存方法および安定性 Shipped on dry ice. Upon delivery aliquot and store at -80°C. Avoid freeze / thaw cycles.
pH: 7.40
Constituents: 2.38% HEPES, 0.58% Sodium chloride
This product is an active protein and may elicit a biological response in vivo, handle with caution.

関連情報

機能 Plasmin dissolves the fibrin of blood clots and acts as a proteolytic factor in a variety of other processes including embryonic development, tissue remodeling, tumor invasion, and inflammation. In ovulation, weakens the walls of the Graafian follicle. It activates the urokinase-type plasminogen activator, collagenases and several complement zymogens, such as C1 and C5. Cleavage of fibronectin and laminin leads to cell detachment and apoptosis. Also cleaves fibrin, thrombospondin and von Willebrand factor. Its role in tissue remodeling and tumor invasion may be modulated by CSPG4. Binds to cells.
Angiostatin is an angiogenesis inhibitor that blocks neovascularization and growth of experimental primary and metastatic tumors in vivo.

組織特異性 Present in plasma and many other extracellular fluids. It is synthesized in the liver.

関連疾患 Defects in PLG are a cause of susceptibility to thrombosis (THR) [MIM:188050]. It is a multifactorial disorder of hemostasis characterized by abnormal platelet aggregation in response to various agents and recurrent thrombi formation.
Defects in PLG are the cause of plasminogen deficiency (PLGD) [MIM:217090]. PLGD is

characterized by decreased serum plasminogen activity. Two forms of the disorder are distinguished: type 1 deficiency is additionally characterized by decreased plasminogen antigen levels and clinical symptoms, whereas type 2 deficiency, also known as dysplasminogenemia, is characterized by normal, or slightly reduced antigen levels, and absence of clinical manifestations. Plasminogen deficiency type 1 results in markedly impaired extracellular fibrinolysis and chronic mucosal pseudomembranous lesions due to subepithelial fibrin deposition and inflammation. The most common clinical manifestation of type 1 deficiency is ligneous conjunctivitis in which pseudomembranes formation on the palpebral surfaces of the eye progresses to white, yellow-white, or red thick masses with a wood-like consistency that replace the normal mucosa.

配列類似性

Belongs to the peptidase S1 family. Plasminogen subfamily.
Contains 5 kringle domains.
Contains 1 PAN domain.
Contains 1 peptidase S1 domain.

ドメイン

Kringle domains mediate interaction with CSPG4.

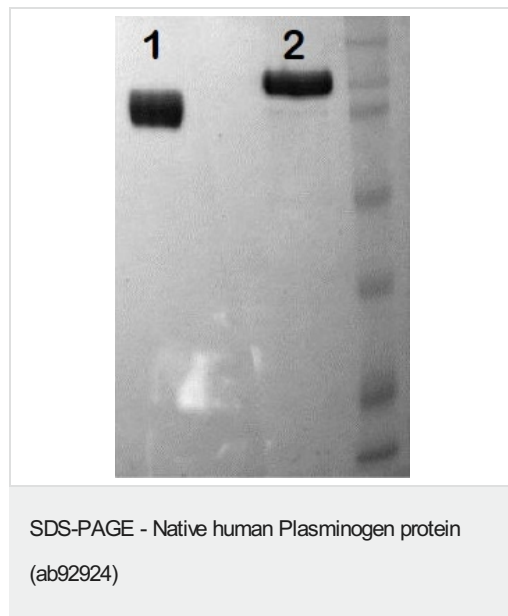
翻訳後修飾

N-linked glycan contains N-acetylglucosamine and sialic acid. O-linked glycans consist of Gal-GalNAc disaccharide modified with up to 2 sialic acid residues (microheterogeneity). In the presence of the inhibitor, the activation involves only cleavage after Arg-580, yielding two chains held together by two disulfide bonds. In the absence of the inhibitor, the activation involves additionally the removal of the activation peptide.

細胞内局在

Secreted. Locates to the cell surface where it is proteolytically cleaved to produce the active plasmin. Interaction with HRG tethers it to the cell surface.

画像



10% Tris-HCl SDS-PAGE.

Lane 1: 5 ug, non-reduced ab92924.

Lane 2: 5 ug, reduced ab92924.

Please note: All products are "FOR RESEARCH USE ONLY. NOT FOR USE IN DIAGNOSTIC PROCEDURES"

Our Abpromise to you: Quality guaranteed and expert technical support

- Replacement or refund for products not performing as stated on the datasheet
- Valid for 12 months from date of delivery

- Response to your inquiry within 24 hours
- We provide support in Chinese, English, French, German, Japanese and Spanish
- Extensive multi-media technical resources to help you
- We investigate all quality concerns to ensure our products perform to the highest standards

If the product does not perform as described on this datasheet, we will offer a refund or replacement. For full details of the Abpromise, please visit <https://www.abcam.co.jp/abpromise> or contact our technical team.

Terms and conditions

- Guarantee only valid for products bought direct from Abcam or one of our authorized distributors