

# Native Human IgM protein ab91117

[3 References](#) [画像数 1](#)

### 製品の詳細

製品名 Native Human IgM protein

精製度 > 95 % SDS-PAGE.

発現系 Native

アクセッション番号 **P01871**

タンパク質長 Full length protein

Animal free No

由来 Native

生物種 Human

配列

```
GSASAPTLFPLVSCENSPTSSTSSVAVGCLAQDFLPDSITFSW
KYKNNSDI
SSTRGFPSVLRGGKYAATSQVLLPSKDVMQGTDEHVVCKVQH
PNGNKEKN
VPLPVIAELPPKVSFVPPRDGFFGNPRKSKLICQATGFSPR
QIQVSWLR
EGKQVGSVTTDQVQAEAKESGPTTYKVTSTLTIKESDWLGQ
SMFTCRVD
HRGLTFQQNASSMCPDQDTAIRVFAIPPSFASIFLTKSTKL
TCLVTDLT
TYDSVTISWTRQNGEAVKTHTNISESHPNATFSAVGEASICE
DDWNSGER
FTCTVHTDLPSPLKQTI SRPKGVALHRPDVYLLPPAREQLN
LRESATIT
CLVTGFSPADV FVQWMQRGQPLSPEKYVTSAPMPEPQAPGRY
FAHSILTV
SEEEWNTGETYTCVVAHEALPNRV TERTVDKSTGKPTLYNVS
LVMSDTAG TCY
```

予測される分子量 950 kDa

### 特性

Our **Abpromise guarantee** covers the use of **ab91117** in the following tested applications.

The application notes include recommended starting dilutions; optimal dilutions/concentrations should be determined by the end user.

## アプリケーション

SDS-PAGE

## 製品の状態

Liquid

## 備考

ab91117 is IgM purified from normal plasma. For IgM purified from myeloma plasma, please refer to **ab90348**.

Protein Determination: Extinction Coefficient (E) 0.1% at 280nm, 1cm pathway = 1.18. Prepared from plasma shown to be non reactive for HBsAg, anti-HCV, anti-HBc, and negative for anti-HIV 1 & 2 by FDA approved tests.

## 前処理および保存

---

### 保存方法および安定性

Shipped on Dry Ice. Upon delivery aliquot. Store at -20°C. Avoid freeze / thaw cycle.

pH: 8.00

Preservative: 0.05% Sodium azide

Constituents: 0.605% Tris, 1.16% Sodium chloride

## 関連情報

---

### 関連性

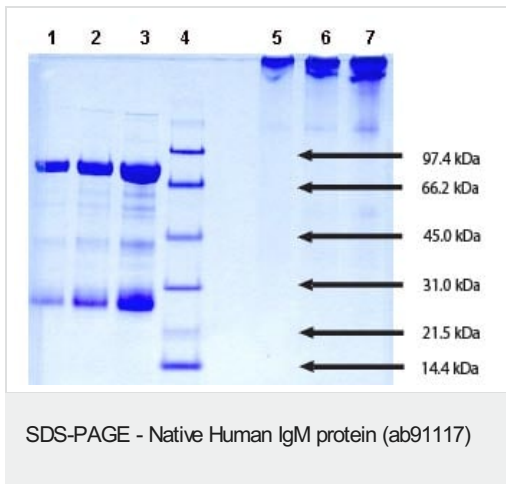
IgM normally constitutes about 10% of serum immunoglobulins. IgM antibody is prominent in early immune responses to most antigens and predominates in certain antibody responses such as 'natural' blood group antibodies. IgM (with IgD) is the major immunoglobulin expressed on the surface of B cells. The gene for the mu constant region contains four domains separated by short intervening sequences. Class specific anti immunoglobulin antibodies are useful for: The characterization of malignant B cell proliferations. All but acute lymphocytic leukemias share either surface or intra cytoplasmic Ig with an isotypic restriction, which suggest the monoclonal nature of the cell population. Most of the chronic lymphocytic leukemias, non Hodgkin lymphomas and Burkitt's lymphoma bear surface IgM, whereas plasmocytes from Waldenström's disease bear intracytoplasmic IgM. The other isotypes are less frequently found. On the other hand multiple myelomas are usually of the IgG or IgA type. Characterization of plasma cells in inflammatory conditions: Plasma cell typing can be of use for the classification of intestinal inflammatory conditions such as inflammatory bowel disease and allergic conditions. In the latter a specific increase in the number of IgE plasma cells can be demonstrated.

### 細胞内局在

Isoform 1: Secreted. During differentiation, B lymphocytes switch from expression of membrane bound IgM to secretion of IgM. Isoform 2: Cell membrane; Single pass type I membrane protein.

## 画像

---



SDS-PAGE: 4-12% Bis-Tris gel

Lane 1. 5 µg IgM (reduced/heated)

Lane 2. 10 µg IgM (reduced/heated)

Lane 3. 20 µg IgM (reduced/heated)

Lane 4. Molecular weight markers

Lane 5. 5 µg IgM (non-reduced/no heat)

Lane 6. 10 µg IgM (non-reduced/no heat)

Lane 7. 20 µg IgM (non-reduced/no heat)

**Please note:** All products are "FOR RESEARCH USE ONLY. NOT FOR USE IN DIAGNOSTIC PROCEDURES"

### Our Abpromise to you: Quality guaranteed and expert technical support

- Replacement or refund for products not performing as stated on the datasheet
- Valid for 12 months from date of delivery
- Response to your inquiry within 24 hours
- We provide support in Chinese, English, French, German, Japanese and Spanish
- Extensive multi-media technical resources to help you
- We investigate all quality concerns to ensure our products perform to the highest standards

If the product does not perform as described on this datasheet, we will offer a refund or replacement. For full details of the Abpromise, please visit <https://www.abcam.co.jp/abpromise> or contact our technical team.

### Terms and conditions

- Guarantee only valid for products bought direct from Abcam or one of our authorized distributors