

### Native Human IgG2 protein ab90284

8 References 画像数 1

#### 製品の詳細

製品名	Native Human IgG2 protein
生理活性	Shown to be non reactive for HBsAg, anti-HCV, anti-HBc, and negative for anti-HIV 1 and 2 by FDA approved tests.
精製度	> 95 % SDS-PAGE.
発現系	Native
タンパク質長	Full length protein
Animal free	No
由来	Native
生物種	Human
予測される分子量	146 kDa
配列の追加情報	Prepared from myeloma plasma.

#### 特性

Our **Abpromise guarantee** covers the use of **ab90284** in the following tested applications.

The application notes include recommended starting dilutions; optimal dilutions/concentrations should be determined by the end user.

アプリケーション	SDS-PAGE
製品の状態	Liquid
備考	Extinction Coefficient (E) 0.1% at 280nm =1.36. Shown to be non reactive for HBsAg, anti-HCV, anti-HBc, and negative for anti-HIV 1 and 2 by FDA approved tests.

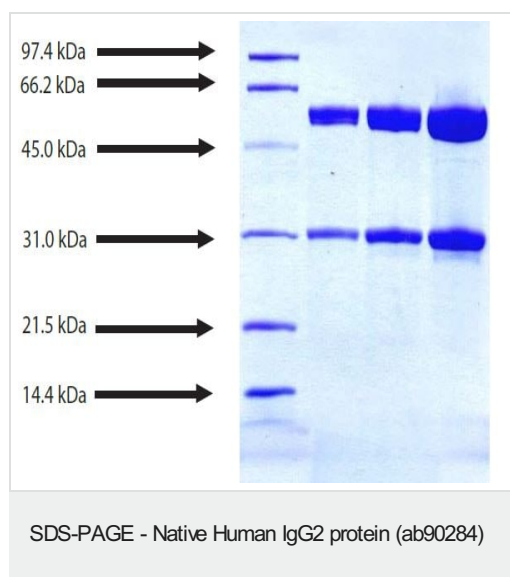
#### 前処理および保存

保存方法および安定性	Shipped on Dry Ice. Upon delivery aliquot. Store at -80°C. Avoid freeze / thaw cycle. pH: 7.40 Preservative: 0.05% Sodium azide Constituents: 0.9% Sodium chloride, 0.3% Sodium phosphate monobasic, monohydrate, 98% Water
------------	--

## 関連情報

関連性	There are four IgG subclasses (IgG1, 2, 3 and 4) in humans, named in order of their abundance in serum (IgG1 being the most abundant). IgG2 is the only IgG subclass which passes through the placenta at a level generally lower than that found in the mother. A deficiency of IgG2 indicates a poor antibody response to bacterial polysaccharides and can lead to increased susceptibility to infections caused by encapsulated bacteria.
細胞内局在	Secreted

## 画像



SDS PAGE analysis ab90284 under reduced/heated conditions.

Lane 1: LMW Standard;

Lane 2: 5µg ab90284;

Lane 3 10µg ab90284;

Lane 4 20µg ab90284.

**Please note:** All products are "FOR RESEARCH USE ONLY. NOT FOR USE IN DIAGNOSTIC PROCEDURES"

## Our Abpromise to you: Quality guaranteed and expert technical support

- Replacement or refund for products not performing as stated on the datasheet
- Valid for 12 months from date of delivery
- Response to your inquiry within 24 hours
- We provide support in Chinese, English, French, German, Japanese and Spanish
- Extensive multi-media technical resources to help you
- We investigate all quality concerns to ensure our products perform to the highest standards

If the product does not perform as described on this datasheet, we will offer a refund or replacement. For full details of the Abpromise, please visit <https://www.abcam.co.jp/abpromise> or contact our technical team.

## Terms and conditions

- Guarantee only valid for products bought direct from Abcam or one of our authorized distributors