

Native Human Factor XIIIa protein (Active) ab62412

画像数 1

製品の詳細

製品名	Native Human Factor XIIIa protein (Active)
生理活性	This product has an activity range of 39 U/mg to 200 U/mg
精製度	> 95 % Ion Exchange Chromatography. Plasma FXIIIa was generated by cleavage of homogenous plasma FXIII by alpha-thrombin, in the presence of EDTA. This product was then purified by ion and affinity chromatography.
発現系	Native
タンパク質長	Full length protein
Animal free	No
由来	Native
生物種	Human

特性

Our **Abpromise guarantee** covers the use of **ab62412** in the following tested applications.

The application notes include recommended starting dilutions; optimal dilutions/concentrations should be determined by the end user.

アプリケーション	SDS-PAGE
製品の状態	Liquid
備考	Enzymatic FXIIIa is composed of A2'B2. Ab62412 is the active, enzymatic tetrameric form (A2'B2) in absence of calcium ions. In contrast to the inactive tetrameric FXIII (A2B2), ab62412 has been activated by thrombin.

前処理および保存

保存方法および安定性	Shipped at 4°C. Upon delivery aliquot and store at -20°C. Avoid freeze / thaw cycles. Constituents: 0.0146% EDTA, 50% Glycerol This product is an active protein and may elicit a biological response in vivo, handle with caution.
------------	---

関連情報

機能	Factor XIII is activated by thrombin and calcium ion to a transglutaminase that catalyzes the
----	---

formation of gamma-glutamyl-epsilon-lysine cross-links between fibrin chains, thus stabilizing the fibrin clot. Also cross-link alpha-2-plasmin inhibitor, or fibronectin, to the alpha chains of fibrin.

関連疾患

Defects in F13A1 are the cause of factor XIII subunit A deficiency (FA13AD) [MIM:613225]. FA13AD is an autosomal recessive disorder characterized by a life-long bleeding tendency, impaired wound healing and spontaneous abortion in affected women.

配列類似性

Belongs to the transglutaminase superfamily. Transglutaminase family.

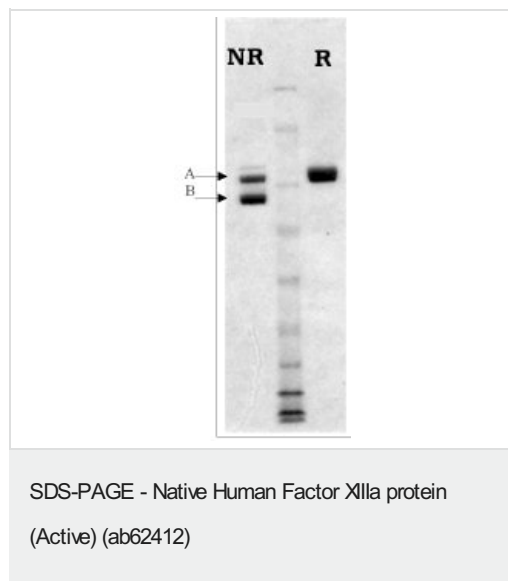
翻訳後修飾

The activation peptide is released by thrombin.

細胞内局在

Cytoplasm. Secreted. Secreted into the blood plasma. Cytoplasmic in most tissues, but also secreted in the blood plasma.

画像



Lane 1 : Non-reduced Factor XIIIa protein (ab62412) at 1 µg
Lane 2 : Molecular weight standard
Lane 3 : Reduced Factor XIIIa protein (ab62412) at 1 µg Notes: In the non-reduced sample the A chain shifts down toward the B chain following activation.

Please note: All products are "FOR RESEARCH USE ONLY. NOT FOR USE IN DIAGNOSTIC PROCEDURES"

Our Abpromise to you: Quality guaranteed and expert technical support

- Replacement or refund for products not performing as stated on the datasheet
- Valid for 12 months from date of delivery
- Response to your inquiry within 24 hours
- We provide support in Chinese, English, French, German, Japanese and Spanish
- Extensive multi-media technical resources to help you
- We investigate all quality concerns to ensure our products perform to the highest standards

If the product does not perform as described on this datasheet, we will offer a refund or replacement. For full details of the Abpromise, please visit <https://www.abcam.co.jp/abpromise> or contact our technical team.

Terms and conditions

- Guarantee only valid for products bought direct from Abcam or one of our authorized distributors