

Native human Cathepsin D protein ab91123

1 References [画像数 2](#)

製品の詳細

製品名	Native human Cathepsin D protein
生理活性	Activity: >=300 units per mg protein. One unit is defined as the amount of enzyme that digests hemoglobin-releasing peptides which are soluble in 10% TCA. The reaction is measured by an increase of an A280 of 1.0 per 60 minutes at 37°C . Substrate: acid denatured hemoglobin, pH 1.8 (0.2% in reaction mixture). Buffer: 100 mM formate, pH 3.3.
精製度	> 95 % SDS-PAGE.
発現系	Native
アクセッション番号	<u>P07339</u>
タンパク質長	Full length protein
Animal free	No
由来	Native
生物種	Human
配列	MQPSSLLPLALCLLAAPASALVRIPLHKFTSIRRTMSEVGGS VEDLIAKG PVSKYSQAVPAVTEGPIPEVLKNYMDAQYYGEIGIGTPPQCF TVVFDTGS SNLWVPSIHCKLLDIACWIIHHKYNSDKSSTYVKNGTSFDIHY GSGSLSGY LSQDTVSVPCQSASSASALGGVKVERQVFGEATKQPGITFIA AKFDGILG MAYPRISVNNVLPVFDNLMQQLVDQNIIFS FYLSRDPDAQPG GELMLGGT DSKYYKGSLSYLVNTRKAYWQVHLDQVEVASGLTLCKEGCEA IVDTGTSL MVGPVDEVRELQKAIGAVPLIQGEYMIPCEKVSTLPAITLKL GGKGYKLS PEDYTLKVSQAGKTLCLSGFMGMDIPPPSGPLWILGDVFIGR YYTVFDRD NNRVGFAEAARL
予測される分子量	42 kDa
配列の追加情報	Source: Human Plasma

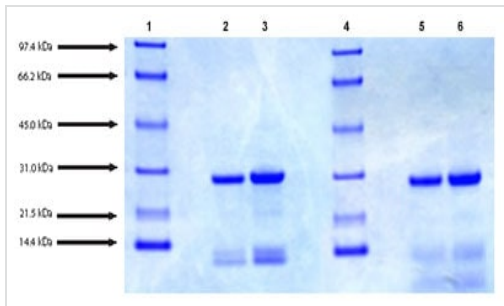
特性

Our **Abpromise guarantee** covers the use of **ab91123** in the following tested applications.

The application notes include recommended starting dilutions; optimal dilutions/concentrations should be determined by the end user.

アプリケーション	Functional Studies SDS-PAGE Western blot
製品の状態	Lyophilized
備考	Lyophilized from 2 mM Na phosphate, pH 6.5. Protein Determination: Extinction Coefficient (E) 0.1% at 280nm, 1cm pathway = 1.0 Prepared from tissue shown to be non reactive for HBsAg, anti-HCV, anti-HBc, and negative for anti-HIV 1 & 2 by FDA approved tests.
前処理および保存	
保存方法および安定性	Shipped at 4°C. Store at 4°C prior to reconstitution. Store at -80°C. pH: 6.50 Constituent: 0.0328% Sodium phosphate This product is an active protein and may elicit a biological response in vivo, handle with caution.
再構成	Resuspend a 25ug vial with 71.4uL of deionized H2O to give a protein concentration of 0.350mg/mL, which is the original protein concentration of the lot when it was finished. This should then be aliquotted into suitable amounts in a screw top vial to prevent sublimation and stored at <70 deg C. Aliquots should be diluted to appropriate concentration once thawed. We recommend 2mM NaP pH 6.5 to make dilutions.
関連情報	
機能	Acid protease active in intracellular protein breakdown. Involved in the pathogenesis of several diseases such as breast cancer and possibly Alzheimer disease.
組織特異性	Expressed in the aorta extracellular space (at protein level).
関連疾患	Ceroid lipofuscinosis, neuronal, 10
配列類似性	Belongs to the peptidase A1 family. Contains 1 peptidase A1 domain.
翻訳後修飾	N- and O-glycosylated.
細胞内局在	Lysosome. Melanosome. Secreted, extracellular space. Identified by mass spectrometry in melanosome fractions from stage I to stage IV. In aortic samples, detected as an extracellular protein loosely bound to the matrix (PubMed:20551380).

画像



SDS-PAGE - Native human Cathepsin D protein
(ab91123)

SDS-PAGE: 4-12% Bis-Tris NuPAGE gel

Lane 1. Molecular weight markers

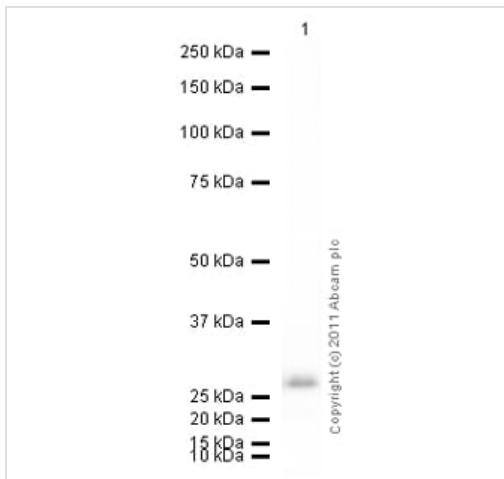
Lane 2. 4 µg Cathepsin D (non-reduced/no heat)

Lane 3. 7 µg Cathepsin D (non-reduced/no heat)

Lane 4. Molecular weight markers

Lane 5. 4 µg Cathepsin D (reduced/heated)

Lane 6. 7 µg Cathepsin D (reduced/heated)



Western blot - Native human Cathepsin D protein
(ab91123)

Anti-Cathepsin D antibody [4G2] ([ab40697](#)) at 1/500 dilution +
Native human Cathepsin D protein (ab91123) at 0.1 µg

Secondary

Goat Anti-Mouse IgG H&L (HRP) preadsorbed ([ab97040](#)) at
1/5000 dilution

Developed using the ECL technique.

Performed under reducing conditions.

Exposure time: 30 seconds

Please note: All products are "FOR RESEARCH USE ONLY. NOT FOR USE IN DIAGNOSTIC PROCEDURES"

Our Abpromise to you: Quality guaranteed and expert technical support

- Replacement or refund for products not performing as stated on the datasheet
- Valid for 12 months from date of delivery
- Response to your inquiry within 24 hours
- We provide support in Chinese, English, French, German, Japanese and Spanish
- Extensive multi-media technical resources to help you
- We investigate all quality concerns to ensure our products perform to the highest standards

If the product does not perform as described on this datasheet, we will offer a refund or replacement. For full details of the Abpromise, please visit <https://www.abcam.co.jp/abpromise> or contact our technical team.

Terms and conditions

- Guarantee only valid for products bought direct from Abcam or one of our authorized distributors