

Native human Cathepsin B protein ab90387

1 References [画像数 1](#)

製品の詳細

製品名	Native human Cathepsin B protein
生理活性	Activity: Greater than 200 units per mg protein. One unit is defined as the amount of enzyme that hydrolyzes one μ mole of Z-Arg-Arg-beta-naphthylamide per minute at 40°C, using 100 mM Na/K phosphate, pH 6.0, with 1.33 mM EDTA and 2 mM DTT as the activation buffer. Prepared from tissue shown to be non reactive for HBsAg, anti-HCV, anti-HBc, and negative for anti-HIV 1 & 2 by FDA approved tests.
精製度	> 95 % SDS-PAGE.
発現系	Native
アクセッション番号	<u>P07858</u>
タンパク質長	Full length protein
Animal free	No
由来	Native
生物種	Human
予測される分子量	28 kDa

特性

Our **Abpromise guarantee** covers the use of **ab90387** in the following tested applications.

The application notes include recommended starting dilutions; optimal dilutions/concentrations should be determined by the end user.

アプリケーション	Functional Studies
	SDS-PAGE
	Western blot

製品の状態	Liquid
-------	--------

前処理および保存

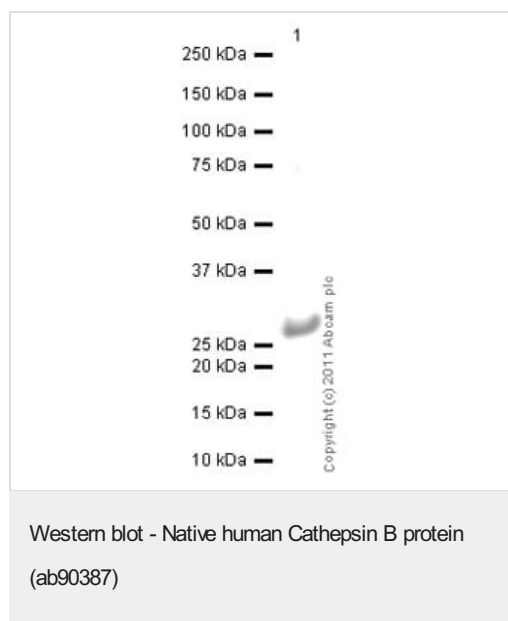
保存方法および安定性	Shipped on dry ice. Upon delivery aliquot and store at -80°C. Avoid freeze / thaw cycles. pH: 5.00 Constituents: 0.41% Sodium acetate, 0.0292% EDTA
------------	---

This product is an active protein and may elicit a biological response in vivo, handle with caution.

関連情報

機能	Thiol protease which is believed to participate in intracellular degradation and turnover of proteins. Has also been implicated in tumor invasion and metastasis.
配列類似性	Belongs to the peptidase C1 family.
細胞内局在	Lysosome. Melanosome. Identified by mass spectrometry in melanosome fractions from stage I to stage IV.

画像



Anti-Cathepsin B antibody [CA10] ([ab58802](#)) at 0.25 µg/ml +
Native human Cathepsin B protein (ab90387) at 0.01 µg

Secondary

Goat Anti-Mouse IgG H&L (HRP) preadsorbed ([ab97040](#)) at
1/5000 dilution

Developed using the ECL technique.

Performed under reducing conditions.

Exposure time: 10 seconds

Please note: All products are "FOR RESEARCH USE ONLY. NOT FOR USE IN DIAGNOSTIC PROCEDURES"

Our Abpromise to you: Quality guaranteed and expert technical support

- Replacement or refund for products not performing as stated on the datasheet
- Valid for 12 months from date of delivery
- Response to your inquiry within 24 hours
- We provide support in Chinese, English, French, German, Japanese and Spanish
- Extensive multi-media technical resources to help you
- We investigate all quality concerns to ensure our products perform to the highest standards

If the product does not perform as described on this datasheet, we will offer a refund or replacement. For full details of the Abpromise, please visit <https://www.abcam.co.jp/abpromise> or contact our technical team.

Terms and conditions

- Guarantee only valid for products bought direct from Abcam or one of our authorized distributors