

# Native Clostridium difficile Toxin B protein ab124001

★★★★★ [1 Abreviews](#) [7 References](#) [画像数 1](#)

### 製品の詳細

製品名	Native Clostridium difficile Toxin B protein
生理活性	Measured by vercytotoxicity assay with 2 pg/ml as lowest point at which rounded cells are observed.
精製度	> 95 % Affinity purified. Clostridium difficile Toxin B has been highly purified.
発現系	Native
アクセッション番号	<b>P18177</b>
タンパク質長	Full length protein
Animal free	No
由来	Native
予測される分子量	270 kDa
領域	2 to 2366

### 特性

Our **Abpromise guarantee** covers the use of **ab124001** in the following tested applications.

The application notes include recommended starting dilutions; optimal dilutions/concentrations should be determined by the end user.

アプリケーション	SDS-PAGE Functional Studies
----------	--------------------------------

製品の状態	Lyophilized
-------	-------------

**備考** This protein is derived from a pathogenic organism, and may be involved in a disease process, consequently exposure may have adverse health effects.

This product is an active protein and may elicit a biological response in vivo, handle with caution.

#### Functional Studies Protocol

1.1 Vero cells are plated out the night before on a 96-well plate at a concentration of 20K cells per well (in 100ml), then incubated at 37°C, 5% CO<sub>2</sub>. The following day they should be lightly confluent.

1.2 Lyophilised toxin/toxoid is resuspended as per the instructions in the certificate of analysis, and diluted in duplicate to 0.1mg/ml in DMEM (200ml total) without FBS in the first well of a non-TC-treated 96-well plate. A serial 5-fold dilution is performed (40ul in 160ul) in the same media using a multichannel for 11 dilutions in total, leaving the 12th dilution as a media control.

1.3 20ul of each dilution is then pipetted onto each well of the pre-prepared Vero cells and then incubated at 37°C, 5% CO<sub>2</sub> for 24 hours.

1.4 The following day, the cells are examined using an inverted phase contrast tissue culture microscope. Cells with active toxin on should be rounded, cells without significant toxicity should look like the control cells.

## 前処理および保存

### 保存方法および安定性

Shipped at 4°C. Store at +4°C. Avoid freeze / thaw cycle. Please see notes section.

pH: 7.00

Constituents: 1.19% HEPES, 5% Sucrose, 0.88% Sodium chloride

This product is an active protein and may elicit a biological response in vivo, handle with caution.

### 再構成

Reconstitute in 250μl sterile distilled water. Swirl or pipette gently to mix. Vortexing promotes aggregation. Store the lyophilised vial between +2°C to +8°C for up to 1 year from date of receipt. Store the reconstituted liquid between +2°C to +8°C for up to a month. Reconstituted liquid can be frozen immediately and stored at -80°C to extend stability to 1 year.

## 関連情報

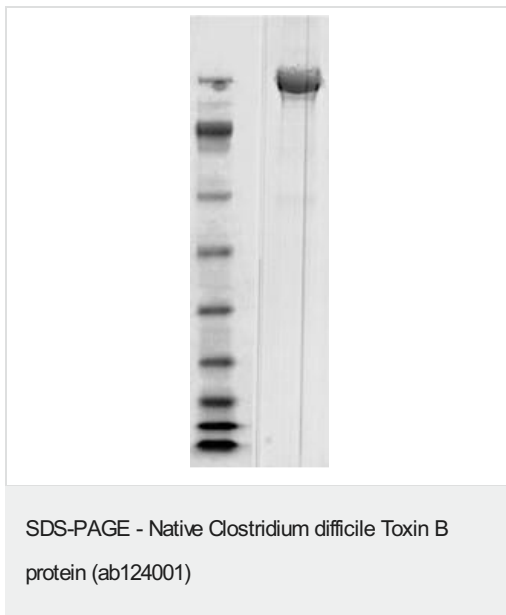
### 関連性

Clostridium difficile Toxin B (tcdB or ToxB) is a glucosyltransferase which is known to inactivate Rho, Cdc42 and Rac within target cells. This toxin is encoded on a pathogenicity region of the C. difficile chromosome and is expressed during the log and stationary phases of growth in response to a variety of environmental stimuli.

### 細胞内局在

Secreted

## 画像



SDS-PAGE showing ab124001 at 270 kDa.

SDS-PAGE - Native Clostridium difficile Toxin B protein (ab124001)

**Please note:** All products are "FOR RESEARCH USE ONLY. NOT FOR USE IN DIAGNOSTIC PROCEDURES"

## **Our Abpromise to you: Quality guaranteed and expert technical support**

---

- Replacement or refund for products not performing as stated on the datasheet
- Valid for 12 months from date of delivery
- Response to your inquiry within 24 hours
  
- We provide support in Chinese, English, French, German, Japanese and Spanish
- Extensive multi-media technical resources to help you
- We investigate all quality concerns to ensure our products perform to the highest standards

If the product does not perform as described on this datasheet, we will offer a refund or replacement. For full details of the Abpromise, please visit <https://www.abcam.co.jp/abpromise> or contact our technical team.

## **Terms and conditions**

---

- Guarantee only valid for products bought direct from Abcam or one of our authorized distributors