

### Human Oct4 peptide ab20650

**5 References** [画像数 1](#)

#### 製品の詳細

製品名	Human Oct4 peptide
精製度	> 70 % HPLC. 70 - 90% by HPLC
アクセッション番号	<b><u>Q01860</u></b>
Animal free	No
由来	Synthetic
生物種	Human

#### 特性

Our **Abpromise guarantee** covers the use of **ab20650** in the following tested applications.

The application notes include recommended starting dilutions; optimal dilutions/concentrations should be determined by the end user.

アプリケーション	Blocking - Blocking peptide for Anti-Oct4 antibody ( <b><u>ab19857</u></b> )
製品の状態	Liquid
備考	<ul style="list-style-type: none"> <li>- First try to dissolve a small amount of peptide in either water or buffer. The more charged residues on a peptide, the more soluble it is in aqueous solutions.</li> <li>- If the peptide doesn't dissolve try an organic solvent e.g. DMSO, then dilute using water or buffer.</li> <li>- Consider that any solvent used must be compatible with your assay. If a peptide does not dissolve and you need to recover it, lyophilise to remove the solvent.</li> <li>- Gentle warming and sonication can effectively aid peptide solubilisation. If the solution is cloudy or has gelled the peptide may be in suspension rather than solubilised.</li> <li>- Peptides containing cysteine are easily oxidised, so should be prepared in solution just prior to use.</li> </ul>

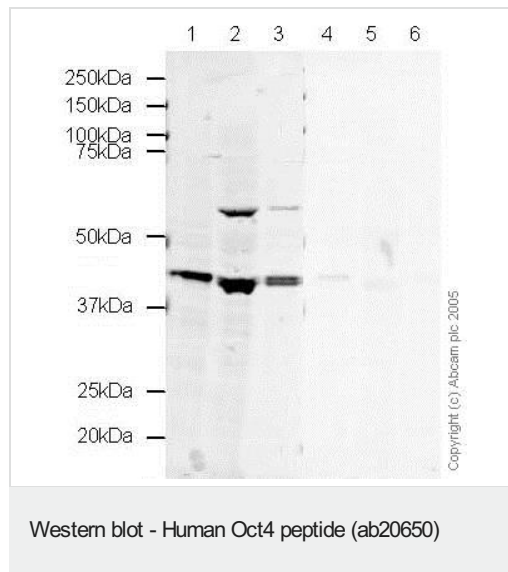
#### 前処理および保存

保存方法および安定性	Shipped at 4°C. Store at +4°C short term (1-2 weeks). Upon delivery aliquot. Store at -20°C. Avoid freeze / thaw cycle.  Information available upon request.
------------	--

## 関連情報

機能	Transcription factor that binds to the octamer motif (5'-ATTTGCAT-3'). Forms a trimeric complex with SOX2 on DNA and controls the expression of a number of genes involved in embryonic development such as YES1, FGF4, UTF1 and ZFP206. Critical for early embryogenesis and for embryonic stem cell pluripotency.
組織特異性	Expressed in developing brain. Highest levels found in specific cell layers of the cortex, the olfactory bulb, the hippocampus and the cerebellum. Low levels of expression in adult tissues.
配列類似性	Belongs to the POU transcription factor family. Class-5 subfamily. Contains 1 homeobox DNA-binding domain. Contains 1 POU-specific domain.
発生段階	Highly expressed in undifferentiated embryonic stem cells and expression decreases gradually after embryoid body (EB) formation.
ドメイン	The POU-specific domain mediates interaction with PKM2.
翻訳後修飾	Sumoylation enhances the protein stability, DNA binding and transactivation activity. Sumoylation is required for enhanced YES1 expression. Ubiquitinated; undergoes 'Lys-63'-linked polyubiquitination by WWP2 leading to proteasomal degradation.
細胞内局在	Nucleus. Expressed in a diffuse and slightly punctuate pattern.

## 画像



Anti-Oct4 antibody **ab19857** only detected a band corresponding to the expected size of Oct-4 in human ES cell lysate. In mouse ES and EG cell lysates, **ab19857** detected a band of approximately 55 kDa in addition to the expected 39 kDa Oct-4 band.

**Please note:** All products are "FOR RESEARCH USE ONLY. NOT FOR USE IN DIAGNOSTIC PROCEDURES"

## Our Abpromise to you: Quality guaranteed and expert technical support

- Replacement or refund for products not performing as stated on the datasheet
- Valid for 12 months from date of delivery
- Response to your inquiry within 24 hours
- We provide support in Chinese, English, French, German, Japanese and Spanish

- Extensive multi-media technical resources to help you
- We investigate all quality concerns to ensure our products perform to the highest standards

If the product does not perform as described on this datasheet, we will offer a refund or replacement. For full details of the Abpromise, please visit <https://www.abcam.co.jp/abpromise> or contact our technical team.

#### **Terms and conditions**

---

- Guarantee only valid for products bought direct from Abcam or one of our authorized distributors