

### Anti-ZWINT antibody ab84367

[4 References](#) [画像数 2](#)

#### 製品の概要

<b>製品名</b>	Anti-ZWINT antibody
<b>製品の詳細</b>	Rabbit polyclonal to ZWINT
<b>由来種</b>	Rabbit
<b>アプリケーション</b>	<b>適用あり:</b> ICC/IF, IHC-P
<b>種交差性</b>	<b>交差種:</b> Human <b>交差が予測される動物種:</b> Chimpanzee, Macaque monkey 
<b>免疫原</b>	Synthetic peptide corresponding to a region within C terminal amino acids 225-277 ( PEAEAEAENLPDDKPQQPTRPQEQTGDTMGRDPGVSFKAVG LQPAGDVN LP ) of Human ZWINT (NP_008988.2) <div style="display: flex; justify-content: space-around; margin-top: 5px;"> <span> <a href="#">Run BLAST with</a></span> <span> <a href="#">Run BLAST with</a></span> </div>
<b>ポジティブ・コントロール</b>	Human testis tissue. HeLa cells.
<b>特記事項</b>	<p>The Life Science industry has been in the grips of a reproducibility crisis for a number of years. Abcam is leading the way in addressing this with our range of recombinant monoclonal antibodies and knockout edited cell lines for gold-standard validation. Please check that this product meets your needs before purchasing.</p> <p>If you have any questions, special requirements or concerns, please send us an inquiry and/or contact our Support team ahead of purchase. Recommended alternatives for this product can be found below, along with publications, customer reviews and Q&amp;As</p>

#### 製品の特性

<b>製品の状態</b>	Liquid
<b>保存方法</b>	Shipped at 4°C. Upon delivery aliquot and store at -20°C. Avoid freeze / thaw cycles.
<b>バッファー</b>	pH: 6.8 Preservative: 0.09% Sodium azide Constituents: 0.1% BSA, Tris buffered saline
<b>精製度</b>	Immunogen affinity purified
<b>ポリ/モノ</b>	ポリクローナル
<b>アイソタイプ</b>	IgG

## アプリケーション

**The Abpromise guarantee** **Abpromise保証は、** 次のテスト済みアプリケーションにおけるab84367の使用に適用されます  
アプリケーションノートには、推奨の開始希釈率がありますが、適切な希釈率につきましてはご検討ください。

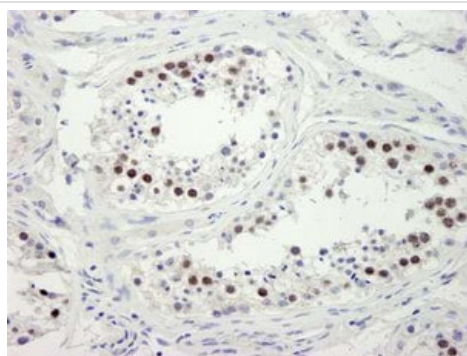
アプリケーション	Abreviews	特記事項
ICC/IF		1/100 - 1/500. Fix with PFA do not fix with acetone.
IHC-P		1/100 - 1/500.

## ターゲット情報

**機能** Part of the MIS12 complex, which is required for kinetochore formation and spindle checkpoint activity. Required to target ZW10 to the kinetochore at prometaphase.

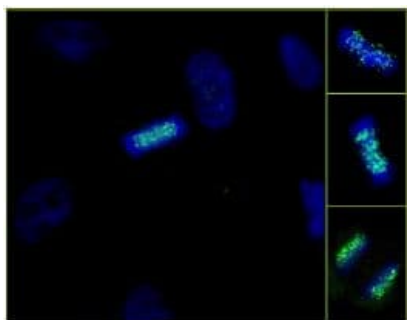
**細胞内局在** Nucleus. Chromosome > centromere > kinetochore. Localizes to kinetochores from late prophase to anaphase.

## 画像



Immunohistochemistry analysis of formalin-fixed, paraffin-embedded Human testis tissue using ab84367 at 1/250, followed by DAB staining.

Immunohistochemistry (Formalin/PFA-fixed paraffin-embedded sections) - Anti-ZWINT antibody (ab84367)



ab84367 at 1/250 dilution staining ZWINT in NBF-fixed asynchronous human Hela cells by Immunocytochemistry / Immunofluorescence.

Immunocytochemistry/ Immunofluorescence - Anti-ZWINT antibody (ab84367)

**Please note:** All products are "FOR RESEARCH USE ONLY. NOT FOR USE IN DIAGNOSTIC PROCEDURES"

### **Our Abpromise to you: Quality guaranteed and expert technical support**

---

- Replacement or refund for products not performing as stated on the datasheet
- Valid for 12 months from date of delivery
- Response to your inquiry within 24 hours
  
- We provide support in Chinese, English, French, German, Japanese and Spanish
- Extensive multi-media technical resources to help you
- We investigate all quality concerns to ensure our products perform to the highest standards

If the product does not perform as described on this datasheet, we will offer a refund or replacement. For full details of the Abpromise, please visit <https://www.abcam.co.jp/abpromise> or contact our technical team.

### **Terms and conditions**

---

- Guarantee only valid for products bought direct from Abcam or one of our authorized distributors