

Anti-ZW10 antibody ab21582

★★★★☆ **8 Abreviews** **22 References** 画像数 4

製品の概要

製品名	Anti-ZW10 antibody
製品の詳細	Rabbit polyclonal to ZW10
由来種	Rabbit
アプリケーション	適用あり: IHC-P, WB, ICC/IF, IP
種交差性	交差種: Human 交差が予測される動物種: Mouse, Rat, Dog, Xenopus laevis 
免疫原	Synthetic peptide conjugated to KLH derived from within residues 1 - 100 of Human ZW10. Immunogen の所有権に関して (Peptides available as ab23436 , ab23437 and ab23436 .)
ポジティブ・コントロール	Jurkat whole cell lysate
特記事項	<p>The Life Science industry has been in the grips of a reproducibility crisis for a number of years. Abcam is leading the way in addressing this with our range of recombinant monoclonal antibodies and knockout edited cell lines for gold-standard validation. Please check that this product meets your needs before purchasing.</p> <p>If you have any questions, special requirements or concerns, please send us an inquiry and/or contact our Support team ahead of purchase. Recommended alternatives for this product can be found below, along with publications, customer reviews and Q&As</p>

製品の特性

製品の状態	Liquid
保存方法	Shipped at 4°C. Store at +4°C short term (1-2 weeks). Upon delivery aliquot. Store at -20°C or -80°C. Avoid freeze / thaw cycle.
バッファー	pH: 7.40 Preservative: 0.02% Sodium azide Constituent: PBS Batches of this product that have a concentration < 1mg/ml may have BSA added as a stabilising agent. If you would like information about the formulation of a specific lot, please contact our scientific support team who will be happy to help.
精製度	Immunogen affinity purified
ポリ/モノ	ポリクローナル

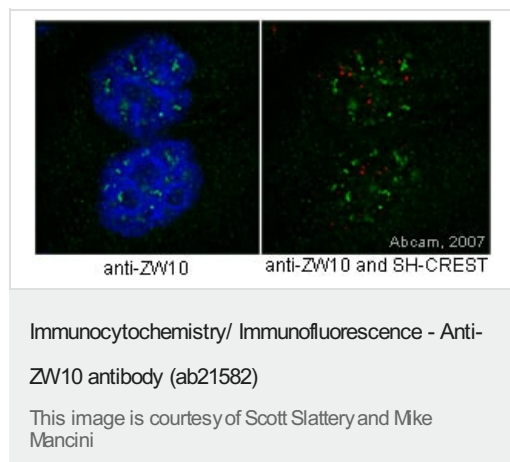
アプリケーション

The Abpromise guarantee Abpromise保証は、 次のテスト済みアプリケーションにおけるab21582の使用に適用されます
アプリケーションノートには、推奨の開始希釈率がありますが、適切な希釈率につきましてはご検討ください。

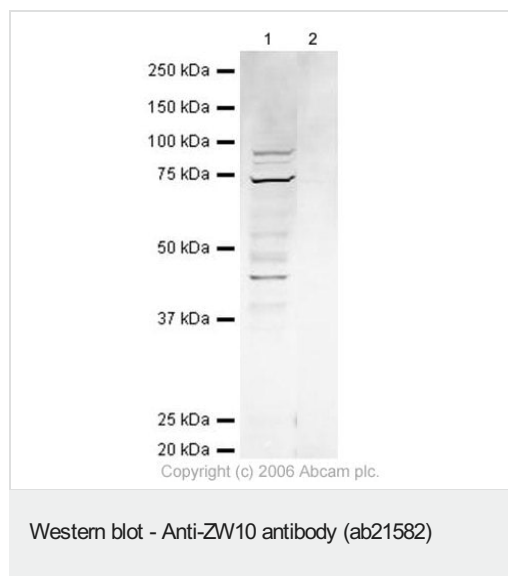
アプリケーション	Abreviews	特記事項
IHC-P	★★★★★ (1)	Use at an assay dependent concentration.
WB	★★★★★ (1)	Use a concentration of 1 µg/ml. Detects a band of approximately 88 kDa (predicted molecular weight: 88 kDa).
ICC/IF	★★★★★ (6)	1/100.
IP		Use at an assay dependent concentration.

ターゲット情報

画像



Panel one shows staining of HeLa cells by anti-ZW10 (ab21582) in green and DAPI in blue. The second panel shows staining by anti-ZW10 in green and SH-CREST in red, which stains the centromeres. In most cells at interphase, ZW10 is present diffusely in the cytoplasm. In prometaphase, it is associated with the kinetochore. Fix cells for 30 minutes on ice in 4% formaldehyde in PEM. Quench autofluorescence 2 x 5 minutes with 1 mg/ml Na borohydride or 100 mM ammonium chloride in PEM. Permeabilize 30 minutes with 0.5% TX-100 in PEM. Block 30 minutes in 5% milk in TBST. Primary antibody incubated overnight at 4°C diluted 1/100 in 5% milk in TBST. Secondary antibody 1 hour at RT diluted in 5% milk in TBST. Post-fix 20 min. on ice in 4% formaldehyde in PEM. Quench autofluorescence 2 x 5 minutes with ammonium chloride in PEM. Counterstain with DAPI in TBST. Mount with ProLong Gold antifade reagent from Invitrogen. Notes: Ample washing between each step. TBST = Tris buffered saline +



All lanes : Anti-ZW10 antibody (ab21582) at 1 µg/ml

Lane 1 : Jurkat whole cell lysate (**ab7899**)

Lane 2 : Jurkat whole cell lysate (**ab7899**) with ZW10 peptide (**ab23436**) at 1 µg/ml

Lysates/proteins at 20 µg per lane.

Secondary

All lanes : Goat polyclonal to Rabbit IgG(Alexa Fluor® 680) at 1/10,000 dilution

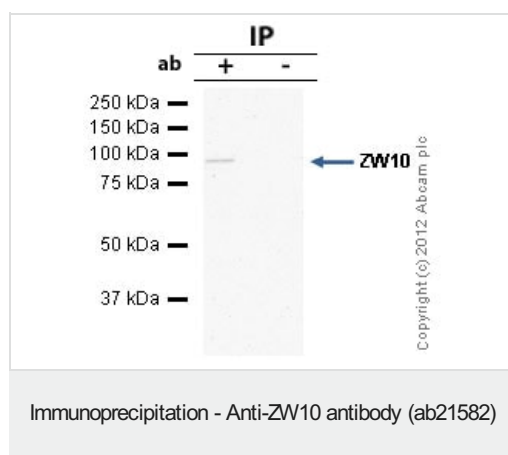
Performed under reducing conditions.

Predicted band size: 88 kDa

Observed band size: 88 kDa

Additional bands at: 45 kDa (possible cleavage fragment), 45 kDa (possible cross reactivity), 75 kDa (possible cleavage fragment), 75 kDa (possible cross reactivity)

This antibody detects a band at approximately 88kDa that corresponds in size to ZW10. It also detects bands at 75 and 45kDa that may be degradation products or crossreactivity. All of these bands are competed away by the addition of the immunizing peptide, suggesting that they are specific interactions.



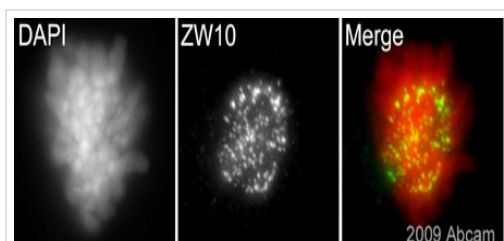
ZW10 was immunoprecipitated using 0.5mg Jurkat whole cell extract, 5µg of Rabbit polyclonal to ZW10 and 50µl of protein G magnetic beads (+). No antibody was added to the control (-). The antibody was incubated under agitation with Protein G beads for 10min, Jurkat whole cell extract lysate diluted in RIPA buffer was added to each sample and incubated for a further 10min under agitation.

Proteins were eluted by addition of 40µl SDS loading buffer and incubated for 10min at 70°C; 10µl of each sample was separated on a SDS PAGE gel, transferred to a nitrocellulose membrane, blocked with 5% BSA and probed with ab21582.

Secondary: Mouse monoclonal [SB62a] Secondary Antibody to

Rabbit IgG light chain (HRP) ([ab99697](#)).

Band: 88kDa: ZW10



Immunocytochemistry/ Immunofluorescence - Anti-ZW10 antibody (ab21582)

This image is courtesy of an Abreview submitted by Dr Kirk McManus

ab21582 (1/200) staining ZW10 in asynchronous mouse 10T1/2 cells (green). Cells were pre-extracted with PEM (1min) at room temperature, fixed in paraformaldehyde (10 mins), washed in KB+ buffer and counterstained with DAPI in order to highlight the DNA/nucleus (red). Please note that ab21582 might only perform well when using this specific protocol. Please refer to abreview for further experimental details.

Please note: All products are "FOR RESEARCH USE ONLY. NOT FOR USE IN DIAGNOSTIC PROCEDURES"

Our Abpromise to you: Quality guaranteed and expert technical support

- Replacement or refund for products not performing as stated on the datasheet
- Valid for 12 months from date of delivery
- Response to your inquiry within 24 hours
- We provide support in Chinese, English, French, German, Japanese and Spanish
- Extensive multi-media technical resources to help you
- We investigate all quality concerns to ensure our products perform to the highest standards

If the product does not perform as described on this datasheet, we will offer a refund or replacement. For full details of the Abpromise, please visit <https://www.abcam.co.jp/abpromise> or contact our technical team.

Terms and conditions

- Guarantee only valid for products bought direct from Abcam or one of our authorized distributors