

Anti-ZO1 tight junction protein antibody ab96587

★★★★☆ [4 Abreviews](#) [152 References](#) [画像数 6](#)

製品の概要

製品名	Anti-ZO1 tight junction protein antibody
製品の詳細	Rabbit polyclonal to ZO1 tight junction protein
由来種	Rabbit
アプリケーション	適用あり: ICC/IF, WB 適用なし: IHC-P
種交差性	交差種: Mouse, Human
免疫原	Recombinant protein fragment corresponding to a region within amino acids 1 - 266 of Human ZO1 tight junction protein.
ポジティブ・コントロール	WB: HEK-293T, HeLa, Neuro-2a, C8-D30, NIH/3T3 and C2C12 cell lysate, mouse testis tissue lysate. ICC/IF: NTERA-2 cl.D1 [NT2/D1] cells and H661 xenograft tissue.
特記事項	<p>The Life Science industry has been in the grips of a reproducibility crisis for a number of years. Abcam is leading the way in addressing this with our range of recombinant monoclonal antibodies and knockout edited cell lines for gold-standard validation. Please check that this product meets your needs before purchasing.</p> <p>If you have any questions, special requirements or concerns, please send us an inquiry and/or contact our Support team ahead of purchase. Recommended alternatives for this product can be found below, along with publications, customer reviews and Q&As</p>

製品の特性

製品の状態	Liquid
保存方法	Shipped at 4°C. Store at +4°C short term (1-2 weeks). Upon delivery aliquot. Store at -20°C. Avoid freeze / thaw cycle.
バッファー	pH: 7.00 Preservative: 0.025% Proclin 300 Constituents: 79% PBS, 20% Glycerol (glycerin, glycerine)
精製度	Immunogen affinity purified
ポリ/モノ	ポリクローナル
アイソタイプ	IgG

アプリケーション

The Abpromise guarantee **Abpromise保証は、次のテスト済みアプリケーションにおけるab96587の使用に適用されず**
アプリケーションノートには、推奨の開始希釈率がありますが、適切な希釈率につきましてはご検討ください。

アプリケーション	Abreviews	特記事項
ICC/IF		1/100 - 1/1000. Fix cells in ice-cold MeOH
WB	★★★★★ (2)	1/500 - 1/3000. Predicted molecular weight: 187 kDa. 5% gel. Blocking condition: 5% non-fat milk in TBST, RT, 60min. Primary antibody incubation: 4°C overnight. Molecular weight shift may be caused by post-translation modification, there are multiple phosphorylation sites on ZO-1. It

追加情報

Is unsuitable for IHC-P.

ターゲット情報

機能

The N-terminal may be involved in transducing a signal required for tight junction assembly, while the C-terminal may have specific properties of tight junctions. The alpha domain might be involved in stabilizing junctions.

組織特異性

The alpha-containing isoform is found in most epithelial cell junctions. The short isoform is found both in endothelial cells and the highly specialized epithelial junctions of renal glomeruli and Sertoli cells of the seminiferous tubules.

配列類似性

Belongs to the MAGUK family.
Contains 1 guanylate kinase-like domain.
Contains 3 PDZ (DHR) domains.
Contains 1 SH3 domain.
Contains 1 ZU5 domain.

ドメイン

The second PDZ domain mediates interaction with GJA12.

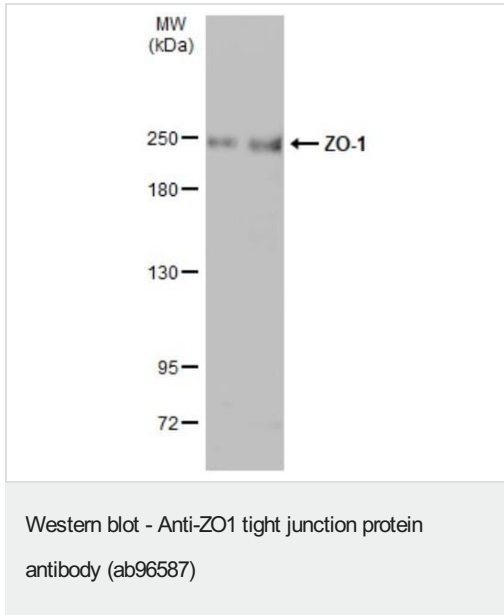
翻訳後修飾

Phosphorylated. Dephosphorylated by PTPRJ.

細胞内局在

Cell membrane. Cell junction > tight junction. Movement of ZO-1 from the cytoplasm to membrane is an early event occurring concurrently with cell-cell contact.

画像



All lanes : Anti-ZO1 tight junction protein antibody (ab96587) at 1/1000 dilution

Lane 1 : HEK-293T (human epithelial cell line from embryonic kidney transformed with large T antigen) whole cell lysate

Lane 2 : HeLa (human epithelial cell line from cervix adenocarcinoma) whole cell lysate

Lysates/proteins at 30 µg per lane.

Secondary

All lanes : HRP-conjugated anti-rabbit IgG antibody

Predicted band size: 187 kDa

5% gel.

Running condition: 80V, 15min; 140V, 40min.

Transfer condition: Semi-dry, 18 V, 60min (Nitrocellulose membrane)

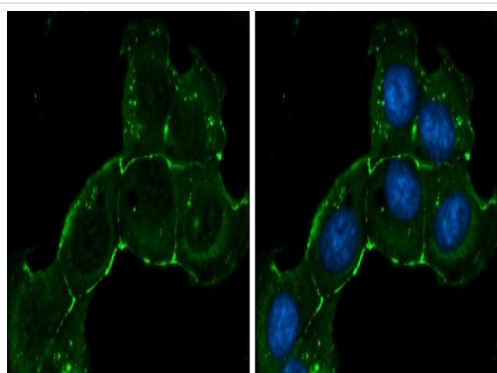
Blocking condition: 5% non-fat milk in TBST, RT, 60min.

Primary antibody incubation: 4°C overnight.

Secondary antibody incubation: Room temperature for 1 hour.

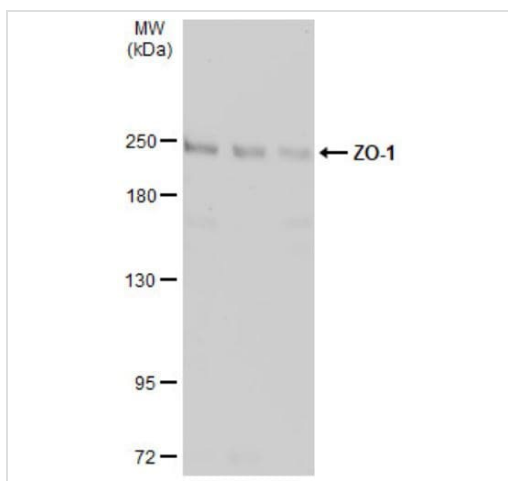
Washing condition: 5 ml TBST, 4 x 5min.

ECL detection.



Immunocytochemistry/ Immunofluorescence - Anti-ZO1 tight junction protein antibody (ab96587)

Immunofluorescence analysis of ice-cold methanol-fixed (5 min) NTERA-2 cl.D1 [NT2/D1] (human malignant pluripotent embryonic carcinoma cell line) cells labeling ZO1 tight junction protein at cell membrane (green) with ab96587 at 1/200 dilution. Blue: Hoechst 33342 staining.



Western blot - Anti-ZO1 tight junction protein antibody (ab96587)

All lanes : Anti-ZO1 tight junction protein antibody (ab96587) at 1/500 dilution

Lane 1 : Neuro-2a (mouse neuroblastoma cell line) whole cell lysate

Lane 2 : C8-D30 (mouse astrocyte type III cerebellum cell line) whole cell lysate

Lane 3 : NIH/3T3 (mouse embryo fibroblast cell line) whole cell lysate

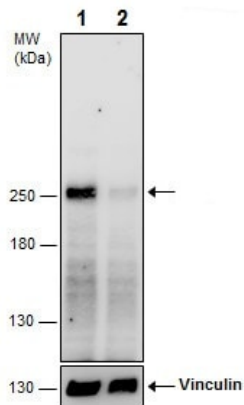
Lysates/proteins at 30 µg per lane.

Secondary

All lanes : HRP-conjugated anti-rabbit IgG antibody

Predicted band size: 187 kDa

5% SDS-PAGE



Western blot - Anti-ZO1 tight junction protein antibody (ab96587)

All lanes : Anti-ZO1 tight junction protein antibody (ab96587) at 1/1000 dilution

Lane 1 : Non-transfected HeLa (human epithelial cell line from cervix adenocarcinoma) whole cell extract

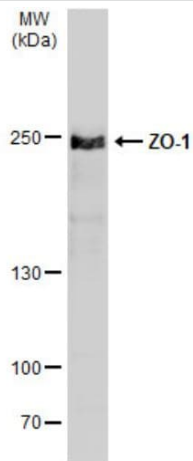
Lane 2 : ZO1 tight junction protein shRNA-transfected HeLa whole cell extract

Lysates/proteins at 30 µg per lane.

Secondary

All lanes : HRP-conjugated anti-rabbit IgG

Predicted band size: 187 kDa



Western blot - Anti-ZO1 tight junction protein antibody (ab96587)

5% SDS-PAGE

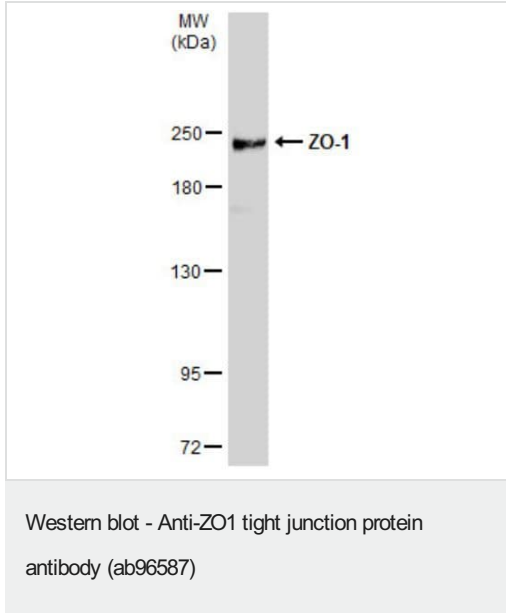
Anti-ZO1 tight junction protein antibody (ab96587) at 1/500 dilution + Mouse testis tissue lysate at 50 µg

Secondary

HRP-conjugated anti-rabbit IgG antibody

Predicted band size: 187 kDa

5% SDS-PAGE



Anti-ZO1 tight junction protein antibody (ab96587) at 1/500 dilution
+ C2C12 (mouse myoblast cell line) whole cell lysate at 30 µg

Secondary

HRP-conjugated anti-rabbit IgG antibody

Predicted band size: 187 kDa

5% SDS-PAGE

Please note: All products are "FOR RESEARCH USE ONLY. NOT FOR USE IN DIAGNOSTIC PROCEDURES"

Our Abpromise to you: Quality guaranteed and expert technical support

- Replacement or refund for products not performing as stated on the datasheet
- Valid for 12 months from date of delivery
- Response to your inquiry within 24 hours
- We provide support in Chinese, English, French, German, Japanese and Spanish
- Extensive multi-media technical resources to help you
- We investigate all quality concerns to ensure our products perform to the highest standards

If the product does not perform as described on this datasheet, we will offer a refund or replacement. For full details of the Abpromise, please visit <https://www.abcam.co.jp/abpromise> or contact our technical team.

Terms and conditions

- Guarantee only valid for products bought direct from Abcam or one of our authorized distributors