

Anti-ZIP2 antibody ab118619

画像数 2

製品の概要

製品名	Anti-ZIP2 antibody
製品の詳細	Rabbit polyclonal to ZIP2
由来種	Rabbit
特異性	At least two isoforms of ZIP2 are known to exist; ab118619 antibody will recognize only the shorter isoform. ab118619 antibody reacts with Human, Mouse and Rat and is predicted to not cross-react with other ZIP family members or with other Human proteins based on sequence homology.
アプリケーション	適用あり: ICC/IF, IHC-P, WB
種交差性	交差種: Mouse, Rat, Human
免疫原	Synthetic peptide corresponding to Human ZIP2 (N terminal). NP_055394 Database link: Q9NP94
ポジティブ・コントロール	Rat brain tissue lysate tested by WB.
特記事項	<p>The Life Science industry has been in the grips of a reproducibility crisis for a number of years. Abcam is leading the way in addressing this with our range of recombinant monoclonal antibodies and knockout edited cell lines for gold-standard validation. Please check that this product meets your needs before purchasing.</p> <p>If you have any questions, special requirements or concerns, please send us an inquiry and/or contact our Support team ahead of purchase. Recommended alternatives for this product can be found below, along with publications, customer reviews and Q&As</p>

製品の特性

製品の状態	Liquid
保存方法	Shipped at 4°C. Store at +4°C short term (1-2 weeks). Store at -20°C or -80°C. Avoid freeze / thaw cycle.
バッファー	pH: 7.2 Preservative: 0.02% Sodium azide Constituent: 99% PBS
精製度	Immunogen affinity purified
ポリ/モノ	ポリクローナル
アイソタイプ	IgG

アプリケーション

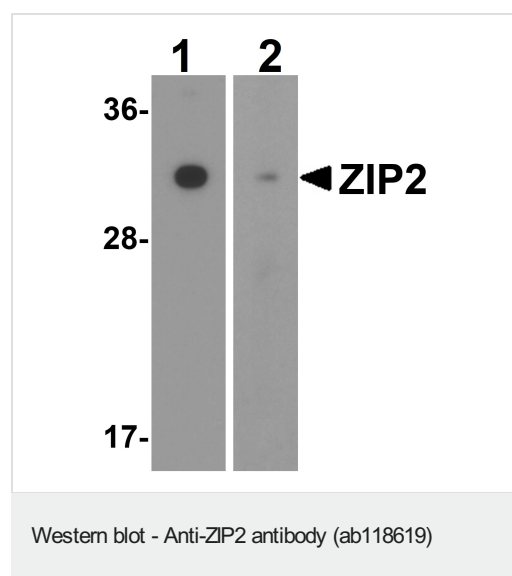
The Abpromise guarantee Abpromise保証は、次のテスト済みアプリケーションにおけるab118619の使用に適用されます
アプリケーションノートには、推奨の開始希釈率がありますが、適切な希釈率につきましてはご確認ください。

アプリケーション	Abreviews	特記事項
ICC/IF		Use at an assay dependent concentration.
IHC-P		Use at an assay dependent concentration.
WB		Use a concentration of 1 - 2 µg/ml. Predicted molecular weight: 33 kDa.

ターゲット情報

機能	Mediates zinc uptake. Zinc uptake may be mediated by a Zn(2+)-HCO(3)(-) symport mechanism and can function in the presence of albumin. May also transport other divalent cations. May be important in contact inhibition of normal epithelial cells and loss of its expression may play a role in tumorigenesis.
組織特異性	Expressed only in prostate and uterine epithelial cells.
配列類似性	Belongs to the ZIP transporter (TC 2.A.5) family.
細胞内局在	Cell membrane.

画像

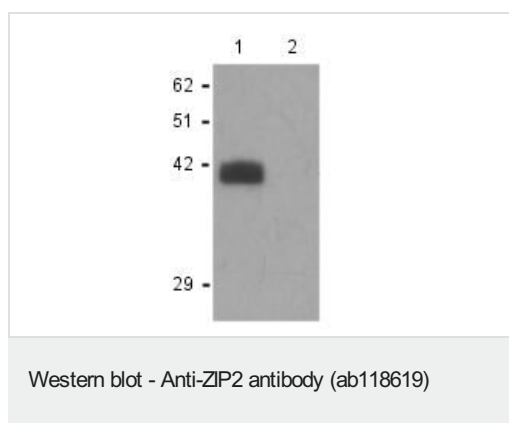


All lanes : Anti-ZIP2 antibody (ab118619) at 1 µg/ml

Lane 1 : Rat brain tissue lysate

Lane 2 : Rat brain tissue lysate, with blocking peptide

Predicted band size: 33 kDa



All lanes : Anti-ZIP2 antibody (ab118619) (1 µg/ml)

Lane 1 : Rat brain tissue lysate without blocking peptide

Lane 2 : Rat brain tissue lysate with blocking peptide

Lysates/proteins at 15 µg per lane.

Predicted band size: 33 kDa

Please note: All products are "FOR RESEARCH USE ONLY. NOT FOR USE IN DIAGNOSTIC PROCEDURES"

Our Abpromise to you: Quality guaranteed and expert technical support

- Replacement or refund for products not performing as stated on the datasheet
- Valid for 12 months from date of delivery
- Response to your inquiry within 24 hours
- We provide support in Chinese, English, French, German, Japanese and Spanish
- Extensive multi-media technical resources to help you
- We investigate all quality concerns to ensure our products perform to the highest standards

If the product does not perform as described on this datasheet, we will offer a refund or replacement. For full details of the Abpromise, please visit <https://www.abcam.co.jp/abpromise> or contact our technical team.

Terms and conditions

- Guarantee only valid for products bought direct from Abcam or one of our authorized distributors