

Anti-Zhangfei antibody ab28700

[1 Abreviews](#) [6 References](#) [画像数 1](#)

製品の概要

製品名	Anti-Zhangfei antibody
製品の詳細	Rabbit polyclonal to Zhangfei
由来種	Rabbit
アプリケーション	適用あり: WB
種交差性	交差種: Mouse, Human
免疫原	Synthetic peptide conjugated to KLH derived from within residues 250 to the C-terminus of Human Zhangfei. Immunogen の所有権に関して (Peptide available as ab28713 .)
ポジティブ・コントロール	This antibody gave a positive signal in the following whole cell lysates: 293T Embryonic Kidney cell line (Human), HepG2 (Human hepatocellular liver carcinoma cell line), MCF7 (Human breast adenocarcinoma cell line), HeLa (Human epithelial carcinoma cell line), PC3 (Human prostate cancer cell line), NIH 3T3 (Mouse embryonic fibroblast cell line). This antibody also gave a positive signal in the following tissue lysates: Human Heart, Human Brain, Human Kidney, Human Liver.
特記事項	<p>The Life Science industry has been in the grips of a reproducibility crisis for a number of years. Abcam is leading the way in addressing this with our range of recombinant monoclonal antibodies and knockout edited cell lines for gold-standard validation. Please check that this product meets your needs before purchasing.</p> <p>If you have any questions, special requirements or concerns, please send us an inquiry and/or contact our Support team ahead of purchase. Recommended alternatives for this product can be found below, along with publications, customer reviews and Q&As</p>

製品の特性

製品の状態	Liquid
保存方法	Shipped at 4°C. Store at +4°C short term (1-2 weeks). Upon delivery aliquot. Store at -20°C or -80°C. Avoid freeze / thaw cycle.
バッファー	pH: 7.40 Preservative: 0.02% Sodium azide Constituent: PBS

Batches of this product that have a concentration < 1mg/ml may have BSA added as a stabilising agent. If you would like information about the formulation of a specific lot, please contact our

scientific support team who will be happy to help.

精製度	Immunogen affinity purified
ポリ/モノ	ポリクローナル
アイソタイプ	IgG

アプリケーション

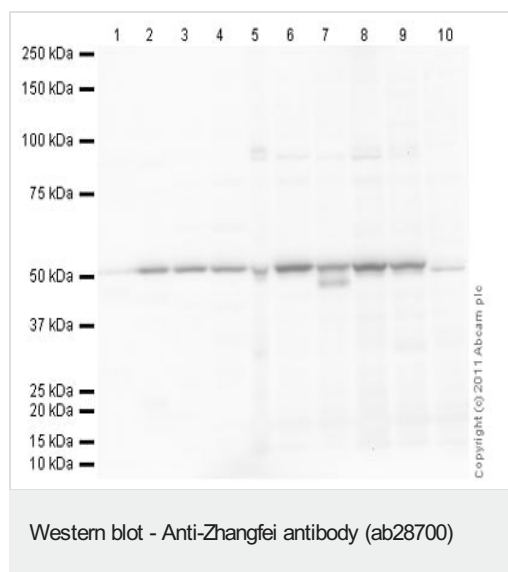
The Abpromise guarantee **Abpromise保証は、次のテスト済みアプリケーションにおけるab28700の使用に適用されず**
アプリケーションノートには、推奨の開始希釈率がありますが、適切な希釈率につきましてはご検討ください。

アプリケーション	Abreviews	特記事項
WB		Use a concentration of 1 µg/ml. Detects a band of approximately 50 kDa (predicted molecular weight: 30 kDa).

ターゲット情報

機能	Strongly activates transcription when bound to HCFC1. Suppresses the expression of HSV proteins in cells infected with the virus in a HCFC1-dependent manner. Also suppresses the HCFC1-dependent transcriptional activation by CREB3 and reduces the amount of CREB3 in the cell. Able to down-regulate expression of some cellular genes in CREBZF-expressing cells.
組織特異性	In adults, expressed most abundantly in heart, liver and skeletal muscle, moderately abundant in kidney and pancreas, and barely detectable in lung. In fetal tissues, expressed most abundantly in kidney and very low amounts in heart, lung and liver.
配列類似性	Belongs to the bZIP family. ATF subfamily. Contains 1 bZIP domain.
細胞内局在	Nucleus. Colocalizes at punctate nuclear structures with CREB3 and HCFC1.

画像



All lanes : Anti-Zhangfei antibody (ab28700) at 1 µg/ml

Lane 1 : Human heart tissue lysate - total protein ([ab29431](#))

Lane 2 : Human brain tissue lysate - total protein ([ab29466](#))

Lane 3 : Human kidney tissue lysate - total protein ([ab30203](#))

Lane 4 : Human liver tissue lysate - total protein ([ab29889](#))

Lane 5 : 293T Embryonic Kidney cell line (Human) Whole Cell Lysate

Lane 6 : HepG2 (Human hepatocellular liver carcinoma cell line) Whole Cell Lysate

Lane 7 : MCF7 (Human breast adenocarcinoma cell line) Whole Cell Lysate

Lane 8 : HeLa (Human epithelial carcinoma cell line) Whole Cell Lysate

Lane 9 : PC-3 whole cell lysate ([ab3954](#))

Lane 10 : NIH 3T3 (Mouse embryonic fibroblast cell line) Whole Cell Lysate

Lysates/proteins at 20 µg per lane.

Secondary

All lanes : Goat Anti-Rabbit IgG H&L (HRP) preadsorbed ([ab97080](#)) at 1/5000 dilution

Performed under reducing conditions.

Predicted band size: 30 kDa

Observed band size: 50 kDa

Exposure time: 2 minutes

In the literature Zhangfei is also referred to as SMILE (SHP-interacting leucine zipper protein). The SMILE gene generates two isoforms, SMILE-L (long isoform of SMILE, 50–60 kDa) and SMILE-S (short isoform of SMILE, 40 kDa), and [ab28700](#) predominantly recognizes the SMILE-L form.

Please note: All products are "FOR RESEARCH USE ONLY. NOT FOR USE IN DIAGNOSTIC PROCEDURES"

Our Abpromise to you: Quality guaranteed and expert technical support

- Replacement or refund for products not performing as stated on the datasheet
- Valid for 12 months from date of delivery
- Response to your inquiry within 24 hours
- We provide support in Chinese, English, French, German, Japanese and Spanish
- Extensive multi-media technical resources to help you
- We investigate all quality concerns to ensure our products perform to the highest standards

If the product does not perform as described on this datasheet, we will offer a refund or replacement. For full details of the Abpromise, please visit <https://www.abcam.co.jp/abpromise> or contact our technical team.

Terms and conditions

- Guarantee only valid for products bought direct from Abcam or one of our authorized distributors