

Anti-ZEB1 antibody ab124512

[1 Abreviews](#) [38 References](#) [画像数 4](#)

製品の概要

製品名	Anti-ZEB1 antibody
製品の詳細	Rabbit polyclonal to ZEB1
由来種	Rabbit
特異性	ab124512 is predicted not to crossreact with ZEB2.
アプリケーション	適用あり: ICC/IF, WB
種交差性	交差種: Human
免疫原	Synthetic peptide corresponding to Human ZEB1 (internal sequence). Database link: P37275
ポジティブ・コントロール	WB: HeLa whole cell lysate (ab150035). ICC: HeLa and K562 cells.
特記事項	<p>The Life Science industry has been in the grips of a reproducibility crisis for a number of years. Abcam is leading the way in addressing this with our range of recombinant monoclonal antibodies and knockout edited cell lines for gold-standard validation. Please check that this product meets your needs before purchasing.</p> <p>If you have any questions, special requirements or concerns, please send us an inquiry and/or contact our Support team ahead of purchase. Recommended alternatives for this product can be found below, along with publications, customer reviews and Q&As</p>

製品の特性

製品の状態	Liquid
保存方法	Shipped at 4°C. Store at +4°C short term (1-2 weeks). Store at +4°C.
バッファー	pH: 7.2 Preservative: 0.02% Sodium azide Constituent: 99% PBS
精製度	Immunogen affinity purified
ポリ/モノ	ポリクローナル
アイソタイプ	IgG

アプリケーション

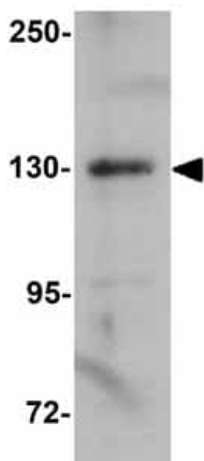
The Abpromise guarantee Abpromise保証は、 次のテスト済みアプリケーションにおけるab124512の使用に適用されます
 アプリケーションノートには、推奨の開始希釈率がありますが、適切な希釈率につきましてはご確認ください。

アプリケーション	Abreviews	特記事項
ICC/IF		Use a concentration of 20 µg/ml.
WB		Use a concentration of 1 - 2 µg/ml. Predicted molecular weight: 124 kDa.

ターゲット情報

機能	Inhibits interleukin-2 (IL-2) gene expression. May be responsible for transcriptional repression of the IL-2 gene. Enhances or represses the promoter activity of the ATP1A1 gene depending on the quantity of cDNA and on the cell type. Represses E-cadherin promoter and induces an epithelial-mesenchymal transition (EMT) by recruiting SMARCA4/BRG1. Represses BCL6 transcription in the presence of the corepressor CTBP1. Promotes tumorigenicity by repressing stemness-inhibiting microRNAs.
組織特異性	Colocalizes with SMARCA4/BRG1 in E-cadherin-negative cells from established lines, and stroma of normal colon as well as in de-differentiated epithelial cells at the invasion front of colorectal carcinomas (at protein level). Expressed in heart and skeletal muscle, but not in liver, spleen, or pancreas.
関連疾患	Defects in ZEB1 are the cause of posterior polymorphous corneal dystrophy type 3 (PPCD3) [MIM:609141]. PPCD is a rare disease involving metaplasia and overgrowth of corneal endothelial cells. In patients with PPCD, these cells manifest in an epithelial morphology and gene expression pattern, produce an aberrant basement membrane, and, sometimes, spread over the iris and nearby structures in a way that increases the risk for glaucoma. Defects in ZEB1 are the cause of corneal dystrophy Fuchs endothelial type 6 (FECD6) [MIM:613270]. It is an ocular disorder caused by loss of endothelium of the central cornea. It is characterized by focal wart-like guttata that arise from Descemet membrane and develop in the central cornea, epithelial blisters, reduced vision and pain. Descemet membrane is thickened by abnormal collagenous deposition.
配列類似性	Belongs to the delta-EF1/ZFH-1 C2H2-type zinc-finger family. Contains 7 C2H2-type zinc fingers. Contains 1 homeobox DNA-binding domain.
細胞内局在	Nucleus.

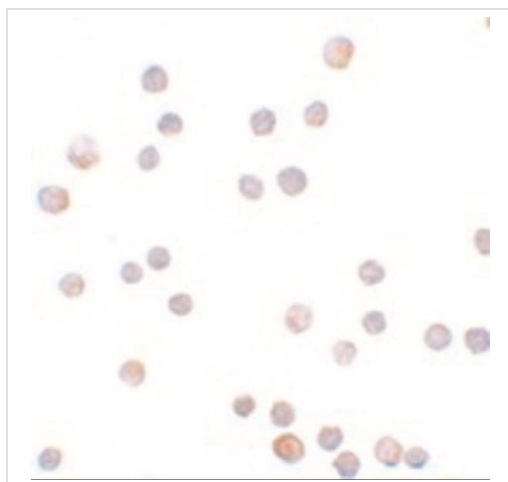
画像



Western blot - Anti-ZEB1 antibody (ab124512)

Anti-ZEB1 antibody (ab124512) at 1 µg/ml + HeLa cell lysate at 15 µg

Predicted band size: 124 kDa

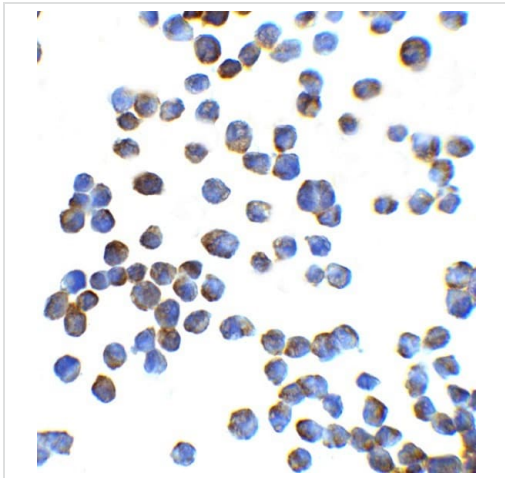


Immunocytochemistry - Anti-ZEB1 antibody (ab124512)

Immunocytochemistry of HeLa cells labeling ZEB1 with Anti-ZEB1 antibody (ab124512) at 20 µg/ml.

Immunocytochemistry/ Immunofluorescence - Anti-ZEB1 antibody (ab124512)

Immunocytochemistry/Immunofluorescence of ZEB1 in HeLa cells using ab124512 at 20 µg/ml.



Immunocytochemical analysis of K562 cells labelling ZEB1 with ab124512 at 2.5µg/mL.

Immunocytochemistry - Anti-ZEB1 antibody
(ab124512)

Please note: All products are "FOR RESEARCH USE ONLY. NOT FOR USE IN DIAGNOSTIC PROCEDURES"

Our Abpromise to you: Quality guaranteed and expert technical support

- Replacement or refund for products not performing as stated on the datasheet
- Valid for 12 months from date of delivery
- Response to your inquiry within 24 hours
- We provide support in Chinese, English, French, German, Japanese and Spanish
- Extensive multi-media technical resources to help you
- We investigate all quality concerns to ensure our products perform to the highest standards

If the product does not perform as described on this datasheet, we will offer a refund or replacement. For full details of the Abpromise, please visit <https://www.abcam.co.jp/abpromise> or contact our technical team.

Terms and conditions

- Guarantee only valid for products bought direct from Abcam or one of our authorized distributors