


Anti-ZDHHC9 antibody ab74504

3 References [画像数 2](#)

製品の概要

製品名	Anti-ZDHHC9 antibody
製品の詳細	Rabbit polyclonal to ZDHHC9
由来種	Rabbit
アプリケーション	適用あり: WB, IHC-P
種交差性	交差種: Human 交差が予測される動物種: Mouse, Rat 
免疫原	Synthetic peptide derived from C-terminal region of human ZDHHC9.
特記事項	<p>The Life Science industry has been in the grips of a reproducibility crisis for a number of years. Abcam is leading the way in addressing this with our range of recombinant monoclonal antibodies and knockout edited cell lines for gold-standard validation. Please check that this product meets your needs before purchasing.</p> <p>If you have any questions, special requirements or concerns, please send us an inquiry and/or contact our Support team ahead of purchase. Recommended alternatives for this product can be found below, along with publications, customer reviews and Q&As</p>

製品の特性

製品の状態	Liquid
保存方法	Shipped at 4°C. Upon delivery aliquot and store at -20°C. Avoid freeze / thaw cycles.
バッファー	pH: 7.40 Preservative: 0.02% Sodium azide Constituents: 50% Glycerol (glycerin, glycerine), 0.87% Sodium chloride, PBS
精製度	Immunogen affinity purified
ポリ/モノ	ポリクローナル
アイソタイプ	IgG

アプリケーション

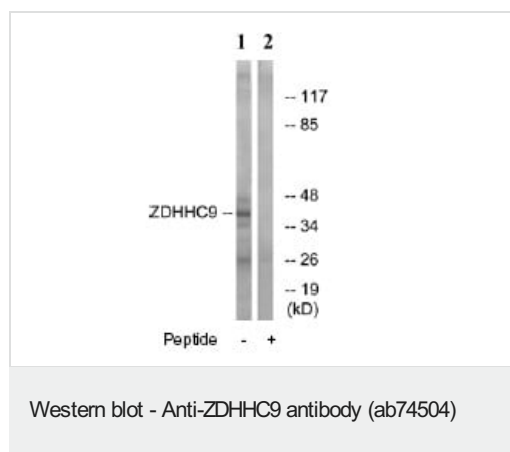
The Abpromise guarantee **Abpromise保証は、次のテスト済みアプリケーションにおけるab74504の使用に適用されます**
 アプリケーションノートには、推奨の開始希釈率がありますが、適切な希釈率につきましてはご検討ください。

アプリケーション	Abreviews	特記事項
WB		1/500 - 1/1000. Detects a band of approximately 41 kDa (predicted molecular weight: 41 kDa).
IHC-P		1/50 - 1/100.

ターゲット情報

機能	The ZDHHC9-GOLGA7 complex is a palmitoyltransferase specific for HRAS and NRAS.
組織特異性	Highly expressed in kidney, skeletal muscle, brain, lung and liver. Absent in thymus, spleen and leukocytes.
関連疾患	Defects in ZDHHC9 are the cause of mental retardation syndromic X-linked ZDHHC9-related (MRXSZ) [MIM:300799]. A disorder characterized by significantly sub-average general intellectual functioning associated with impairments in adaptative behavior and manifested during the developmental period. Some patients have marfanoid habitus as an additional feature.
配列類似性	Belongs to the DHHC palmitoyltransferase family. ERF2/ZDHHC9 subfamily. Contains 1 DHHC-type zinc finger.
ドメイン	The DHHC domain is required for palmitoyltransferase activity.
細胞内局在	Endoplasmic reticulum membrane. Golgi apparatus membrane.

画像



All lanes : Anti-ZDHHC9 antibody (ab74504) at 1/500 dilution

Lane 1 : extracts from COLO cells

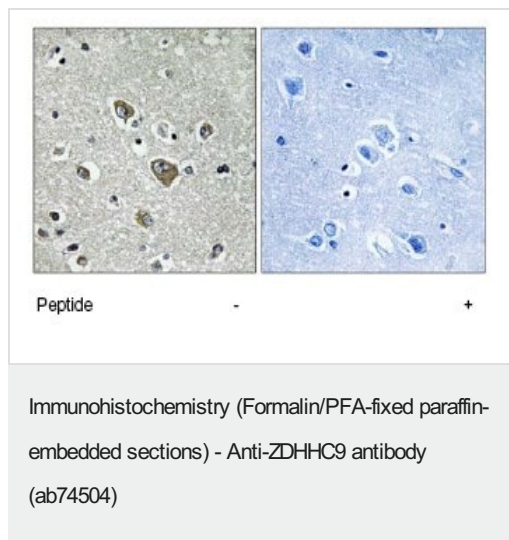
Lane 2 : extracts from COLO cells with immunising peptide at 10 µg

Lysates/proteins at 30 µg per lane.

Predicted band size: 41 kDa

Observed band size: 41 kDa

Additional bands at: 26 kDa, 34 kDa, 48 kDa. We are unsure as to the identity of these extra bands.



Immunohistochemistry analysis of paraffin-embedded human brain tissue using 1/50 ab74504. Left: untreated sample. Right: sample treated with immunising peptide.

Please note: All products are "FOR RESEARCH USE ONLY. NOT FOR USE IN DIAGNOSTIC PROCEDURES"

Our Abpromise to you: Quality guaranteed and expert technical support

- Replacement or refund for products not performing as stated on the datasheet
- Valid for 12 months from date of delivery
- Response to your inquiry within 24 hours
- We provide support in Chinese, English, French, German, Japanese and Spanish
- Extensive multi-media technical resources to help you
- We investigate all quality concerns to ensure our products perform to the highest standards

If the product does not perform as described on this datasheet, we will offer a refund or replacement. For full details of the Abpromise, please visit <https://www.abcam.co.jp/abpromise> or contact our technical team.

Terms and conditions

- Guarantee only valid for products bought direct from Abcam or one of our authorized distributors