

Anti-ZCCHC6 antibody ab76901

画像数 3

製品の概要

製品名	Anti-ZCCHC6 antibody
製品の詳細	Mouse polyclonal to ZCCHC6
由来種	Mouse
アプリケーション	適用あり: WB, IHC-P
種交差性	交差種: Human
免疫原	Full length human ZCCHC6 protein (aa 1-412 of AAH32456 or Swissprot id Q5VYS8-5).
ポジティブ・コントロール	Human liver tissue lysate; ZCCHC6 transfected 293T cell lysate.
特記事項	<p>The Life Science industry has been in the grips of a reproducibility crisis for a number of years. Abcam is leading the way in addressing this with our range of recombinant monoclonal antibodies and knockout edited cell lines for gold-standard validation. Please check that this product meets your needs before purchasing.</p> <p>If you have any questions, special requirements or concerns, please send us an inquiry and/or contact our Support team ahead of purchase. Recommended alternatives for this product can be found below, along with publications, customer reviews and Q&As</p>

製品の特性

製品の状態	Liquid
保存方法	Shipped at 4°C. Upon delivery aliquot. Store at -20°C or -80°C. Avoid freeze / thaw cycle.
バッファー	pH: 7.40 Constituent: 100% PBS
精製度	Protein A purified
ポリ/モノ	ポリクローナル
アイソタイプ	IgG

アプリケーション

The Abpromise guarantee **Abpromise保証は、** 次のテスト済みアプリケーションにおけるab76901の使用に適用されます
 アプリケーションノートには、推奨の開始希釈率がありますが、適切な希釈率につきましてはご検討ください。

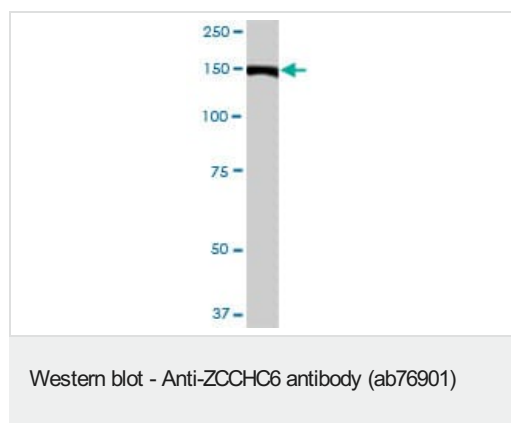
アプリケーション	Abreviews	特記事項
WB		Use a concentration of 1 - 5 µg/ml. Predicted molecular weight: 171, 48 kDa. Predicted molecular weight, isoform 1: 171 kDa, isoform 5: 48 kDa.
IHC-P		1/50.

ターゲット情報

関連性

ZCCHC6 contains 3 CCHC-type zinc fingers.

画像



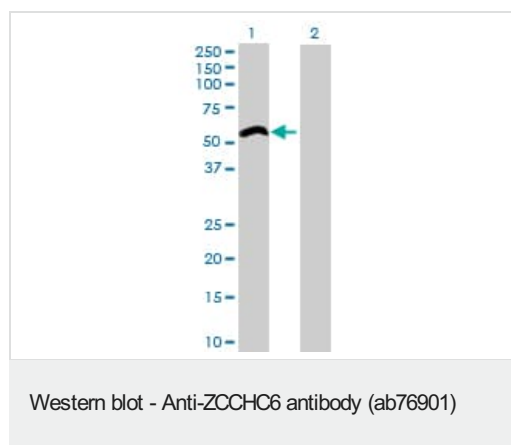
Anti-ZCCHC6 antibody (ab76901) at 5 µg/ml + human liver tissue lysate at 25 µg

Secondary

Goat Anti-Mouse IgG (H&L)-HRP at 1/2500 dilution

Predicted band size: 171, 48 kDa

Observed band size: 150 kDa



All lanes : Anti-ZCCHC6 antibody (ab76901) at 5 µg/ml

Lane 1 : ZCCHC6 transfected 293T cell lysate

Lane 2 : Non transfected 293T cell lysate

Lysates/proteins at 25 µg per lane.

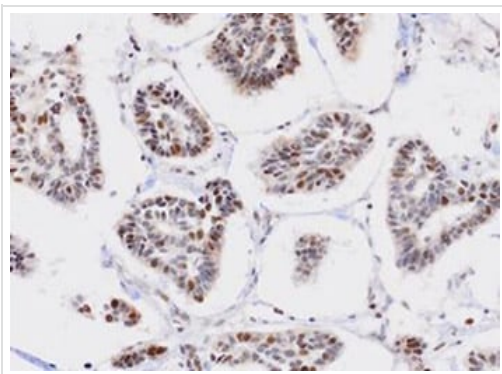
Secondary

All lanes : Goat Anti-Mouse IgG (H&L)-HRP at 1/2500 dilution

Predicted band size: 171, 48 kDa

Observed band size: 53 kDa

Note: predicted molecular weight for isoform 5 is 48 kDa.



Immunohistochemistry (Formalin/PFA-fixed paraffin-embedded sections) - Anti-ZCCHC6 antibody (ab76901)

ab76901 staining ZCCHC6 in human breast cancer tissue section by Immunohistochemistry (Formalin/ PFA fixed paraffin-embedded tissue sections). Tissue underwent antigen retrieval in 0.1 sodium citrate buffer. The primary antibody was used at 1/50 dilution and incubated with sample for 2 hours. The DAB staining method was used for detection.

Please note: All products are "FOR RESEARCH USE ONLY. NOT FOR USE IN DIAGNOSTIC PROCEDURES"

Our Abpromise to you: Quality guaranteed and expert technical support

- Replacement or refund for products not performing as stated on the datasheet
- Valid for 12 months from date of delivery
- Response to your inquiry within 24 hours
- We provide support in Chinese, English, French, German, Japanese and Spanish
- Extensive multi-media technical resources to help you
- We investigate all quality concerns to ensure our products perform to the highest standards

If the product does not perform as described on this datasheet, we will offer a refund or replacement. For full details of the Abpromise, please visit <https://www.abcam.co.jp/abpromise> or contact our technical team.

Terms and conditions

- Guarantee only valid for products bought direct from Abcam or one of our authorized distributors