


Anti-ZC3H13 antibody ab70802

★★★★★ [2 Abreviews](#) [5 References](#) [画像数 2](#)

製品の概要

製品名	Anti-ZC3H13 antibody
製品の詳細	Rabbit polyclonal to ZC3H13
由来種	Rabbit
アプリケーション	適用あり: IP, WB
種交差性	交差種: Mouse, Human 交差が予測される動物種: Rabbit, Horse, Cow, Chimpanzee, Rhesus monkey, Gorilla, Orangutan 

免疫原	Synthetic peptide corresponding to a region between residues 1175 and 1225 of Human ZC3H13 (NP_055885.2)
-----	--

特記事項	<p>The Life Science industry has been in the grips of a reproducibility crisis for a number of years. Abcam is leading the way in addressing this with our range of recombinant monoclonal antibodies and knockout edited cell lines for gold-standard validation. Please check that this product meets your needs before purchasing.</p> <p>If you have any questions, special requirements or concerns, please send us an inquiry and/or contact our Support team ahead of purchase. Recommended alternatives for this product can be found below, along with publications, customer reviews and Q&As</p>
------	---

製品の特性

製品の状態	Liquid
保存方法	Shipped at 4°C. Upon delivery aliquot and store at -20°C. Avoid freeze / thaw cycles.
バッファー	pH: 7 Preservative: 0.09% Sodium azide Constituents: 1.815% Tris, 1.764% Sodium citrate, 0.021% PBS
精製度	Immunogen affinity purified
ポリ/モノ	ポリクローナル
アイソタイプ	IgG

アプリケーション

The Abpromise guarantee

Abpromise保証は、次のテスト済みアプリケーションにおけるab70802の使用に適用されます

アプリケーションノートには、推奨の開始希釈率がありますが、適切な希釈率につきましてはご検討ください。

アプリケーション	Abreviews	特記事項
IP		Use at 2 µg/mg of lysate.
WB	★★★★★ (1)	1/2000 - 1/10000. Detects a band of approximately 240 kDa (predicted molecular weight: 197 kDa).

ターゲット情報

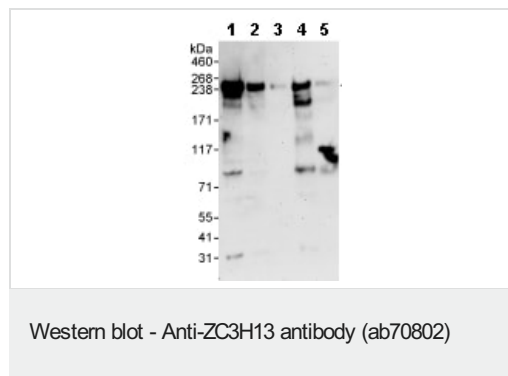
配列類似性

Contains 1 C3H1-type zinc finger.

翻訳後修飾

Phosphorylated upon DNA damage, probably by ATM or ATR.

画像



All lanes : Anti-ZC3H13 antibody (ab70802) at 0.04 µg/ml

Lane 1 : HeLa whole cell lysate at 50 µg

Lane 2 : HeLa whole cell lysate at 15 µg

Lane 3 : HeLa whole cell lysate at 5 µg

Lane 4 : 293T whole cell lysate at 50 µg

Lane 5 : NIH3T3 whole cell lysate at 50 µg

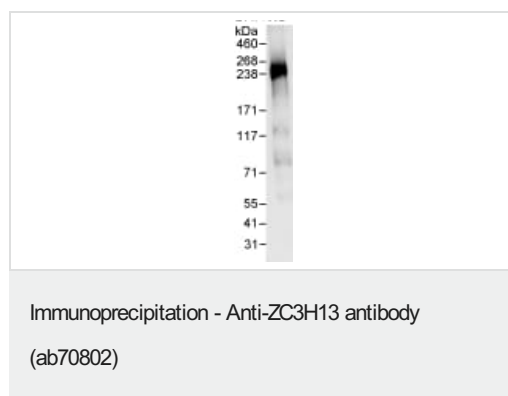
Developed using the ECL technique.

Predicted band size: 197 kDa

Observed band size: 240 kDa

Additional bands at: 200 kDa, 85 kDa. We are unsure as to the identity of these extra bands.

Exposure time: 3 minutes



Detection of ZC3H13 by Western Blot of Immunoprecipitate.
ab70802 at 1µg/ml staining ZC3H13 in HeLa whole cell lysate previously immunoprecipitated using ab70802 at 3µg/mg lysate (1 mg/IP; 20% of IP loaded/lane).

Detection: chemiluminescence with exposure time of 30 seconds.

Please note: All products are "FOR RESEARCH USE ONLY. NOT FOR USE IN DIAGNOSTIC PROCEDURES"

Our Abpromise to you: Quality guaranteed and expert technical support

- Replacement or refund for products not performing as stated on the datasheet
- Valid for 12 months from date of delivery
- Response to your inquiry within 24 hours
- We provide support in Chinese, English, French, German, Japanese and Spanish
- Extensive multi-media technical resources to help you
- We investigate all quality concerns to ensure our products perform to the highest standards

If the product does not perform as described on this datasheet, we will offer a refund or replacement. For full details of the Abpromise, please visit <https://www.abcam.co.jp/abpromise> or contact our technical team.

Terms and conditions

- Guarantee only valid for products bought direct from Abcam or one of our authorized distributors