


Anti-ZBTB40 antibody ab86330

画像数 3

製品の概要

| | |
|--------------|---|
| 製品名 | Anti-ZBTB40 antibody |
| 製品の詳細 | Rabbit polyclonal to ZBTB40 |
| 由来種 | Rabbit |
| アプリケーション | 適用あり: IHC-P, WB, IP |
| 種交差性 | 交差種: Human 交差が予測される動物種: Chimpanzee, Rhesus monkey, Gorilla, Orangutan  |
| 免疫原 | Synthetic peptide, corresponding to a region between residues 1140 and 1190 of human ZBTB40 (NP_055685.3) |
| ポジティブ・コントロール | HeLa and 293T whole cell lysates. |
| 特記事項 | <p>The Life Science industry has been in the grips of a reproducibility crisis for a number of years. Abcam is leading the way in addressing this with our range of recombinant monoclonal antibodies and knockout edited cell lines for gold-standard validation. Please check that this product meets your needs before purchasing.</p> <p>If you have any questions, special requirements or concerns, please send us an inquiry and/or contact our Support team ahead of purchase. Recommended alternatives for this product can be found below, along with publications, customer reviews and Q&As</p> |

製品の特性

| | |
|----------|---|
| 製品の状態 | Liquid |
| 保存方法 | Shipped at 4°C. Upon delivery aliquot and store at -20°C. Avoid freeze / thaw cycles. |
| バッファー | pH: 7 Preservative: 0.09% Sodium azide Constituent: Tris citrate/phosphate |
| 精製度 | Immunogen affinity purified |
| 特記事項(精製) | ab86330 was affinity purified using an epitope specific to ZBTB40 immobilized on solid support. |
| ポリモノ | ポリクローナル |
| アイソタイプ | IgG |

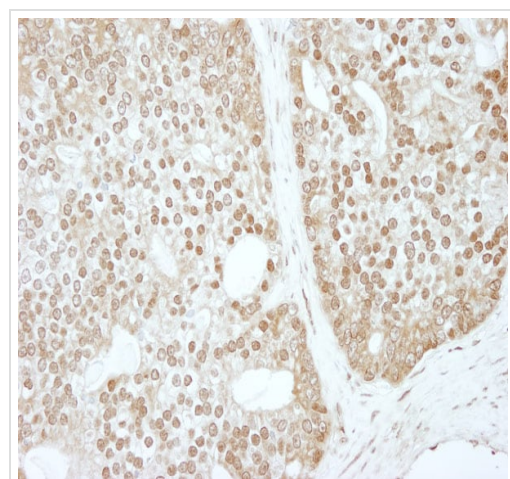
The Abpromise guarantee Abpromise保証は、 次のテスト済みアプリケーションにおけるab86330の使用に適用されます
アプリケーションノートには、推奨の開始希釈率がありますが、適切な希釈率につきましてはご検討ください。

| アプリケーション | Abreviews | 特記事項 |
|----------|-----------|---|
| IHC-P | | 1/1000 - 1/5000. Perform heat mediated antigen retrieval with citrate buffer pH 6 before commencing with IHC staining protocol. |
| WB | | 1/2000 - 1/10000. Predicted molecular weight: 138 kDa. |
| IP | | Use at 2-5 µg/mg of lysate. |

ターゲット情報

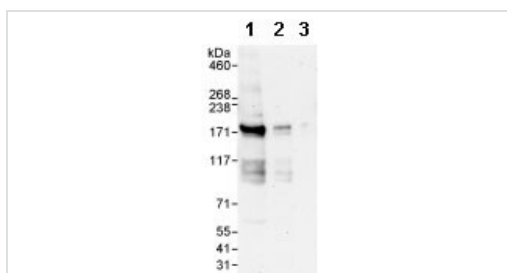
| | |
|-------|--|
| 機能 | May be involved in transcriptional regulation. |
| 配列類似性 | Belongs to the krueppel C2H2-type zinc-finger protein family. Contains 1 BTB (POZ) domain. Contains 12 C2H2-type zinc fingers. |
| 翻訳後修飾 | Phosphorylated upon DNA damage, probably by ATM or ATR. |
| 細胞内局在 | Nucleus. |

画像



Immunohistochemistry (Formalin/PFA-fixed paraffin-embedded sections) analysis of human prostate carcinoma tissue labelling ZBTB40 with ab86330 at 1/1000 (1µg/ml). Detection: DAB.

Immunohistochemistry (Formalin/PFA-fixed paraffin-embedded sections) - Anti-ZBTB40 antibody (ab86330)



Western blot - Anti-ZBTB40 antibody (ab86330)

All lanes : Anti-ZBTB40 antibody (ab86330) at 0.1 µg/ml

Lane 1 : 293T whole cell lysates at 50 µg

Lane 2 : 293T whole cell lysates at 15 µg

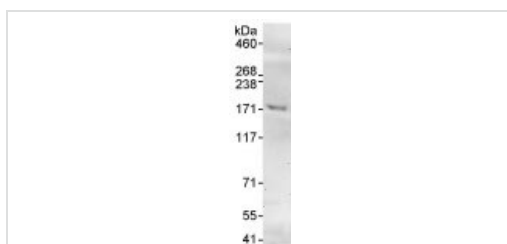
Lane 3 : 293T whole cell lysates at 5 µg

Developed using the ECL technique.

Predicted band size: 138 kDa

Observed band size: 170 kDa

Exposure time: 3 minutes



Immunoprecipitation - Anti-ZBTB40 antibody
(ab86330)

Detection of ZBTB40 by Western Blot of Immunoprecipitate.

ab86330, at 1 µg/ml, staining ZBTB40 in HeLa whole cell lysate immunoprecipitated using ab86330 at 3 µg/mg lysate (1 mg/IP; 20% of IP loaded/lane).

Detection: Chemiluminescence with an exposure time of 3 minutes.

Please note: All products are "FOR RESEARCH USE ONLY. NOT FOR USE IN DIAGNOSTIC PROCEDURES"

Our Abpromise to you: Quality guaranteed and expert technical support

- Replacement or refund for products not performing as stated on the datasheet
- Valid for 12 months from date of delivery
- Response to your inquiry within 24 hours
- We provide support in Chinese, English, French, German, Japanese and Spanish
- Extensive multi-media technical resources to help you
- We investigate all quality concerns to ensure our products perform to the highest standards

If the product does not perform as described on this datasheet, we will offer a refund or replacement. For full details of the Abpromise, please visit <https://www.abcam.co.jp/abpromise> or contact our technical team.

Terms and conditions

- Guarantee only valid for products bought direct from Abcam or one of our authorized distributors