


Anti-ZBT10 antibody ab80879

画像数 1

製品の概要

| | |
|--------------|---|
| 製品名 | Anti-ZBT10 antibody |
| 製品の詳細 | Rabbit polyclonal to ZBT10 |
| 由来種 | Rabbit |
| アプリケーション | 適用あり: WB |
| 種交差性 | 交差種: Human 交差が予測される動物種: Rat  |
| 免疫原 | Synthetic peptide corresponding to Human ZBT10 aa 300-400 conjugated to keyhole limpet haemocyanin. (Peptide available as ab90846) |
| ポジティブ・コントロール | This antibody gave a positive signal in human liver tissue lysate and the following whole cell lysates: HeLa; HEK293; HepG2; HUVEC; SHSY-5Y. |
| 特記事項 | <p>The Life Science industry has been in the grips of a reproducibility crisis for a number of years. Abcam is leading the way in addressing this with our range of recombinant monoclonal antibodies and knockout edited cell lines for gold-standard validation. Please check that this product meets your needs before purchasing.</p> <p>If you have any questions, special requirements or concerns, please send us an inquiry and/or contact our Support team ahead of purchase. Recommended alternatives for this product can be found below, along with publications, customer reviews and Q&As</p> |

製品の特性

| | |
|-------|--|
| 製品の状態 | Liquid |
| 保存方法 | Shipped at 4°C. Store at +4°C short term (1-2 weeks). Upon delivery aliquot. Store at -20°C or -80°C. Avoid freeze / thaw cycle. |
| バッファー | pH: 7.40 Preservative: 0.02% Sodium azide Constituent: PBS |
| | Batches of this product that have a concentration < 1mg/ml may have BSA added as a stabilising agent. If you would like information about the formulation of a specific lot, please contact our scientific support team who will be happy to help. |

| | |
|--------|-----------------------------|
| 精製度 | Immunogen affinity purified |
| ポリ/モノ | ポリクローナル |
| アイソタイプ | IgG |

アプリケーション

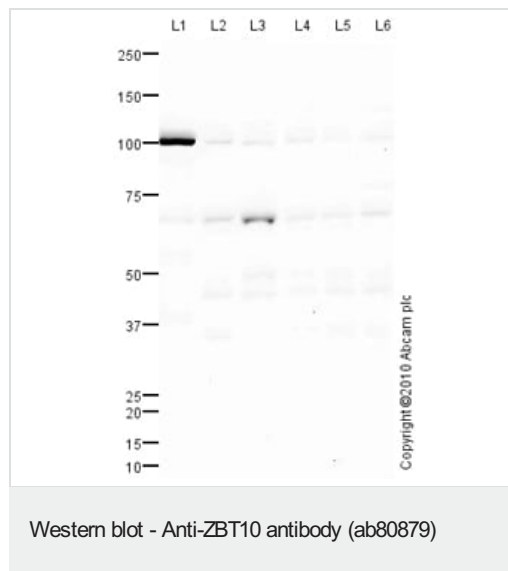
The Abpromise guarantee **Abpromise保証は、次のテスト済みアプリケーションにおけるab80879の使用に適用されます**
 アプリケーションノートには、推奨の開始希釈率がありますが、適切な希釈率につきましてはご確認ください。

| アプリケーション | Abreviews | 特記事項 |
|----------|-----------|---|
| WB | | Use a concentration of 1 µg/ml. Detects a band of approximately 100 kDa (predicted molecular weight: 92 kDa). |

ターゲット情報

| | |
|-------|--|
| 機能 | May be involved in transcriptional regulation. |
| 配列類似性 | Contains 1 BTB (POZ) domain. Contains 2 C2H2-type zinc fingers. |
| 翻訳後修飾 | Phosphorylated upon DNA damage, probably by ATM or ATR. |
| 細胞内局在 | Nucleus. |

画像



All lanes : Anti-ZBT10 antibody (ab80879) at 1 µg/ml

Lane 1 : Human liver tissue lysate - total protein (**ab29889**)

Lane 2 : HeLa (Human epithelial carcinoma cell line) Whole Cell Lysate

Lane 3 : HepG2 (Human hepatocellular liver carcinoma cell line) Whole Cell Lysate

Lane 4 : HEK293 (Human embryonic kidney cell line) Whole Cell Lysate

Lane 5 : HUVEC (Human Umbilical Vein Endothelial Cell) Whole Cell Lysate

Lane 6 : SHSY-5Y (Human neuroblastoma cell line) Whole Cell Lysate

Lysates/proteins at 10 µg per lane.

Secondary

All lanes : Goat polyclonal to Rabbit IgG - H&L - Pre-Adsorbed (HRP) at 1/3000 dilution

Developed using the ECL technique.

Performed under reducing conditions.

Predicted band size: 92 kDa

Observed band size: 100 kDa

Additional bands at: 46 kDa, 67 kDa (possible isoform). We are unsure as to the identity of these extra bands.

Exposure time: 20 minutes

ab80879 detects a strong band at 100 kDa which is thought to be the target protein as well as a band at 67 kDa. It is thought that the bands around 67 kDa corresponds to isoform 2 which has a predicted molecular weight of 65 kDa (SwissProt data).

Please note: All products are "FOR RESEARCH USE ONLY. NOT FOR USE IN DIAGNOSTIC PROCEDURES"

Our Abpromise to you: Quality guaranteed and expert technical support

- Replacement or refund for products not performing as stated on the datasheet
- Valid for 12 months from date of delivery
- Response to your inquiry within 24 hours
- We provide support in Chinese, English, French, German, Japanese and Spanish
- Extensive multi-media technical resources to help you
- We investigate all quality concerns to ensure our products perform to the highest standards

If the product does not perform as described on this datasheet, we will offer a refund or replacement. For full details of the Abpromise, please visit <https://www.abcam.co.jp/abpromise> or contact our technical team.

Terms and conditions

- Guarantee only valid for products bought direct from Abcam or one of our authorized distributors