




### Anti-YIF1A antibody ab121455

画像数 4

#### 製品の概要

製品名	Anti-YIF1A antibody
製品の詳細	Rabbit polyclonal to YIF1A
由来種	Rabbit
アプリケーション	適用あり: IHC-P
種交差性	交差種: Human 交差が予測される動物種: Rat 
免疫原	antigen sequence corresponding to amino acids 240-269 (ALMYFIVRSLRTAALGPDSMGGPVPRQLQ) of Human YIF1A. <a href="#"> Run BLAST with</a> <a href="#"> Run BLAST with</a>
ポジティブ・コントロール	IHC-P: Human prostate, colon, skeletal muscle and pancreas tissues.
特記事項	<p>The Life Science industry has been in the grips of a reproducibility crisis for a number of years. Abcam is leading the way in addressing this with our range of recombinant monoclonal antibodies and knockout edited cell lines for gold-standard validation. Please check that this product meets your needs before purchasing.</p> <p>If you have any questions, special requirements or concerns, please send us an inquiry and/or contact our Support team ahead of purchase. Recommended alternatives for this product can be found below, along with publications, customer reviews and Q&amp;As</p>

#### 製品の特性

製品の状態	Liquid
保存方法	Shipped at 4°C. Upon delivery aliquot and store at -20°C. Avoid freeze / thaw cycles.
バッファー	pH: 7.20 Preservative: 0.02% Sodium azide Constituents: 59% PBS, 40% Glycerol (glycerin, glycerine)
精製度	Immunogen affinity purified
ポリ/モノ	ポリクローナル
アイソタイプ	IgG

## アプリケーション

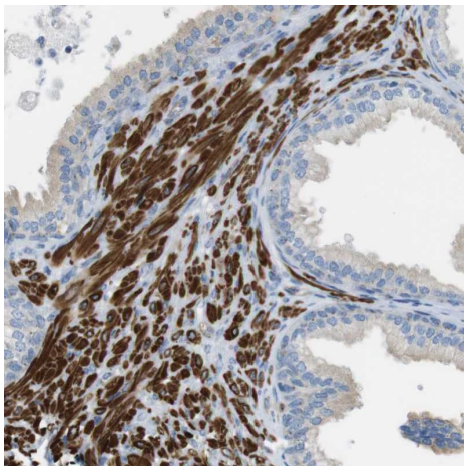
**The Abpromise guarantee** Abpromise保証は、 次のテスト済みアプリケーションにおけるab121455の使用に適用されます  
アプリケーションノートには、推奨の開始希釈率がありますが、適切な希釈率につきましてはご検討ください。

アプリケーション	Abreviews	特記事項
IHC-P		1/50 - 1/200. Perform heat mediated antigen retrieval with citrate buffer pH 6 before commencing with IHC staining protocol.

## ターゲット情報

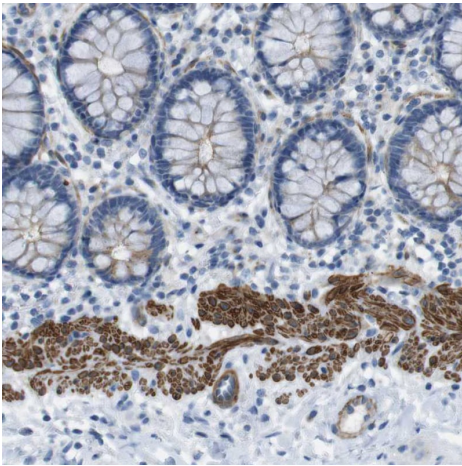
機能	Possible role in transport between endoplasmic reticulum and Golgi.
配列類似性	Belongs to the YIF1 family.
細胞内局在	Endoplasmic reticulum membrane. Golgi apparatus membrane. Cycles between the endoplasmic reticulum and the endoplasmic reticulum-Golgi intermediate compartment.

## 画像



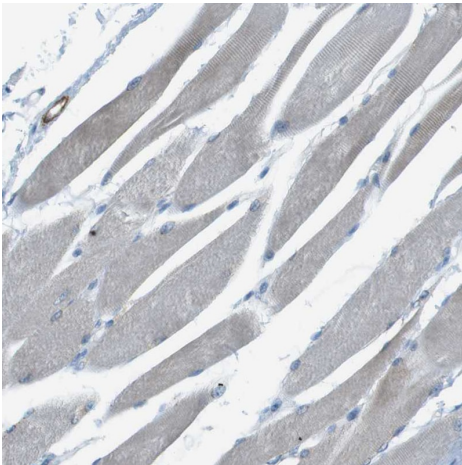
Immunohistochemical analysis of human prostate tissue labeling YIF1A with ab121455 at 1/200 dilution.

Immunohistochemistry (Formalin/PFA-fixed paraffin-embedded sections) - Anti-YIF1A antibody (ab121455)



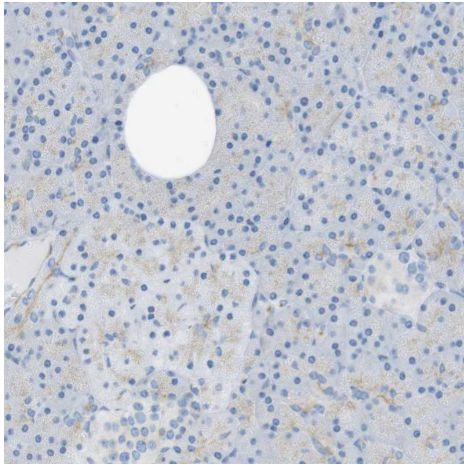
Immunohistochemical analysis of human colon tissue labeling YIF1A with ab121455 at 1/200 dilution.

Immunohistochemistry (Formalin/PFA-fixed paraffin-embedded sections) - Anti-YIF1A antibody (ab121455)



Immunohistochemical analysis of human skeletal muscle tissue labeling YIF1A with ab121455 at 1/200 dilution.

Immunohistochemistry (Formalin/PFA-fixed paraffin-embedded sections) - Anti-YIF1A antibody (ab121455)



Immunohistochemical analysis of human pancreas tissue labeling YIF1A with ab121455 at 1/200 dilution.

Immunohistochemistry (Formalin/PFA-fixed paraffin-embedded sections) - Anti-YIF1A antibody (ab121455)

**Please note:** All products are "FOR RESEARCH USE ONLY. NOT FOR USE IN DIAGNOSTIC PROCEDURES"

#### Our Abpromise to you: Quality guaranteed and expert technical support

---

- Replacement or refund for products not performing as stated on the datasheet
- Valid for 12 months from date of delivery
- Response to your inquiry within 24 hours
- We provide support in Chinese, English, French, German, Japanese and Spanish
- Extensive multi-media technical resources to help you
- We investigate all quality concerns to ensure our products perform to the highest standards

If the product does not perform as described on this datasheet, we will offer a refund or replacement. For full details of the Abpromise, please visit <https://www.abcam.co.jp/abpromise> or contact our technical team.

#### Terms and conditions

---

- Guarantee only valid for products bought direct from Abcam or one of our authorized distributors