

Anti-XRCC4 antibody ab97351

★★★★★ 3 Abbreviations 5 References 画像数 3

医薬用外劇物

製品の概要

製品名	Anti-XRCC4 antibody
製品の詳細	Rabbit polyclonal to XRCC4
由来種	Rabbit
アプリケーション	適用あり: IHC-P, WB, ICC/IF
種交差性	交差種: Human
免疫原	Synthetic peptide, corresponding to a region within amino acids 266-279 of Human XRCC4 (NP_071801)
ポジティブ・コントロール	WB: HeLa cell nuclear extract. IHC-P: HBL435 xenograft tissue. IF: HeLa cell.
特記事項	<p>The Life Science industry has been in the grips of a reproducibility crisis for a number of years. Abcam is leading the way in addressing this with our range of recombinant monoclonal antibodies and knockout edited cell lines for gold-standard validation. Please check that this product meets your needs before purchasing.</p> <p>If you have any questions, special requirements or concerns, please send us an inquiry and/or contact our Support team ahead of purchase. Recommended alternatives for this product can be found below, along with publications, customer reviews and Q&As</p>

製品の特性

製品の状態	Liquid
保存方法	Shipped at 4°C. Store at +4°C short term (1-2 weeks). Upon delivery aliquot. Store at -20°C long term. Avoid freeze / thaw cycle.
バッファー	<p>pH: 7.00</p> <p>Preservative: 0.01% Thimerosal (merthiolate)</p> <p>Constituents: 1.21% Tris, 0.75% Glycine, 10% Glycerol (glycerin, glycerine)</p>
精製度	Immunogen affinity purified
ポリ/モノ	ポリクローナル
アイソタイプ	IgG

アプリケーション

The Abpromise guarantee

Abpromise保証は、次のテスト済みアプリケーションにおけるab97351の使用に適用されます

アプリケーションノートには、推奨の開始希釈率がありますが、適切な希釈率につきましてはご確認ください。

アプリケーション	Abreviews	特記事項
IHC-P		1/100 - 1/1000.
WB	★★★★★ (1)	1/500 - 1/3000. Detects a band of approximately 55 kDa (predicted molecular weight: 38 kDa).
ICC/IF	★★★☆☆ (2)	1/100 - 1/1000.

ターゲット情報

機能

Involved in DNA non-homologous end joining (NHEJ) required for double-strand break repair and V(D)J recombination. Binds to DNA and to DNA ligase IV (LIG4). The LIG4-XRCC4 complex is responsible for the NHEJ ligation step, and XRCC4 enhances the joining activity of LIG4. Binding of the LIG4-XRCC4 complex to DNA ends is dependent on the assembly of the DNA-dependent protein kinase complex DNA-PK to these DNA ends.

組織特異性

Widely expressed.

配列類似性

Belongs to the XRCC4 family.

翻訳後修飾

Phosphorylated by PRKDC. The phosphorylation seems not to be necessary for binding to DNA. Phosphorylation by CK2 promotes interaction with APTX.

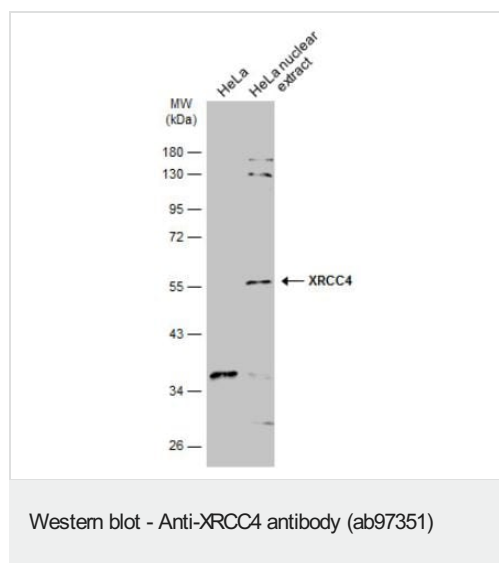
Monoubiquitinated.

Sumoylation at Lys-210 is required for nuclear localization and recombination efficiency. Has no effect on ubiquitination.

細胞内局在

Nucleus.

画像



All lanes : Anti-XRCC4 antibody (ab97351) at 1/500 dilution

Lane 1 : HeLa (human epithelial cell line from cervix adenocarcinoma) whole cell lysate

Lane 2 : HeLa cell nuclear extract

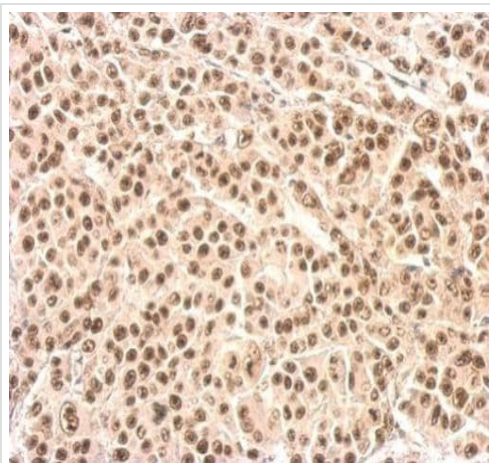
Lysates/proteins at 30 µg per lane.

Secondary

All lanes : HRP-conjugated anti-rabbit IgG antibody

Predicted band size: 38 kDa

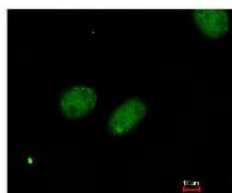
10% SDS-PAGE



Immunohistochemistry (Formalin/PFA-fixed paraffin-embedded sections) - Anti-XRCC4 antibody (ab97351)

Immunohistochemical analysis of paraffin-embedded HBL435 xenograft using ab97351 at 1/500 dilution.

Antigen Retrieval: Trilogy™ (EDTA based, pH 8.0) buffer, 15min.



Immunocytochemistry/ Immunofluorescence - Anti-XRCC4 antibody (ab97351)

Immunofluorescence analysis of paraformaldehyde-fixed HeLa (human epithelial cell line from cervix adenocarcinoma) cells labelling XRCC4 using ab97351 at 1/200 dilution. Lower image was also labelled with DNA probe.

Please note: All products are "FOR RESEARCH USE ONLY. NOT FOR USE IN DIAGNOSTIC PROCEDURES"

Our Abpromise to you: Quality guaranteed and expert technical support

- Replacement or refund for products not performing as stated on the datasheet
- Valid for 12 months from date of delivery
- Response to your inquiry within 24 hours
- We provide support in Chinese, English, French, German, Japanese and Spanish
- Extensive multi-media technical resources to help you
- We investigate all quality concerns to ensure our products perform to the highest standards

If the product does not perform as described on this datasheet, we will offer a refund or replacement. For full details of the Abpromise, please visit <https://www.abcam.co.jp/abpromise> or contact our technical team.

Terms and conditions

- Guarantee only valid for products bought direct from Abcam or one of our authorized distributors