

Anti-XPO6 antibody ab72333

2 References [画像数 1](#)

製品の概要

製品名	Anti-XPO6 antibody
製品の詳細	Rabbit polyclonal to XPO6
由来種	Rabbit
アプリケーション	適用あり: IP
種交差性	交差種: Human 交差が予測される動物種: Mouse, Rat, Horse, Chicken, Guinea pig, Cow, Dog, Turkey, Pig, Xenopus laevis, Chimpanzee, Rhesus monkey, Gorilla, Orangutan, Xenopus tropicalis, Platypus
免疫原	Synthetic peptide from a region between residue 1075 and 1125 of human XPO6, NP_055986.1.
ポジティブ・コントロール	Whole cell lysate from Hela cells.
特記事項	<p>The Life Science industry has been in the grips of a reproducibility crisis for a number of years. Abcam is leading the way in addressing this with our range of recombinant monoclonal antibodies and knockout edited cell lines for gold-standard validation. Please check that this product meets your needs before purchasing.</p> <p>If you have any questions, special requirements or concerns, please send us an inquiry and/or contact our Support team ahead of purchase. Recommended alternatives for this product can be found below, along with publications, customer reviews and Q&As</p>

製品の特性

製品の状態	Liquid
保存方法	Shipped at 4°C. Upon delivery aliquot and store at -20°C. Avoid freeze / thaw cycles.
バッファー	pH: 7 Preservative: 0.09% Sodium azide Constituents: 1.815% Tris, 1.764% Sodium citrate, 0.021% PBS
精製度	Immunogen affinity purified
ポリ/モノ	ポリクローナル
アイソタイプ	IgG

アプリケーション

The Abpromise guarantee **Abpromise保証は、次のテスト済みアプリケーションにおけるab72333の使用に適用されます**
 アプリケーションノートには、推奨の開始希釈率がありますが、適切な希釈率につきましてはご検討ください。

アプリケーション	Abreviews	特記事項
IP		

追加情報

IP: Use at 2-5µg/mg of lysate.

Is unsuitable for WB. This antibody can be used for WB of enriched sources of XPO6 e.g. immunoprecipitated XPO6, but it has not performed satisfactorily on crude preparations (e.g. whole cell lysate).

Not yet tested in other applications.
 Optimal dilutions/concentrations should be determined by the end user.

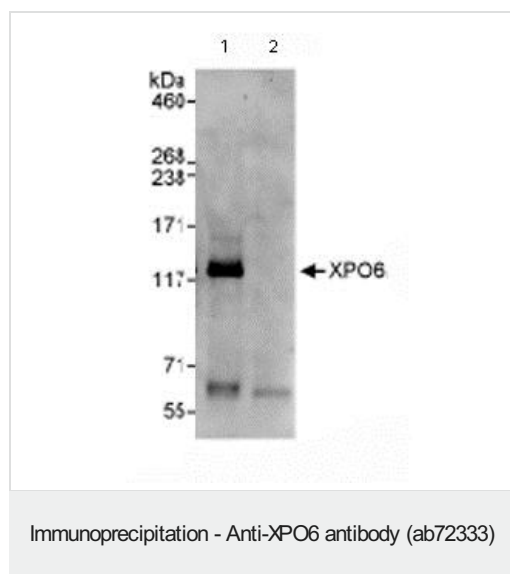
ターゲット情報

機能 Mediates the nuclear export of actin and profilin-actin complexes in somatic cells.

配列類似性 Belongs to the exportin family.
 Contains 1 importin N-terminal domain.

細胞内局在 Nucleus. Cytoplasm. Shuttles between the nucleus and the cytoplasm.

画像



Immunoprecipitation/ Western Blot of XPO6.
 Lane 1: ab72333 at 3µg/mg whole cell lysate.
 Lane 2: Control IgG.
 ab72333 at 1µg/ml for WB.
 Whole cell lysate from Hela cells at 1mg for IP, 20% of IP loaded.
 Chemiluminescence with an exposure time of 30 seconds.

Please note: All products are "FOR RESEARCH USE ONLY. NOT FOR USE IN DIAGNOSTIC PROCEDURES"

Our Abpromise to you: Quality guaranteed and expert technical support

- Replacement or refund for products not performing as stated on the datasheet
- Valid for 12 months from date of delivery
- Response to your inquiry within 24 hours

- We provide support in Chinese, English, French, German, Japanese and Spanish
- Extensive multi-media technical resources to help you
- We investigate all quality concerns to ensure our products perform to the highest standards

If the product does not perform as described on this datasheet, we will offer a refund or replacement. For full details of the Abpromise, please visit <https://www.abcam.co.jp/abpromise> or contact our technical team.

Terms and conditions

- Guarantee only valid for products bought direct from Abcam or one of our authorized distributors