


Anti-XPA antibody [5F12] ab65963

KO 評価済

★★★★☆ 1 Abreviews 8 References 画像数 4

製品の概要

製品名	Anti-XPA antibody [5F12]
製品の詳細	Mouse monoclonal [5F12] to XPA
由来種	Mouse
アプリケーション	適用あり: WB, ICC/IF
種交差性	交差種: Human 交差が予測される動物種: Mouse 
免疫原	Recombinant full length XPA protein (Human)
エピトープ	Amino acids 30-47.
ポジティブ・コントロール	WB: HeLa and 293T cell lysates.
特記事項	<p>The Life Science industry has been in the grips of a reproducibility crisis for a number of years. Abcam is leading the way in addressing this with our range of recombinant monoclonal antibodies and knockout edited cell lines for gold-standard validation. Please check that this product meets your needs before purchasing.</p> <p>If you have any questions, special requirements or concerns, please send us an inquiry and/or contact our Support team ahead of purchase. Recommended alternatives for this product can be found below, along with publications, customer reviews and Q&As</p>

製品の特性

製品の状態	Liquid
保存方法	Shipped at 4°C. Store at -20°C. Stable for 12 months at -20°C.
バッファー	pH: 6 Constituents: PBS, 50% Glycerol (glycerin, glycerine)
精製度	Ion Exchange Chromatography
ポリ/モノ	モノクローナル
クローン名	5F12
アイソタイプ	IgG2b

アプリケーション

The Abpromise guarantee

Abpromise保証は、次のテスト済みアプリケーションにおけるab65963の使用に適用されます

アプリケーションノートには、推奨の開始希釈率がありますが、適切な希釈率につきましてはご検討ください。

アプリケーション	Abreviews	特記事項
WB	★★★★☆ (1)	Use a concentration of 0.1 - 1 µg/ml. Detects a band of approximately 38 kDa (predicted molecular weight: 31 kDa).
ICC/IF		Use at an assay dependent concentration.

ターゲット情報

機能

Involved in DNA excision repair. Initiates repair by binding to damaged sites with various affinities, depending on the photoproduct and the transcriptional state of the region. Required for UV-induced CHK1 phosphorylation and the recruitment of CEP164 to cyclobutane pyrimidine dimers (CPD), sites of DNA damage after UV irradiation.

組織特異性

Expressed in various cell lines and in skin fibroblasts.

関連疾患

Defects in XPA are a cause of xeroderma pigmentosum complementation group A (XP-A) [MIM:278700]; also known as xeroderma pigmentosum type 1 (XP1). XP-A is a rare human autosomal recessive disease characterized by solar sensitivity, high predisposition for developing cancers on areas exposed to sunlight and, in some cases, neurological abnormalities. Group A patients show the most severe skin symptoms and progressive neurological disorders.

配列類似性

Belongs to the XPA family.

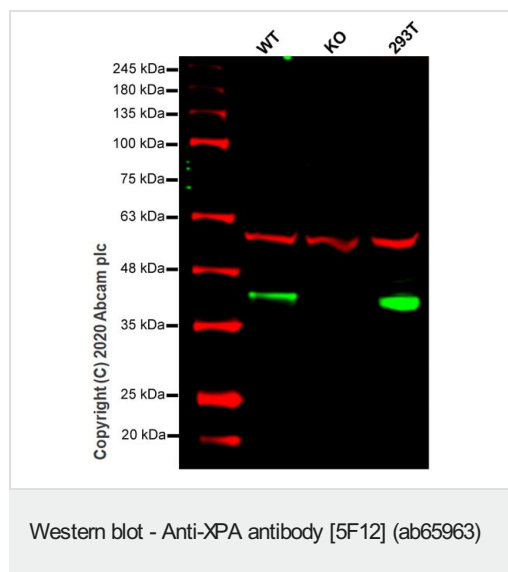
翻訳後修飾

Phosphorylated upon DNA damage, probably by ATM or ATR.
Ubiquitinated by HERC2 leading to degradation by the proteasome.

細胞内局在

Nucleus.

画像



All lanes : Anti-XPA antibody [5F12] (ab65963) at 1/500 dilution

Lane 1 : Wild-type HeLa cell lysate

Lane 2 : XPA knockout HeLa cell lysate

Lane 3 : 293T cell lysate

Lysates/proteins at 20 µg per lane.

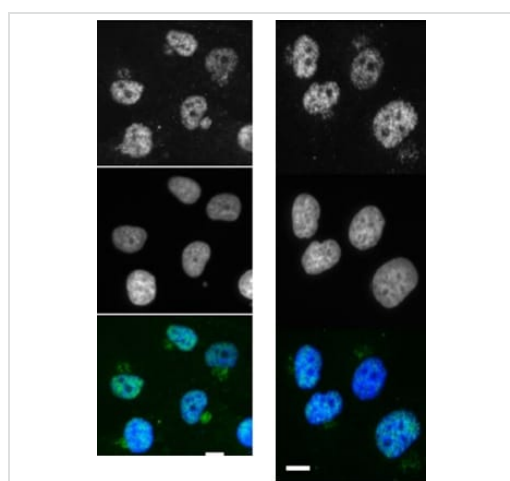
Performed under reducing conditions.

Predicted band size: 31 kDa

Observed band size: 38 kDa

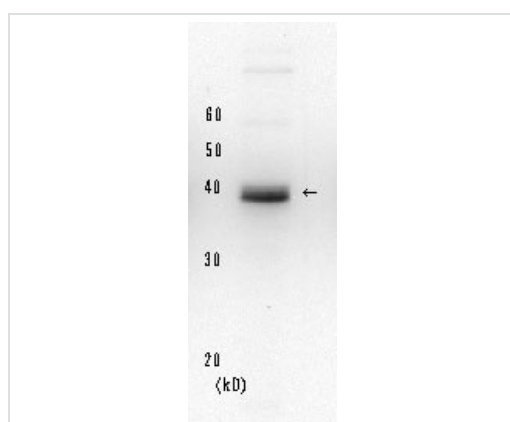
Lanes 1-3: Merged signal (red and green). Green - ab65963 observed at 38 kDa. Red - loading control, **ab52866** observed at 50 kDa.

ab65963 Anti-XPA antibody [5F12] was shown to specifically react with XPA in wild-type HeLa cells. Loss of signal was observed when knockout cell line **ab264663** (knockout cell lysate **ab258764**) was used. Wild-type and XPA knockout samples were subjected to SDS-PAGE. ab65963 and Anti-alpha Tubulin antibody [EP1332Y] - Loading Control (**ab52866**) were incubated overnight at 4°C at 1 in 500 dilution and 1 in 20000 dilution respectively. Blots were developed with Goat anti-Mouse IgG H&L (IRDye® 800CW) preadsorbed (**ab216772**) and Goat anti-Rabbit IgG H&L (IRDye® 680RD) preadsorbed (**ab216777**) secondary antibodies at 1 in 10000 dilution for 1 hour at room temperature before imaging.



Immunocytochemistry/ Immunofluorescence - Anti-XPA antibody [5F12] (ab65963)

Immunofluorescent staining of human fibroblast cells (GM0637) using ab65963 at a dilution of 1/100. The cells were non-irradiated (left) or irradiated with UV at 20 J/m² (right), fixed after 30 minutes with paraformaldehyde and counter-stained with Hoescht. The top panels show the antibody staining, the middle panels show the Hoescht staining and the bottom panels are a merge of the two images. The secondary antibody was an Alexa Fluor® 488 conjugated goat anti-mouse IgG, used at a dilution of 1/5000.

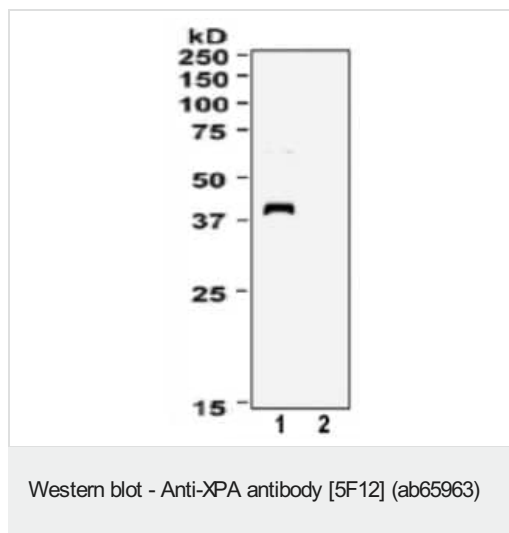


Western blot - Anti-XPA antibody [5F12] (ab65963)

Anti-XPA antibody [5F12] (ab65963) at 0.1 µg/ml + Crude extract of HeLa cells at 200 µg

Predicted band size: 31 kDa

Observed band size: 38 kDa



All lanes : Anti-XPA antibody [5F12] (ab65963) at 1/2000 dilution

Lane 1 : HeLa cell extract (XPA wild type)

Lane 2 : XP12ROSV cell extract (XPA deficient)

Predicted band size: 31 kDa

Please note: All products are "FOR RESEARCH USE ONLY. NOT FOR USE IN DIAGNOSTIC PROCEDURES"

Our Abpromise to you: Quality guaranteed and expert technical support

- Replacement or refund for products not performing as stated on the datasheet
- Valid for 12 months from date of delivery
- Response to your inquiry within 24 hours
- We provide support in Chinese, English, French, German, Japanese and Spanish
- Extensive multi-media technical resources to help you
- We investigate all quality concerns to ensure our products perform to the highest standards

If the product does not perform as described on this datasheet, we will offer a refund or replacement. For full details of the Abpromise, please visit <https://www.abcam.co.jp/abpromise> or contact our technical team.

Terms and conditions

- Guarantee only valid for products bought direct from Abcam or one of our authorized distributors