


Anti-Wwp2 antibody ab103527

15 References **画像数 3**

製品の概要

製品名	Anti-Wwp2 antibody
製品の詳細	Rabbit polyclonal to Wwp2
由来種	Rabbit
アプリケーション	適用あり: WB, IP
種交差性	交差種: Mouse, Human 交差が予測される動物種: Chimpanzee, Rhesus monkey, Gorilla, Orangutan 
免疫原	Synthetic peptide corresponding to Human Wwp2 aa 200-300. Database link: <u>O00308</u>
ポジティブ・コントロール	HeLa, 293T, Jurkat and mouse NIH3T3 whole cell lysate
特記事項	<p>The Life Science industry has been in the grips of a reproducibility crisis for a number of years. Abcam is leading the way in addressing this with our range of recombinant monoclonal antibodies and knockout edited cell lines for gold-standard validation. Please check that this product meets your needs before purchasing.</p> <p>If you have any questions, special requirements or concerns, please send us an inquiry and/or contact our Support team ahead of purchase. Recommended alternatives for this product can be found below, along with publications, customer reviews and Q&As</p>

製品の特性

製品の状態	Liquid
保存方法	Shipped at 4°C. Upon delivery aliquot and store at -20°C. Avoid freeze / thaw cycles.
バッファー	pH: 7 Preservative: 0.09% Sodium azide Constituent: Tris citrate/phosphate
精製度	Immunogen affinity purified
ポリ/モノ	ポリクローナル
アイソタイプ	IgG

アプリケーション

The Abpromise guarantee Abpromise保証は、 次のテスト済みアプリケーションにおけるab103527の使用に適用されます
アプリケーションノートには、推奨の開始希釈率がありますが、適切な希釈率につきましてはご確認ください。

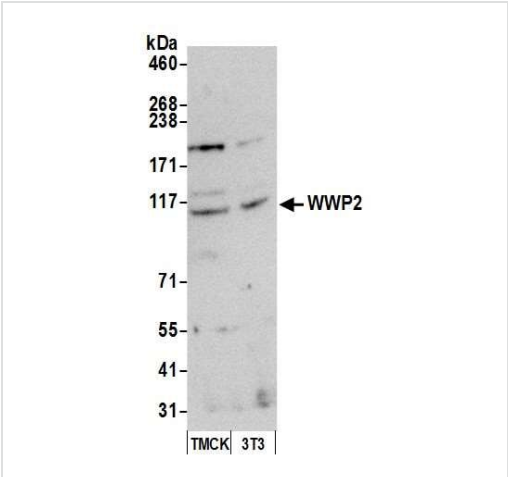
アプリケーション	Abreviews	特記事項
WB		1/2000 - 1/10000. Predicted molecular weight: 99 kDa.
IP		Use at 2-5 µg/mg of lysate.

ターゲット情報

関連性 Wwp2 is a HECT domain containing E3 ubiquitin protein ligase. Wwp2 specifically interacts with Rpb1 and is responsible for targeting it for ubiquitination.

細胞内局在 Nuclear

画像



Western blot - Anti-Wwp2 antibody (ab103527)

All lanes : Anti-Wwp2 antibody (ab103527) at 0.1 µg/ml

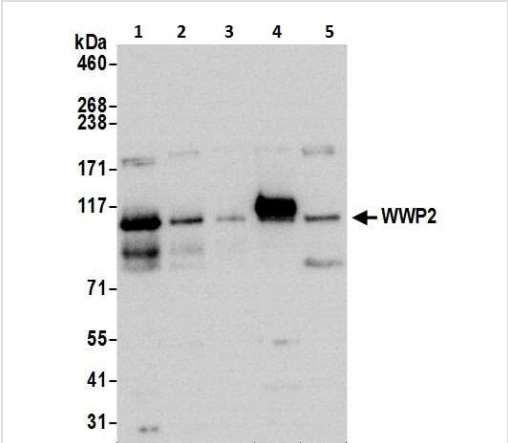
Lane 1 : TCMK-1 (mouse kidney epithelial cell line) whole cell lysate

Lane 2 : NIH/3T3 (mouse embryo fibroblast cell line) whole cell lysate

Lysates/proteins at 50 µg per lane.

Predicted band size: 99 kDa

Exposure time: 30 seconds



Western blot - Anti-Wwp2 antibody (ab103527)

All lanes : Anti-Wwp2 antibody (ab103527) at 0.1 µg/ml

Lane 1 : 293T cell lysate at 50 µg

Lane 2 : 293T cell lysate at 15 µg

Lane 3 : 293T cell lysate at 5 µg

Lane 4 : HeLa cell lysate at 50 µg

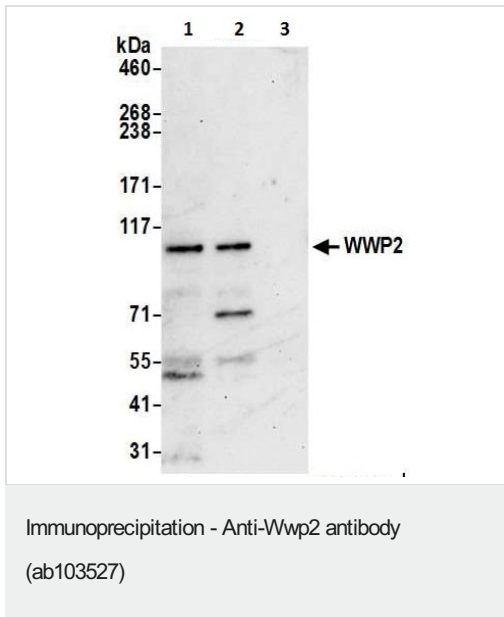
Lane 5 : Jurkat cell lysate at 50 µg

Predicted band size: 99 kDa

Exposure time: 30 seconds

Cells were prepared using NETN lysis buffer.

Detection: Chemiluminescence



ab103527 at 1 used at 6 µg/reaction immunoprecipitating Wwp2 in HEK293T cell lysate.

Lane 1: ab103527 + HEK293T cell lysate

Lane 2: Rabbit anti-WWP2 Antibody instead of ab103527 in HEK293T cell lysate

Lane 3: Control IgG instead of **ab32562** in HEK293T cell lysate.

For blotting ab103527 was used at 1 µg/mL.

Detection: Chemiluminescence

Exposure time: 30 seconds

Please note: All products are "FOR RESEARCH USE ONLY. NOT FOR USE IN DIAGNOSTIC PROCEDURES"

Our Abpromise to you: Quality guaranteed and expert technical support

- Replacement or refund for products not performing as stated on the datasheet
- Valid for 12 months from date of delivery
- Response to your inquiry within 24 hours
- We provide support in Chinese, English, French, German, Japanese and Spanish
- Extensive multi-media technical resources to help you
- We investigate all quality concerns to ensure our products perform to the highest standards

If the product does not perform as described on this datasheet, we will offer a refund or replacement. For full details of the Abpromise, please visit <https://www.abcam.co.jp/abpromise> or contact our technical team.

Terms and conditions

- Guarantee only valid for products bought direct from Abcam or one of our authorized distributors