

Anti-WRNIP1/WHIP antibody ab99316

★★★★★ [1 Abreviews](#) [1 References](#) [画像数 4](#)

製品の概要

製品名	Anti-WRNIP1/WHIP antibody
製品の詳細	Rabbit polyclonal to WRNIP1/WHIP
由来種	Rabbit
アプリケーション	適用あり: WB, IP, IHC-P
種交差性	交差種: Human 交差が予測される動物種: Rat, Horse, Dog, Chimpanzee, Ferret, Rhesus monkey, Gorilla, Chinese hamster, Orangutan 
免疫原	Synthetic peptide corresponding to Human WRNIP1/WHIP aa 400-500. NP_064520.2 Database link: Q96S55
ポジティブ・コントロール	HeLa whole cell lysate
特記事項	<p>The Life Science industry has been in the grips of a reproducibility crisis for a number of years. Abcam is leading the way in addressing this with our range of recombinant monoclonal antibodies and knockout edited cell lines for gold-standard validation. Please check that this product meets your needs before purchasing.</p> <p>If you have any questions, special requirements or concerns, please send us an inquiry and/or contact our Support team ahead of purchase. Recommended alternatives for this product can be found below, along with publications, customer reviews and Q&As</p>

製品の特性

製品の状態	Liquid
保存方法	Shipped at 4°C. Upon delivery aliquot and store at -20°C. Avoid freeze / thaw cycles.
バッファー	pH: 7 Preservative: 0.09% Sodium azide Constituent: Tris citrate/phosphate
精製度	Immunogen affinity purified
特記事項 (精製)	ab99316 was affinity purified using an epitope specific to WRNIP1/WHIP immobilized on solid support
ポリ/モノ	ポリクローナル
アイソタイプ	IgG

アプリケーション

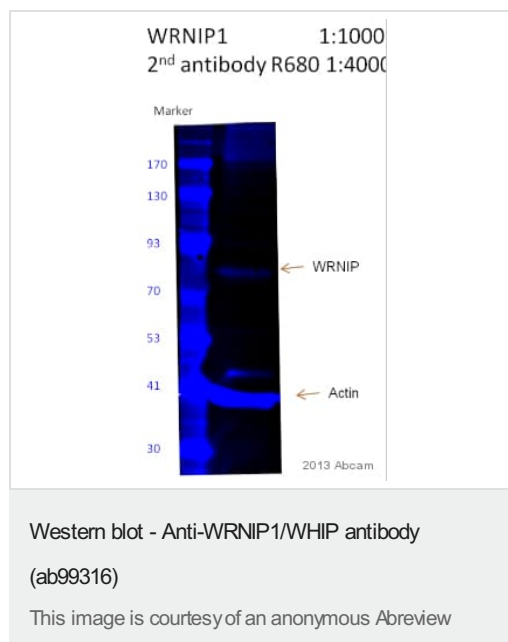
The Abpromise guarantee Abpromise保証は、次のテスト済みアプリケーションにおけるab99316の使用に適用されます
アプリケーションノートには、推奨の開始希釈率がありますが、適切な希釈率につきましてはご検討ください。

アプリケーション	Abreviews	特記事項
WB	★★★★★ (1)	1/2000 - 1/10000. Predicted molecular weight: 69 kDa.
IP		Use at 2-5 µg/mg of lysate.
IHC-P		1/500 - 1/2000. Perform heat mediated antigen retrieval with citrate buffer pH 6 before commencing with IHC staining protocol.

ターゲット情報

機能	Functions as a modulator for initiation or reinitiation events during DNA polymerase delta-mediated DNA synthesis. Has an intrinsic ATPase activity that functions as a sensor of DNA damage or of arrested replication forks and regulates the extent of DNA synthesis.
組織特異性	Ubiquitously expressed.
配列類似性	Belongs to the AAA ATPase family. Contains 1 UBZ-type zinc finger.
翻訳後修飾	Sumoylated by SUMO1 and SUMO2/3.
細胞内局在	Nucleus. Colocalizes with WRN in granular structures in the nucleus.

画像



Anti-WRNIP1/WHIP antibody (ab99316) at 1/1000 dilution + Mouse T cell lysate at 80 µg

Secondary

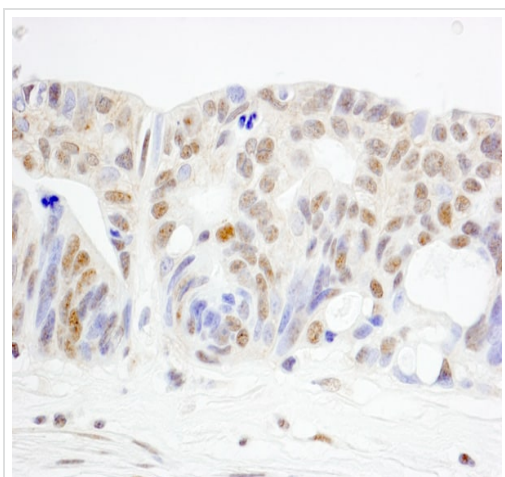
IRDye® 680-conjugated Goat anti-rabbit IgG polyclonal at 1/4000 dilution

Performed under reducing conditions.

Predicted band size: 69 kDa

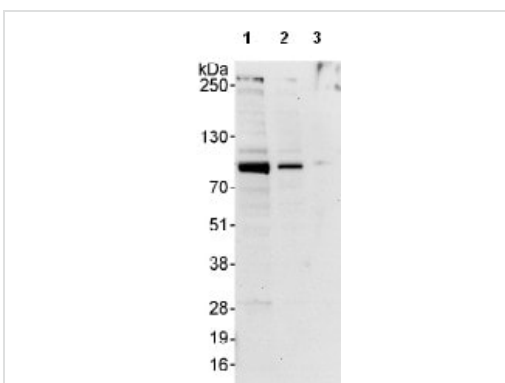
Observed band size: 75 kDa

Exposure time: 5 minutes



Immunohistochemistry (Formalin/PFA-fixed paraffin-embedded sections) - Anti-WRNIP1/WHIP antibody (ab99316)

Immunohistochemistry (Formalin/PFA-fixed paraffin-embedded sections) analysis of human ovarian carcinoma tissue labelling WRNIP1/WHIP with ab99316 at 1/1000 (1 µg/ml). Detection: DAB.



Western blot - Anti-WRNIP1/WHIP antibody (ab99316)

All lanes : Anti-WRNIP1/WHIP antibody (ab99316) at 0.4 µg/ml

Lane 1 : HeLa whole cell lysate at 50 µg

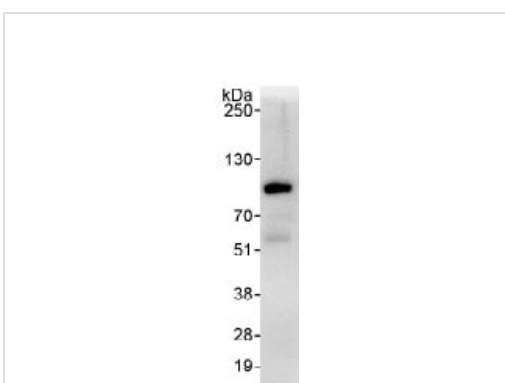
Lane 2 : HeLa whole cell lysate at 15 µg

Lane 3 : HeLa whole cell lysate at 5 µg

Developed using the ECL technique.

Predicted band size: 69 kDa

Exposure time: 30 seconds



Immunoprecipitation - Anti-WRNIP1/WHIP antibody (ab99316)

Detection of WRNIP1/WHIP by Western Blot of Immunoprecipitate. ab99316, at 1 µg/ml, staining WRNIP1/WHIP in HeLa whole cell lysate immunoprecipitated using ab99316 at 3 µg/mg lysate (1 mg/IP; 20% of IP loaded/lane).

Detection: Chemiluminescence with exposure time of 30 seconds.

Our Abpromise to you: Quality guaranteed and expert technical support

- Replacement or refund for products not performing as stated on the datasheet
- Valid for 12 months from date of delivery
- Response to your inquiry within 24 hours

- We provide support in Chinese, English, French, German, Japanese and Spanish
- Extensive multi-media technical resources to help you
- We investigate all quality concerns to ensure our products perform to the highest standards

If the product does not perform as described on this datasheet, we will offer a refund or replacement. For full details of the Abpromise, please visit <https://www.abcam.co.jp/abpromise> or contact our technical team.

Terms and conditions

- Guarantee only valid for products bought direct from Abcam or one of our authorized distributors