

### Anti-Wnt11 antibody ab96730

★★★★★ [1 Abreviews](#) [4 References](#) [画像数 8](#)

#### 製品の概要

製品名	Anti-Wnt11 antibody
製品の詳細	Rabbit polyclonal to Wnt11
由来種	Rabbit
アプリケーション	<b>適用あり:</b> WB, ICC/IF, IHC-P
種交差性	<b>交差種:</b> Mouse, Human
免疫原	Recombinant fragment, corresponding to a region within amino acids 1-280 of Human Wnt11 (NP_004617).
ポジティブ・コントロール	WB: HEK-293T, A431, COLO 205 cell lysate, mouse heart white adipose tissue extract. IHC-P: Lung SCC xenograft and mouse colon tissue. IF: HeLa cells.
特記事項	<p>The Life Science industry has been in the grips of a reproducibility crisis for a number of years. Abcam is leading the way in addressing this with our range of recombinant monoclonal antibodies and knockout edited cell lines for gold-standard validation. Please check that this product meets your needs before purchasing.</p> <p>If you have any questions, special requirements or concerns, please send us an inquiry and/or contact our Support team ahead of purchase. Recommended alternatives for this product can be found below, along with publications, customer reviews and Q&amp;As</p>

#### 製品の特性

製品の状態	Liquid
保存方法	Shipped at 4°C. Upon delivery aliquot and store at -20°C or -80°C. Avoid repeated freeze / thaw cycles.
バッファー	pH: 7.00 Preservative: 0.025% Proclin 300 Constituents: 79% PBS, 20% Glycerol (glycerin, glycerine)
精製度	Immunogen affinity purified
ポリ/モノ	ポリクローナル
アイソタイプ	IgG

#### アプリケーション

## The Abpromise guarantee

**Abpromise保証は、次のテスト済みアプリケーションにおけるab96730の使用に適用されます**

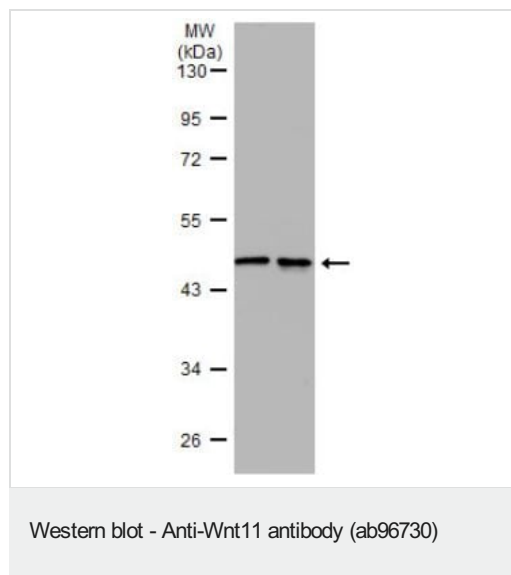
アプリケーションノートには、推奨の開始希釈率がありますが、適切な希釈率につきましてはご検討ください。

アプリケーション	Abreviews	特記事項
WB		1/500 - 1/3000. Predicted molecular weight: 39 kDa.
ICC/IF		1/100 - 1/1000.
IHC-P		1/100 - 1/1000.

## ターゲット情報

<b>機能</b>	Ligand for members of the frizzled family of seven transmembrane receptors. Probable developmental protein. May be a signaling molecule which affects the development of discrete regions of tissues. Is likely to signal over only few cell diameters.
<b>組織特異性</b>	Expressed in fetal lung, kidney, adult heart, liver, skeletal muscle, and pancreas.
<b>配列類似性</b>	Belongs to the Wnt family.
<b>翻訳後修飾</b>	Palmitoylation at Ser-215 is required for efficient binding to frizzled receptors. Palmitoylation is necessary for proper trafficking to cell surface.
<b>細胞内局在</b>	Secreted, extracellular space, extracellular matrix.

## 画像



**All lanes** : Anti-Wnt11 antibody (ab96730) at 1/1000 dilution

**Lane 1** : HEK-293T (human epithelial cell line from embryonic kidney transformed with large T antigen) whole cell lysate

**Lane 2** : A431 (human epidermoid carcinoma cell line) whole cell lysate

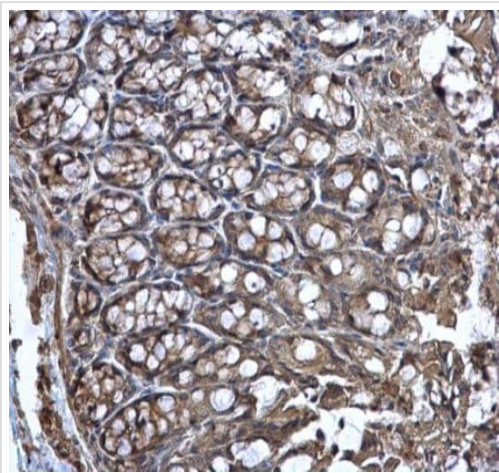
Lysates/proteins at 30 µg per lane.

### Secondary

**All lanes** : HRP-conjugated anti-rabbit IgG antibody

**Predicted band size:** 39 kDa

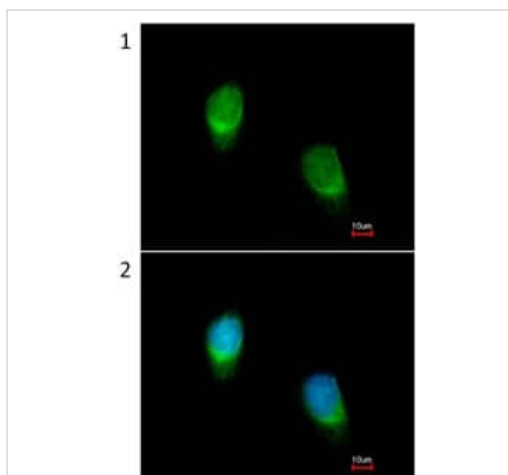
10% SDS-PAGE



Immunohistochemistry (Formalin/PFA-fixed paraffin-embedded sections) - Anti-Wnt11 antibody (ab96730)

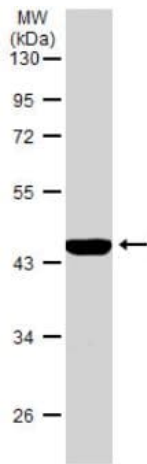
Paraffin-embedded mouse colon tissue stained Wnt11 using ab96730 at 1/500 dilution.

Antigen Retrieval: EDTA based buffer, pH 8.0, 15min



Immunocytochemistry/ Immunofluorescence - Anti-Wnt11 antibody (ab96730)

Immunofluorescence analysis of paraformaldehyde-fixed HeLa (human epithelial cell line from cervix adenocarcinoma) cells labelling Wnt11 (green) using ab96730 at 1/200 dilution. Lower image merged with DNA probe.



Western blot - Anti-Wnt11 antibody (ab96730)

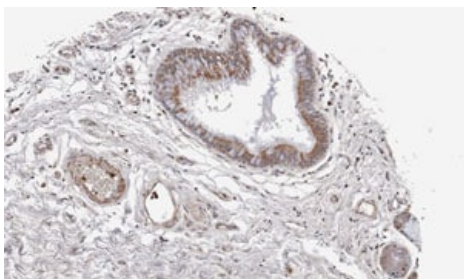
Anti-Wnt11 antibody (ab96730) at 1/1000 dilution + Mouse heart tissue extract at 30  $\mu$ g

**Secondary**

HRP-conjugated anti-rabbit IgG antibody

**Predicted band size:** 39 kDa

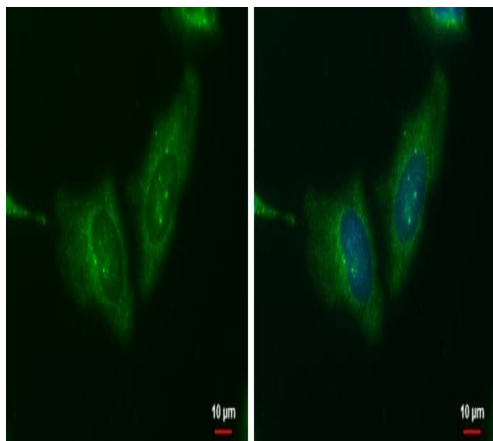
10% SDS-PAGE



Immunohistochemistry (Formalin/PFA-fixed paraffin-embedded sections) - Anti-Wnt11 antibody (ab96730)

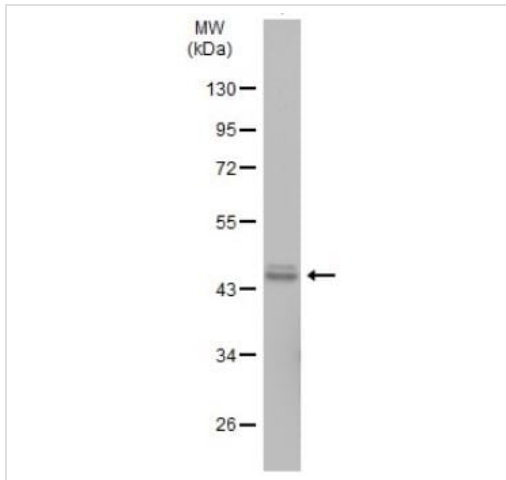
Paraffin-embedded lung SCC xenograft stained Wnt11 using ab96730 at 1/100 dilution.

Antigen Retrieval: EDTA based buffer, pH 8.0, 15min.



Immunocytochemistry/ Immunofluorescence - Anti-Wnt11 antibody (ab96730)

Immunofluorescence analysis of ice-cold MeOH-fixed (5 min) HeLa (human epithelial cell line from cervix adenocarcinoma) cells labelling Wnt11 (green) at cytoplasm using ab96730 at 1/500 dilution. Blue: Hoechst 33342 staining. Scale bar = 10  $\mu$ m.



Western blot - Anti-Wnt11 antibody (ab96730)

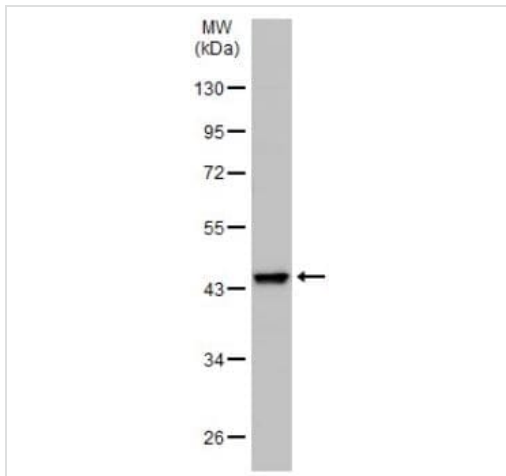
Anti-Wnt11 antibody (ab96730) at 1/1000 dilution + Mouse white adipose tissue extract at 50  $\mu$ g

**Secondary**

HRP-conjugated anti-rabbit IgG antibody

**Predicted band size:** 39 kDa

10% SDS-PAGE



Western blot - Anti-Wnt11 antibody (ab96730)

Anti-Wnt11 antibody (ab96730) at 1/1000 dilution + COLO 205 (human colon adenocarcinoma cell line) whole cell lysate at 30  $\mu$ g

**Secondary**

HRP-conjugated anti-rabbit IgG antibody

**Predicted band size:** 39 kDa

10% SDS-PAGE

**Please note:** All products are "FOR RESEARCH USE ONLY. NOT FOR USE IN DIAGNOSTIC PROCEDURES"

**Our Abpromise to you: Quality guaranteed and expert technical support**

- Replacement or refund for products not performing as stated on the datasheet
- Valid for 12 months from date of delivery
- Response to your inquiry within 24 hours
- We provide support in Chinese, English, French, German, Japanese and Spanish
- Extensive multi-media technical resources to help you
- We investigate all quality concerns to ensure our products perform to the highest standards

If the product does not perform as described on this datasheet, we will offer a refund or replacement. For full details of the Abpromise, please visit <https://www.abcam.co.jp/abpromise> or contact our technical team.

## **Terms and conditions**

---

- Guarantee only valid for products bought direct from Abcam or one of our authorized distributors