



Anti-WISP2 antibody ab123375

画像数 1

製品の概要

製品名	Anti-WISP2 antibody
製品の詳細	Rabbit polyclonal to WISP2
由来種	Rabbit
アプリケーション	適用あり: WB
種交差性	交差種: Human
免疫原	Synthetic peptide: GRSPQ , corresponding to a region around amino acids 242-246 of Human WISP2 (O76076).  Run BLAST with  Run BLAST with
ポジティブ・コントロール	A549 and A431 cell extracts
特記事項	<p>The Life Science industry has been in the grips of a reproducibility crisis for a number of years. Abcam is leading the way in addressing this with our range of recombinant monoclonal antibodies and knockout edited cell lines for gold-standard validation. Please check that this product meets your needs before purchasing.</p> <p>If you have any questions, special requirements or concerns, please send us an inquiry and/or contact our Support team ahead of purchase. Recommended alternatives for this product can be found below, along with publications, customer reviews and Q&As</p>

製品の特性

製品の状態	Liquid
保存方法	Shipped at 4°C. Store at -20°C. Stable for 12 months at -20°C.
バッファー	pH: 7.40 Preservative: 0.02% Sodium azide Constituents: 49% PBS, 50% Glycerol (glycerin, glycerine), 0.88% Sodium chloride (without Mg ²⁺ and Ca ²⁺)
精製度	Immunogen affinity purified
ポリ/モノ	ポリクローナル
アイソタイプ	IgG

アプリケーション

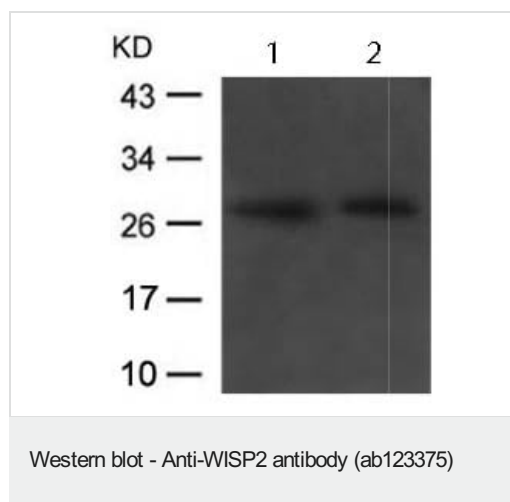
The Abpromise guarantee **Abpromise保証は、**次のテスト済みアプリケーションにおけるab123375の使用に適用されます
アプリケーションノートには、推奨の開始希釈率がありますが、適切な希釈率につきましてはご検討ください。

アプリケーション	Abreviews	特記事項
WB		1/500 - 1/1000. Detects a band of approximately 27 kDa (predicted molecular weight: 27 kDa). Incubate membrane with diluted antibody in 5% nonfat milk, 1X TBS, 0.1% Tween-20 at 4°C with gentle shaking over night.

ターゲット情報

機能	May play an important role in modulating bone turnover. Promotes the adhesion of osteoblast cells and inhibits the binding of fibrinogen to integrin receptors. In addition, inhibits osteocalcin production.
組織特異性	Expressed in primary osteoblasts, fibroblasts, ovary, testes, and heart.
配列類似性	Belongs to the CCN family. Contains 1 IGFBP N-terminal domain. Contains 1 TSP type-1 domain. Contains 1 VWFC domain.
細胞内局在	Secreted.

画像



All lanes : Anti-WISP2 antibody (ab123375) at 1/500 dilution

Lane 1 : A549 cell extract

Lane 2 : A431 cell extract

Predicted band size: 27 kDa

Please note: All products are "FOR RESEARCH USE ONLY. NOT FOR USE IN DIAGNOSTIC PROCEDURES"

Our Abpromise to you: Quality guaranteed and expert technical support

- Replacement or refund for products not performing as stated on the datasheet
- Valid for 12 months from date of delivery

- Response to your inquiry within 24 hours
- We provide support in Chinese, English, French, German, Japanese and Spanish
- Extensive multi-media technical resources to help you
- We investigate all quality concerns to ensure our products perform to the highest standards

If the product does not perform as described on this datasheet, we will offer a refund or replacement. For full details of the Abpromise, please visit <https://www.abcam.co.jp/abpromise> or contact our technical team.

Terms and conditions

- Guarantee only valid for products bought direct from Abcam or one of our authorized distributors