

### Anti-WIF1 antibody [EPR9385] ab155101

リコンビナント **RabMAb**

★★★★★ **2 Abreviews** **16 References** 画像数 7

#### 製品の概要

製品名	Anti-WIF1 antibody [EPR9385]
製品の詳細	Rabbit monoclonal [EPR9385] to WIF1
由来種	Rabbit
アプリケーション	<b>適用あり:</b> WB, IP <b>適用なし:</b> ICC/IF
種交差性	<b>交差種:</b> Mouse, Rat, Human
免疫原	Synthetic peptide within Human WIF1. The exact sequence is proprietary. (Peptide available as <b>ab171766</b> )
ポジティブ・コントロール	WB: HT29 and HeLa whole cell lysate ( <b>ab150035</b> ), human fetal heart and fetal lung tissue lysates, mouse and rat heart tissue lysates. IP: Human fetal lung tissue lysate.
特記事項	This product is a recombinant monoclonal antibody, which offers several advantages including: <ul style="list-style-type: none"> <li>- High batch-to-batch consistency and reproducibility</li> <li>- Improved sensitivity and specificity</li> <li>- Long-term security of supply</li> <li>- Animal-free production</li> </ul> For more information <b>see here</b> . Our RabMAb <sup>®</sup> technology is a patented hybridoma-based technology for making rabbit monoclonal antibodies. For details on our patents, please refer to <b>RabMAb<sup>®</sup> patents</b> .

#### 製品の特性

製品の状態	Liquid
保存方法	Shipped at 4°C. Store at +4°C short term (1-2 weeks). Upon delivery aliquot. Store at -20°C. Stable for 12 months at -20°C.
バッファー	Preservative: 0.01% Sodium azide Constituents: 40% Glycerol (glycerin, glycerine), 0.05% BSA, 59% PBS
精製度	Protein A purified
ポリ/モノ	モノクローナル
クローン名	EPR9385

アイソタイプIgG

アプリケーション

The Abpromise guarantee **Abpromise保証は、次のテスト済みアプリケーションにおけるab155101の使用に適用されます**  
アプリケーションノートには、推奨の開始希釈率がありますが、適切な希釈率につきましてはご検討ください。

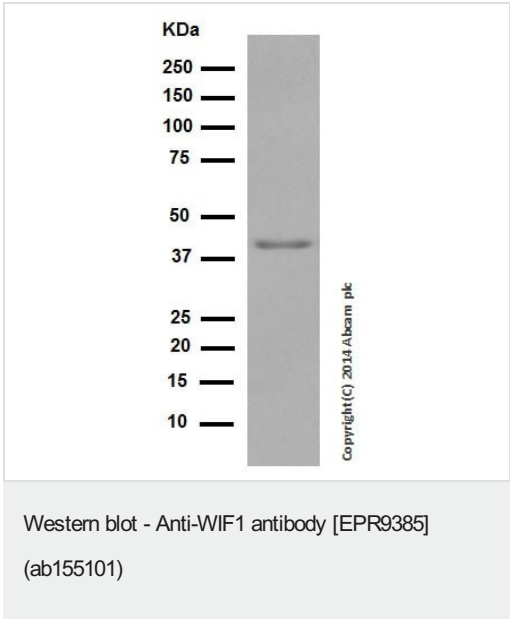
アプリケーション	Abreviews	特記事項
WB	★★★★★ (1)	1/2000. Predicted molecular weight: 41 kDa.Can be blocked with <b>Human WIF1 peptide (ab171766)</b> . <b>For unpurified use at 1/1000 - 1/10000.</b>
IP		1/60. <b>For unpurified use at 1/10 - 1/100.</b>

追加情報Is unsuitable for ICC/IF.

ターゲット情報

機能	Binds to WNT proteins and inhibits their activities. May be involved in mesoderm segmentation.
配列類似性	Contains 5 EGF-like domains. Contains 1 WIF domain.
細胞内局在	Secreted.

画像

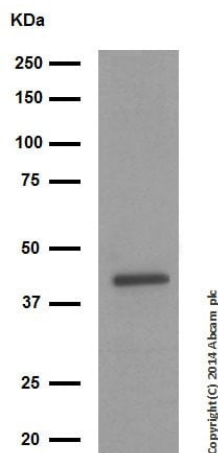


Anti-WIF1 antibody [EPR9385] (ab155101) at 1/2000 dilution  
(purified) + Human fetal heart tissue lysate at 20 µg

**Secondary**  
Goat Anti-Rabbit IgG, (H+L), Peroxidase conjugated at 1/1000 dilution

**Predicted band size:** 41 kDa  
**Observed band size:** 41 kDa

Blocking and diluting buffer: 5% NFDM/TBST.



Western blot - Anti-WIF1 antibody [EPR9385]  
(ab155101)

Anti-WIF1 antibody [EPR9385] (ab155101) at 1/5000 dilution  
(purified) + Human fetal lung tissue lysate at 10 µg

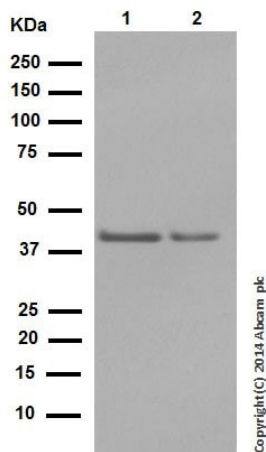
#### Secondary

Goat Anti-Rabbit IgG, (H+L), Peroxidase conjugated at 1/1000  
dilution

**Predicted band size:** 41 kDa

**Observed band size:** 41 kDa

Blocking and diluting buffer: 5% NFDM/TBST.



Western blot - Anti-WIF1 antibody [EPR9385]  
(ab155101)

**All lanes :** Anti-WIF1 antibody [EPR9385] (ab155101) at 1/1000  
dilution (purified)

**Lane 1 :** Mouse heart tissue lysate

**Lane 2 :** Rat heart tissue lysate

Lysates/proteins at 20 µg per lane.

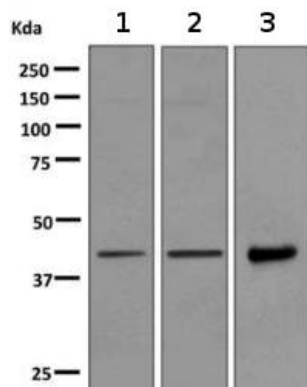
#### Secondary

**All lanes :** Goat Anti-Rabbit IgG, (H+L), Peroxidase conjugated at  
1/1000 dilution

**Predicted band size:** 41 kDa

**Observed band size:** 41 kDa

Blocking and diluting buffer: 5% NFDM/TBST.



Western blot - Anti-WIF1 antibody [EPR9385]  
(ab155101)

**All lanes :** Anti-WIF1 antibody [EPR9385] (ab155101) at 1/1000 dilution (unpurified)

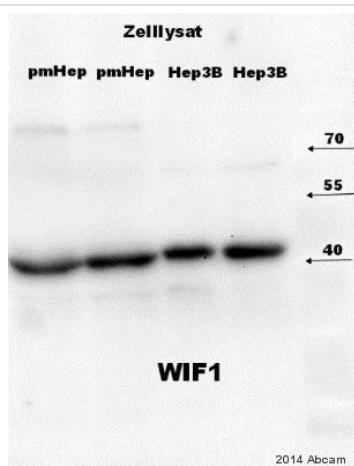
**Lane 1 :** HT29 cell lysate

**Lane 2 :** HeLa cell lysate

**Lane 3 :** Human fetal lung tissue lysate

Lysates/proteins at 10 µg per lane.

**Predicted band size:** 41 kDa



Western blot - Anti-WIF1 antibody [EPR9385]  
(ab155101)

This image is courtesy of an anonymous Abreview

**All lanes :** Anti-WIF1 antibody [EPR9385] (ab155101) at 1/1000 dilution (unpurified)

**Lanes 1-2 :** pmHep3B whole cell lysate

**Lanes 3-4 :** Hep3B whole cell lysate

Lysates/proteins at 30 µg per lane.

#### Secondary

**All lanes :** Alkaline Phosphatase conjugated goat anti-rabbit IgG polyclonal at 1/15000 dilution

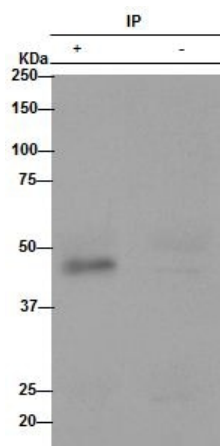
Developed using the ECL technique.

Performed under non-reducing conditions.

**Predicted band size:** 41 kDa

**Observed band size:** 41 kDa

**Exposure time:** 1 minute



Immunoprecipitation - Anti-WIF1 antibody  
[EPR9385] (ab155101)

Purified ab155101 (1/60) immunoprecipitating WIF1 in human fetal lung whole cell lysate (Lane +). For western blotting an Anti-Rabbit IgG (HRP), specific to the non-reduced form of IgG (1/500) was used as the secondary antibody.

Lane (-): Rabbit monoclonal IgG (**ab172730**) instead of ab155101 in Human fetal lung whole cell lysate.

Blocking and diluting buffer: 5% NFDM/TBST.

#### Why choose a recombinant antibody?



**Research with confidence**  
Consistent and reproducible results



**Long-term and scalable supply**  
Recombinant technology



**Success from the first experiment**  
Confirmed specificity



**Ethical standards compliant**  
Animal-free production

Anti-WIF1 antibody [EPR9385] (ab155101)

**Please note:** All products are "FOR RESEARCH USE ONLY. NOT FOR USE IN DIAGNOSTIC PROCEDURES"

#### Our Abpromise to you: Quality guaranteed and expert technical support

- Replacement or refund for products not performing as stated on the datasheet
- Valid for 12 months from date of delivery
- Response to your inquiry within 24 hours
- We provide support in Chinese, English, French, German, Japanese and Spanish
- Extensive multi-media technical resources to help you
- We investigate all quality concerns to ensure our products perform to the highest standards

If the product does not perform as described on this datasheet, we will offer a refund or replacement. For full details of the Abpromise, please visit <https://www.abcam.co.jp/abpromise> or contact our technical team.

## Terms and conditions

---

- Guarantee only valid for products bought direct from Abcam or one of our authorized distributors