


### Anti-WHSC1/NSD2 antibody [29D1] ab75359

★★★★★ **4 Abreviews**   **33 References**   画像数 4

#### 製品の概要

|              |   |
|--------------|---|
| 製品名          | Anti-WHSC1/NSD2 antibody [29D1]   |
| 製品の詳細        | Mouse monoclonal [29D1] to WHSC1/NSD2   |
| 由来種          | Mouse   |
| アプリケーション     | <b>適用あり:</b> WB, IP, IHC-P  |
| 種交差性         | <b>交差種:</b> Human<br><b>交差が予測される動物種:</b> Mouse   |
| 免疫原          | Recombinant fragment. This information is proprietary to Abcam and/or its suppliers.  |
| ポジティブ・コントロール | IHC-P: Human normal testis tissue. WB: HeLa and SHSY5Y whole cell lysates. IP: HepG2 cell lysate.   |
| 特記事項         | <p>This antibody clone is manufactured by Abcam. If you require a custom buffer formulation or conjugation for your experiments, please contact <a href="mailto:orders@abcam.com">orders@abcam.com</a>.</p> <p>The Life Science industry has been in the grips of a reproducibility crisis for a number of years. Abcam is leading the way in addressing this with our range of recombinant monoclonal antibodies and knockout edited cell lines for gold-standard validation. Please check that this product meets your needs before purchasing.</p> <p>If you have any questions, special requirements or concerns, please send us an inquiry and/or contact our Support team ahead of purchase. Recommended alternatives for this product can be found below, along with publications, customer reviews and Q&amp;As</p> |

#### 製品の特性

|       |  |
|-------|--|
| 製品の状態 | Liquid   |
| 保存方法  | Shipped at 4°C. Store at +4°C short term (1-2 weeks). Upon delivery aliquot. Store at -20°C or -80°C. Avoid freeze / thaw cycle.   |
| バッファー | <p>pH: 7.40</p> <p>Preservative: 0.02% Sodium azide</p> <p>Constituents: PBS, 6.97% L-Arginine</p> <p>Some batches contain 0.4M arginine. Please contact Scientific Support for further information.</p> |
| 精製度   | Protein G purified   |

|        |         |
|--------|---------|
| ポリ/モノ  | モノクローナル |
| クローン名  | 29D1    |
| アイソタイプ | IgG2b   |
| 軽鎖の種類  | kappa   |

## アプリケーション

The Abpromise guarantee Abpromise保証は、次のテスト済みアプリケーションにおけるab75359の使用に適用されます

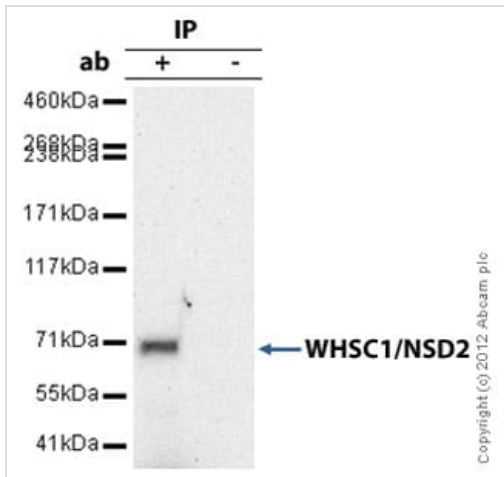
アプリケーションノートには、推奨の開始希釈率がありますが、適切な希釈率につきましてはご検討ください。

| アプリケーション | Abreviews | 特記事項   |
|----------|-----------|--|
| WB       | ★★★★★ (3) | Use a concentration of 5 µg/ml. Detects a band of approximately 80 kDa (predicted molecular weight: 152 kDa).                                  |
| IP       |           | Use at an assay dependent concentration.   |
| IHC-P    |           | Use a concentration of 5 µg/ml. Perform heat mediated antigen retrieval with citrate buffer pH 6 before commencing with IHC staining protocol. |

## ターゲット情報

|       |  |
|-------|--|
| 機能    | Probable histone methyltransferase (By similarity). May act as a transcription regulator that binds DNA and suppresses IL5 transcription.  |
| 組織特異性 | Widely expressed.  |
| 関連疾患  | Note=A chromosomal aberration involving WHSC1 is a cause of multiple myeloma tumors. Translocation t(4;14)(p16.3;q32.3) with IgH.<br>Note=WHSC1 is located in the Wolf-Hirschhorn syndrome (WHS) critical region. WHS results from by sub-telomeric deletions in the short arm of chromosome 4. WHSC1 is deleted in every case, however deletion of linked genes contributes to both the severity of the core characteristics and the presence of the additional syndromic problems. |
| 配列類似性 | Belongs to the histone-lysine methyltransferase family. SET2 subfamily.<br>Contains 1 AWS domain.<br>Contains 1 HMG box DNA-binding domain.<br>Contains 4 PHD-type zinc fingers.<br>Contains 1 post-SET domain.<br>Contains 2 PWWP domains.<br>Contains 1 SET domain.  |
| 翻訳後修飾 | Phosphorylated upon DNA damage, probably by ATM or ATR.  |
| 細胞内局在 | Cytoplasm and Nucleus. Chromosome.   |

## 画像



Immunoprecipitation - Anti-WHSC1/NSD2 antibody  
[29D1] (ab75359)

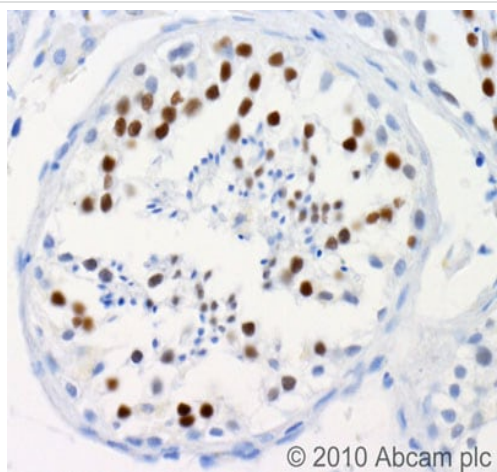
WHSC1/NSD2 was immunoprecipitated using 0.5mg HepG2 whole cell extract, 10µg of Mouse monoclonal to WHSC1/NSD2 and 50µl of protein G magnetic beads (+). No antibody was added to the control (-).

The antibody was incubated under agitation with Protein G beads for 10min, HepG2 whole cell extract lysate diluted in RIPA buffer was added to each sample and incubated for a further 10min under agitation.

Proteins were eluted by addition of 40µl SDS loading buffer and incubated for 10min at 70°C; 10µl of each sample was separated on a SDS PAGE gel, transferred to a nitrocellulose membrane, blocked with 5% BSA and probed with ab75359.

Secondary: Goat polyclonal to mouse IgG light chain specific (HRP) at 1/5000 dilution.

Band: 71kDa: WHSC1/NSD2.



Immunohistochemistry (Formalin/PFA-fixed paraffin-embedded sections) - Anti-WHSC1/NSD2 antibody  
[29D1] (ab75359)

ab75359 (1µg/ml) staining WHSC in human testis using an automated system (DAKO Autostainer Plus). Using this protocol there is strong nuclear staining.

Sections were rehydrated and antigen retrieved with the Dako 3 in 1 AR buffer citrate pH6.1/ in a DAKO PT link. Slides were peroxidase blocked in 3% H<sub>2</sub>O<sub>2</sub> in methanol for 10 mins. They were then blocked with Dako Protein block for 10 minutes (containing casein 0.25% in PBS) then incubated with primary antibody for 20 min and detected with Dako envision flex amplification kit for 30 minutes. Colorimetric detection was completed with Diaminobenzidine for 5 minutes. Slides were counterstained with Haematoxylin and coverslipped under DePeX.

Please note that, for manual staining, optimization of primary antibody concentration and incubation time is recommended.

Signal amplification may be required.



Western blot - Anti-WHSC1/NSD2 antibody [29D1] (ab75359)  
Image courtesy of an anonymous Abreview.

**All lanes :** Anti-WHSC1/NSD2 antibody [29D1] (ab75359) at 1/5000 dilution

**Lane 1 :** Whole cell lysate prepared from HeLa cells

**Lane 2 :** Whole cell lysate prepared from HCT116 cells

Lysates/proteins at 50 µg per lane.

#### Secondary

**All lanes :** HRP conjugated goat anti-mouse polyclonal at 1/10000 dilution

Developed using the ECL technique.

Performed under reducing conditions.

**Predicted band size:** 152 kDa

**Exposure time:** 3 minutes

Blocked with 5% milk for 1 hour at 23°C.



Western blot - Anti-WHSC1/NSD2 antibody [29D1] (ab75359)

**All lanes :** Anti-WHSC1/NSD2 antibody [29D1] (ab75359) at 5 µg/ml

**All lanes :** HeLa (Human epithelial carcinoma cell line) Whole Cell Lysate

Lysates/proteins at 20 µg per lane.

#### Secondary

**All lanes :** Goat Anti-Mouse IgG H&L (HRP) preadsorbed (**ab97040**) at 1/5000 dilution

Performed under reducing conditions.

**Predicted band size:** 152 kDa

**Observed band size:** 180,80 kDa

**Exposure time:** 20 minutes

The full-length MMSET-II protein has an apparent molecular weight of approximately 180 kDa, whereas the 645 amino acid long MMSET-I exhibits a mobility of approximately 80 kDa.

Abcam recommends blocking with 1% milk.

**Please note:** All products are "FOR RESEARCH USE ONLY. NOT FOR USE IN DIAGNOSTIC PROCEDURES"

### **Our Abpromise to you: Quality guaranteed and expert technical support**

---

- Replacement or refund for products not performing as stated on the datasheet
- Valid for 12 months from date of delivery
- Response to your inquiry within 24 hours
- We provide support in Chinese, English, French, German, Japanese and Spanish
- Extensive multi-media technical resources to help you
- We investigate all quality concerns to ensure our products perform to the highest standards

If the product does not perform as described on this datasheet, we will offer a refund or replacement. For full details of the Abpromise, please visit <https://www.abcam.co.jp/abpromise> or contact our technical team.

### **Terms and conditions**

---

- Guarantee only valid for products bought direct from Abcam or one of our authorized distributors